



## Disadvantaged Business Enterprises

November 2017 Newsletter

### 2017 New Orleans DBE “Meet & Greet”

Our New Orleans DBE “Meet and Greet” event, held on October 19, 2017, was a huge success with a magnificent turnout. There were approximately 108 attendees, which included DBEs, prime contractors, engineering firms, representatives from LADOTD, Federal Highway Administration, New Orleans Regional Planning Commission, Louisiana Economic Development (LED), Louis Armstrong New Orleans International Airport, and the New Orleans Recovery School District. This event allowed the DBEs a face-to-face opportunity to connect with the prime contractors and business leaders to market their company and services for future business projects, as well as obtain some outstanding information about valuable resources obtainable through Louisiana Economic Development.

We encourage all DBEs to follow up with every firm they had a chance to communicate with. In conjunction with the DBEs following up, SJB will be available to assist DBEs with:

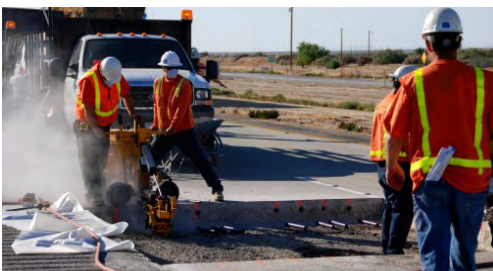
- Facilitating further communications with the prime contractors or other agencies
- Providing additional training or seminars that would be beneficial to your success
- Creating and or improving your marketing material

SJB will also be hosting additional business functions in the future, so please be sure to check your emails so that you can plan accordingly. We truly appreciate everyone’s positive feedback and hope that we can continue to provide this service to each and every one of you. It is truly our pleasure to work with you!



**Contact:**

LADOTD Compliance Office  
1201 Capitol Access Road  
Baton Rouge, LA 70802  
(225) 379-1382



#### In This Issue

- Page 12 DBE Survey
- Page 13 LED Small Business Resources
- Page 14 LED CEO Roundtables
- Page 15 DBE Safety Article
- Page 16 Events/Workshops
- Page 18 DBE Meetings

- Page 19 LADOTD Lettings
- Page 23 LADOTD Letting Results
- Page 28 Business Report Article
- Page 29 Featured DBE
- Page 30 LADOTD Contact Information
- Page 30 SJB Group DBE Supportive Services











































Dear DBE Firm:

The Disadvantaged Business Enterprise (DBE) Program is designed to ensure that small minority and women-owned businesses are able to compete on an equal basis for contracting opportunities within the transportation industry.

Please take a few moments to complete the survey below in order to properly identify areas of concern. Your assistance will aid in creating common solutions and increase contracting opportunities for all. **Please circle the areas of assistance you are interested in being provided.**

Business Name: \_\_\_\_\_

Business Address: \_\_\_\_\_

Business Email: \_\_\_\_\_

Business Phone No.: \_\_\_\_\_ Specialty Areas: \_\_\_\_\_

Do you actively quote LADOTD projects? Yes  No

If not, why? \_\_\_\_\_

Do you bid primarily as a: prime contractor  or sub-contractor

Are you interested in becoming a prime contractor? Yes  No

Have you ever received a LADOTD job? Yes  No

Do you plan to actively bid LADOTD work in the future? Yes  No

If not, why: \_\_\_\_\_

Are there any barriers you see to quoting LADOTD jobs? Yes  No

If yes, please explain: \_\_\_\_\_

If barriers listed, what do you see as ways to overcome those barriers?

**Accounting & Record Keeping**

- Financial Analysis
- Accounting Software

**Financial Assistance**

- Cash Flow/Working Capital

**Business Management**

- Business Planning

**Marketing**

- Marketing Strategies
- Marketing Plan

**Contract Compliance**

- Federal/State Compliance

**Job Cost Control**

- Preparing Budgets
- Actual Cost Reports

**Scheduling & Planning**

- Plans & Specs
- Project Scheduling
- Labor/Bar Chart
- Material Delivery
- Estimating/Bidding

**Legal**

- Contract Negotiations
- Delay Contract
- Construction Lien Law

**Contract Compliance**

- Hardware/Software

**Please complete and return to SJB Group, LLC**

**Email: [jackie.desbordes@sjbgroup.com](mailto:jackie.desbordes@sjbgroup.com)**

**Mail: P.O. Box 1751, Baton Rouge, LA 70821-1751**

**Fax: 225-769-3596**



## Small Business Resources available through Louisiana Economic Development

The [Small and Emerging Business Development Program](#) provides managerial and technical training and one-on-one assistance to help small businesses sustain and grow.

The [Louisiana Contractors Accreditation Institute](#) is a six week course that offers small and emerging construction businesses critical information about construction management and assists with preparing for the business and law portion of the contractors licensing exam.

The [Bonding Assistance Program](#) provides guarantees for bid, payment and performance bonds at reasonable rates that mitigate risk for the surety company and help small businesses build or expand their bonding capacity.

The [Hudson Initiative](#) provides a small business certification that expands opportunities with State contracts and procurement.

The [Veteran Initiative](#) provides a veteran owned and service connected disabled veteran owned small business certification that expands opportunities with State contracts and procurement.

[Economic Gardening](#) connects growth companies to a team of highly skilled research specialists that provide customized information to address a company's specific growth challenges in areas including market research, geographic information systems, and digital marketing.

[CEO Roundtables](#) bring together key decision makers from growth companies 10 times over the course of a year for collaborative, growth-oriented roundtable sessions that support a trusting environment in which they can safely explore business and personal issues with the guidance of experienced facilitators.

[Louisiana Business Connection](#) is a portal designed to connect major business projects with disadvantaged business enterprises, minority-owned businesses, woman-owned businesses, veteran-owned businesses, and the other small businesses of Louisiana to promote growth and inclusiveness in the state. – Large and small businesses operating in Louisiana may register at no cost and discover contract opportunities.

**You can visit the highlighted links by pressing “Control” on your keypad and clicking on the link.**

**If you would like more information about each programs please feel free to contact Ms. Stephanie Hartman, the LED Small Business Services Manager, at (225) 342-5677 or [Stephanie.Hartman@la.gov](mailto:Stephanie.Hartman@la.gov)**



# LED Launches Roundtables For Small Businesses Across Louisiana

*Yearlong program builds on success of CEO Roundtables to provide peer learning for small businesses*

BATON ROUGE, La. — Leveraging the success of its CEO Roundtables for fast-growing firms, Louisiana Economic Development has launched Small and Emerging Business Development Roundtables in eight cities throughout the state. Each roundtable brings together 10 to 15 owners of small and emerging businesses for a yearlong dialogue. They share challenges and learn from the experiences of their peers. They meet 10 times to provide business owners with the opportunity to get just-in-time answers to pressing issues within a safe environment in which sensitive business challenges are processed with peers.

Sessions for the innovative peer-to-peer learning program began this summer in Alexandria, Baton Rouge, Covington, Gonzales, Lafayette, Lake Charles, New Orleans and Shreveport. Participants are selected from Louisiana companies that have been certified by LED's Small and Emerging Business Development Program. The SEBD Program provides managerial and technical assistance that helps sustain and grow small businesses.

"This is a great example of a collaborative effort to nurture Louisiana's small business community," LED Secretary Don Pierson said. "Through the SEBD Roundtables, participants learn that they are not alone and can help one another by sharing experiences and solutions. Peer-to-peer views can be very helpful in improving their businesses. It is vital that we provide support for these businesses so that they can provide sustainable growth and employment well into the future."

The roundtable experience is designed to help small business owners reach better decisions and action plans, affirm what they're doing right, and identify what they need to improve. Participants also develop trusted relationships to share both business and personal issues. As the roundtables unveil challenges that the companies may be facing, the SEBD Program addresses those needs through managerial and technical assistance that allows small business owners to access continued support to help enhance their business knowledge and capacity.

The peer-to-peer learning program uses the national best-practice PeerSpectives™ Roundtable System developed by the Edward Lowe Foundation. Earlier this year, LED hosted the national best-practice PeerSpectives training with support of the foundation. The event certified service-providers representing eight regions of the state in PeerSpectives protocols. Certification ensures that peer-to-peer roundtables deliver a consistent experience in the small business community. LED is now licensed by the Edward Lowe Foundation to use the PeerSpectives Roundtable System for SEBD Roundtables.

In collaboration with SEBD Intermediaries, a network of LED's regional small business partners, the SEBD Roundtables are offered in multiple locations throughout Louisiana including:

Business and Community Development Center — Southern University, Shreveport.

City of Alexandria and Ministers of Economic Development, Alexandria.

Good Work Network, New Orleans.

Louisiana Technology Park, Baton Rouge.

Microbusiness Enterprise Corporation of Ascension, Gonzales.

Small Business Development and Management Institute — Southern University, New Orleans.

Small Business Development Center — Southeastern Louisiana University, Hammond.

Southwest Louisiana Partnership for Economic Development, Lake Charles.

TruFund, Baton Rouge.

Small Business Development Center — University of Louisiana Lafayette, Lafayette.

Any SEBD Intermediary can be contacted about enrollment for the next SEBD Roundtables sessions, beginning in the summer of 2018. For more information on the application process contact Stephanie Hartman, LED Small Business Services manager, at [stephanie.hartman@la.gov](mailto:stephanie.hartman@la.gov) or 225.342.5677; or contact Tatiana Bruce, lead Business Development officer, at [tatiana.bruce@la.gov](mailto:tatiana.bruce@la.gov) or 225.342.5663.





# FOUR MAJOR “MUST HAVES” IN CONSTRUCTION

By: [Ron Parker STS,CHST](#)

Although there are many things in construction you need to keep you from possible injury or death, I feel there are four “must haves”. I will start with:

- **Hard hats**—Prevention of head injuries is important in every safety program. How does a hard hat provide protection? It can shield your head (scalp), face, neck and shoulders from a falling object, splashes, spills and drips. A rigid shell can resist blows to the head. The suspension system inside the hat acts as a shock absorber. The right hard hat can serve as an insulator against electrical shock. Some hard hats can be fitted with face shields, goggles and hoods. A survey conducted by the Bureau of Labor Statistics noted that most who suffered head injuries were not wearing head protection. Employers have a “Duty of Care” to ensure the health and safety of employees.
- **Safety glasses**—Why is it important to wear safety glasses? According to a survey 800,000 work related injuries to eyes occur each year. From 10% to 20% of these injuries cause temporary or permanent damage. It is believed that up to 90% of these injuries can be prevented by wearing safety glasses. Safety glasses come in many different styles, physical makeup and usage. It is important you use the safety glasses you need for the task you are performing. It is equally important to choose glasses that fit properly and are comfortable to wear.
- **Safety boots** (preferably steel toe boots)—In construction many people question whether or not to wear safety boots. Many think safety boots can be uncomfortable and that the steel toe will not allow for good air circulation. Safety is the main reason why people wear these boots. Most construction sites will not let you enter the site much less work there unless you are wearing steel toe boots. By wearing these boots you resist the possibility of being exposed to unnecessary hazards. If something heavy was to fall on your feet, or your feet should come into contact with sharp objects, steel toe boots can help to prevent injuries. Safety boots will also protect your ankles should you step in a hole or onto an uneven surface. When it comes to choosing comfort over safety, safety should always win.
- **Gloves**—While performing a task that has the possibility to produce injuries to any portion of the hand, protective PPE should be used. In certain circumstances, there are exceptions to this. Some tasks where gloves can be caught in a tool or machinery and can be determined to have more of a chance to injure the hands, gloves should not be used. This should be discussed with the on site safety professional prior to proceeding. For further information on gloves to protect your hands, refer to 29 CFR part 1910.138

This article was brought to you by: [Warriors4Safety.com](#)

Support & Training for Safety Professionals



## Events & Workshops

### EVENTS/WORKSHOPS OFFERED BY THE LOUISIANA SMALL BUSINESS DEVELOPMENT CENTERS:

#### December

##### 2017 Tax Workshop

December 1, 2017

Fri 9:00 AM to 12:00 PM

Topic: Tax Planning

##### LSBDC at McNeese State University: Main Office SEED Center

Fee: \$ 30.00

##### Lunch & Learn with LSBDC: Everyone is in Sales!

December 5, 2017

Tue 11:30 AM to 1:00 PM

##### St. James Parish Courthouse

##### Securing Business Financing in 5 Steps

December 6, 2017

Wed 6:00 PM to 8:00 PM

Topic: Financing and Capital

##### Vacherie Center Vacherie Annex Business Satellite Office

##### Starting & Financing a Small Business

December 13, 2017

Wed 3:00 PM to 5:00 PM

Topic: Start-up Assistance

##### South Regional Library Auditorium

##### Women-Owned Small Business Certification

December 20, 2017

Wed 10:00 AM to 12:00 PM

Topic: Government Contracting

##### Louisiana Technology Park

#### January

##### Boots to Business: From Service to Startup

January 9, 2018

Tue 8:00 AM to 5:00 PM

8 sessions ending Wed, Jan 10

Topic: Start-up Assistance

##### LSBDC Northwest & Central Region - Alexandria Army Alumni and Career Program

##### Starting & Financing a Small Business

January 12, 2018

Fri 10:00 AM to 12:00 PM

Topic: Start-up Assistance

##### Louisiana Technology Park

##### 8(a) Certification

January 17, 2018

Wed 10:00 AM to 12:00 PM

Topic: Government Contracting

##### Louisiana Technology Park



(Events & Workshops Continued)

**Starting and Financing Your Business Idea -  
Hammond**

**January 30, 2018**

**Tue 9:00 AM to 12:00 PM**

Topic: Start-up Assistance

**LSBDC at Southeastern Louisiana University:  
Main Office Southeast Louisiana Business  
Center**

## One-On-One Meeting

**Mr. Danny Cruz and Ms. Esmeralda Valenzuela with D.A.C.P. Construction**

**October 25, 2017**

SJB Group DBE Supportive Staff, Mr. Kenyatta Sparks (DBE Program Assistant), held another fruitful and effective Breakfast Social meeting with Mr. Danny Cruz and Ms. Esmeralda Valenzuela with D.A.C.P. Construction, LLC.

The meeting allowed DBESS the opportunity to provide Mr. Cruz and Ms. Valenzuela with strategical ways to grow their company within the Roads, Bridge, and Highway markets. To assist Mr. Cruz and Ms. Valenzuela in these endeavors, DBESS provided them with a tutorial of how to navigate the LA DOTD website, so that they can locate pertinent information which may be relevant to the type of services they provide while performing on LA DOTD projects. DBESS also recommended that their company add more LA DOTD Work Item Codes to their DBE Certification and obtain their SBE (Small Business Element) Certification, which may open up more opportunities for them to be utilized by the prime contractors to satisfy DBE/SBE Goals on the LA DOTD Projects.

## Tuesday/Thursday Breakfast Social and Discussions

**Mr. Mark Batiste and Ms. Brittney Zanders with Mark's Electric, Inc.**

**October 26, 2017**

SJB Group DBE Supportive Staff, Mr. Kenyatta Sparks (DBE Program Assistant), held another productive and successful Breakfast Social meeting with Mr. Mark Batiste and Ms. Brittney Zanders with Mark's Electric, Inc.

The purpose of the meeting was to provide Mr. Batiste and Ms. Zanders, an established company that provides excellent electric and lighting services, with more tactically ways to grow their company within the DOTD arena. To assist Mr. Batiste and Ms. Zanders with getting started in the right direction, DBESS provided them with a tutorial of how to navigate the LA DOTD website, so that they can have a better understanding of how to locate applicable information about LA DOTD projects that they may be interested in chasing. DBESS also recommended that their company add more LA DOTD Work Item Codes to their DBE Certification, which may open up more opportunities for them to be utilized by the prime contractors to satisfy DBE/SBE Goals on the LA DOTD Projects.

**If you are interested in attending our Breakfast Social Discussion meeting, please call Mr. Sparks at (225) 769-3400. These meetings are held on Tuesdays and Thursdays from 10:30 am to 11:30 am, at the SJB Group Office, 8733 Picardy Avenue, Baton Rouge, Louisiana.**



## Letting of 12/13/2017

For more information on lettings or to download construction documents, visit: <http://wwwapps.dotd.la.gov/engineering/lettings/>

**Proposal: H.010599.6 WELCOME CEMENTERY ROAD BRIDGE OVER MENACE CREEK**

SBE Goal: 8%

Specbook: 2006

ASPHALT PILOT PROJECT: This project has been selected as an Asphalt Pilot Project. Special provisions governing asphalt requirements can be found in the construction proposal section titled 2015 ASPHALT PILOT SPECIAL PROVISION.

Description of work: clearing and grubbing, grading, class ii base course, asphalt concrete pavement, precast concrete piles, concrete slab span bridge, and related work.

Parish(es): Vernon

Federal Number: H010599

Estimated Construction Cost: \$250,000 to \$500,000

Construction Proposal Documents

**Proposal: H.010661.6 N. FLANNERY/ FIREWOOD/ CLOVERLAND BRIDGES**

DBE Goal: 10%

OJT Goal: 1 Trainees

Specbook: 2006

ASPHALT PILOT PROJECT: This project has been selected as an Asphalt Pilot Project. Special provisions governing asphalt requirements can be found in the construction proposal section titled 2015 ASPHALT PILOT SPECIAL PROVISION.

Description of work: clearing and grubbing, removal of bridges, grading, drainage structures, class ii base course, asphalt concrete pavement, precast concrete piles, concrete slab span bridges, and related work.

Parish(es): East Baton Rouge

Federal Number: H010661

Estimated Construction Cost: \$1,000,000 to \$2,500,000

Construction Proposal Documents

**(Lettings Continued)**

**Proposal: H.011239.6 LA 1: LEEVILLE TO GOLDEN MEADOW PHASE 2E**

DBE Goal: 14%

OJT Goal: 4 Trainees

Specbook: 2016

Description of work: drilled shaft foundations, intelligent transportation system, precast concrete piles, precast-prestressed concrete girder spans bridge, and related work.

Parish(es): Lafourche

Route(s): LA 1

Federal Number: H011239

Estimated Construction Cost: \$10,000,000 to \$15,000,000

Construction Proposal Documents

**Proposal: H.011532.6 MOTT LANE BRIDGE / DRAIN TO LAKE IRWIN**

SBE Goal: 12%

Specbook: 2006

Description of work: clearing and grubbing, grading, drainage structures, class ii base course (stone), superpave asphaltic concrete pavement, precast concrete piles, concrete slab span bridge, and related work.

Parish(es): Morehouse

Federal Number: H011532

Estimated Construction Cost: \$250,000 to \$500,000

Construction Proposal Documents

**Proposal: H.011542.6 PELLERIN ROAD BRIDGE/ DELAHOUSSAYE CANAL**

DBE Goal: 8%

Specbook: 2006

Description of work: clearing and grubbing, drainage structures, class ii base course (crushed stone), superpave asphaltic concrete overlay, precast concrete piles, concrete slab span bridge, bridge repairs and related work.

Parish(es): Iberia

Federal Number: H011542

Estimated Construction Cost: \$500,000 to \$1,000,000

Construction Proposal Documents

**Proposal: H.011574.6 LA 1048: ST. HELENA P/L - ROCH ROAD**

DBE Goal: 9%

Specbook: 2016

Description of work: drainage structures, milling asphalt pavement, pavement patching, asphalt concrete overlay, and related work.

Parish(es): Tangipahoa

Route(s): LA 1048

Federal Number: H011574

Estimated Construction Cost: \$500,000 to \$1,000,000

Construction Proposal Documents



**(Lettings Continued)**

**Proposal: H.012228.6 LA 3188: US 61 - I-10**

DBE Goal: 5%

Specbook: 2016

Description of work: milling asphalt pavement, asphalt concrete overlay, pavement patching, traffic signalization, and related work.

Parish(es): St. John the Baptist

Route(s): LA 3188

Federal Number: H012228

Estimated Construction Cost: \$1,000,000 to \$2,500,000

Construction Proposal Documents

**Proposal: H.012399.6 LA 1-X: FOUR LANE TO THREE LANE SECTION**

DBE Goal: 3%

Specbook: 2016

Description of work: pavement patching, milling asphalt pavement, asphalt concrete pavement, and related work.

Parish(es): Natchitoches

Route(s): LA 1-X

Federal Number: H012399

Estimated Construction Cost: \$1,000,000 to \$2,500,000

Construction Proposal Documents

**Proposal: H.012690.6 FERRY BARGE 305-041 DRYDOCK FOR REPAIR**

Specbook: 2016

Description of work: dry docking, steel repairs, painting and related work.

Parish(es): Statewide

Federal Number: H012690

Estimated Construction Cost: \$100,000 to \$250,000

Construction Proposal Documents

**Proposal: H.012703.6 LA 151: LA 33 - LA 823**

OJT Goal: 1 Trainees

Specbook: 2016

Description of work: clearing and grubbing, drainage structures, lime treatment, in-place cement treated base course, milling asphalt pavement, asphalt concrete overlay, and related work.

Parish(es): Lincoln; Union

Route(s): LA 151

Federal Number: H012703

Estimated Construction Cost: \$2,500,000 to \$5,000,000

Construction Proposal Documents

**(Lettings Continued)**

**Proposal: H.012721.6 BREAUX BRIDGE PIT  
SCALE REHAB**

SBE Goal: 10%

Specbook: 2016

Description of work: portland cement concrete  
pavement, weigh scale pit repairs and approach  
slabs

Parish(es): St. Martin

Route(s): I-10

Federal Number: H012721

Estimated Construction Cost: \$250,000 to  
\$500,000

Construction Proposal Documents



# Bid Results for the Letting of 11-8-2017

**The CS-6AAA Form and Attachments for all DBE Goal Projects are due on Tuesday, November 14, 2017, prepared and submitted as provided in the Proposal. Questions regarding the CS6AAA Form and Attachments can be directed to the Compliance Programs Office at 225-379-1382 .**

**H.001146.6 (DBE Goal Project) LA 120: BRIDGES NEAR PROVENCAL**

CLEARING AND GRUBBING, REMOVAL OF TIMBER TRESTLE BRIDGES, GRADING, DRAINAGE STRUCTURES, CLASS II BASE COURSE, LIME TREATMENT, ASPHALT CONCRETE PAVEMENT, PRECAST CONCRETE PILES, PRECAST CONCRETE SLAB SPAN BRIDGES, AND RELATED WORK.

OJT Goal: 2 Trainees

Parish(es): Natchitoches

Route(s): LA 120

Federal Number: H001146

Estimated Construction Cost: \$7,056,512.41

Apparent Low Bidder:

W. E. MCDONALD & SON, LLC.

PO BOX 787

GLENMORA, LA 71433-0787

(318)748-8112

\$5,188,195.89

**H.007275.6 (DBE Goal Project) ST. CHARLES AVENUE (NASHVILLE TO LA AVE)**

GRADING, MILLING ASPHALT PAVEMENT, PAVEMENT PATCHING, CLASS II BASE COURSE, ASPHALT CONCRETE PAVEMENT, LOOP DETECTOR, AND RELATED WORK.

Parish(es): Orleans

Federal Number: H007275

Estimated Construction Cost: \$1,549,739.45

Apparent Low Bidder:

Barriere Construction Co., LLC

PO BOX 1576

BOUTTE, LA 70039

(985)785-7700

\$1,383,658.35

**H.007440.6 (DBE Goal Project) NORTH BOULEVARD PEDESTRIAN IMPROVEMENTS**

DRAINAGE STRUCTURES, CLASS II BASE COURSE, PORTLAND CEMENT CONCRETE PAVEMENT, DRILLED SHAFT FOUNDATIONS, LANDSCAPING; ADDITIVE ALTERNATE 1 (ADDITIONAL STREETSCAPING): BENCHES (PARK); ADDITIVE ALTERNATE 2 (GATEWAY SIGNAGE): SIGN (GATEWAY); AND RELATED WORK.

Parish(es): East Baton Rouge

Federal Number: H007440

Estimated Construction Cost: \$1,804,972.04

Apparent Low Bidder:

Brown Industrial Construction, LLC

727 Highlandia Drive

Baton Rouge, LA 70810

(225)478-1006

\$2,861,482.50

**H.009571.6 (DBE Goal Project) US 61 AND LA 3155: MILL AND OVERLAY**

MILLING ASPHALT CONCRETE, PAVEMENT PATCHING, ASPHALT CONCRETE OVERLAY, HANDICAPPED CURB RAMPS, LOOP DETECTOR, AND RELATED WORK.

Parish(es): Jefferson

Route(s): LA 3155, US 61

Federal Number: H009571

Estimated Construction Cost: \$2,384,930.19

Apparent Low Bidder:

Barber Bros. Contracting Co., L.L.C

115 James Drive West Suite 140

St. Rose, LA 70087

(504)407-2646

\$2,372,178.46

**(Bid Results Continued)**

**H.010039.6 (DBE Goal Project) VERNON-EROS ROAD & ZOAR ROAD BRIDGES**

CLEARING AND GRUBBING, GRADING, DRAINAGE STRUCTURES, CLASS II BASE COURSE, SUPERPAVE ASPHALT CONCRETE OVERLAY, PRECAST CONCRETE PILES, CONCRETE SLAB SPAN BRIDGES, CONCRETE APPROACH SLABS AND RELATED WORK.

Parish(es): Jackson

Federal Number: H010039

Estimated Construction Cost: \$1,319,528.50

Apparent Low Bidder:

Terral Construction L.L.C.

545 PLEASURE ISLAND ROAD

FARMERVILLE, LA 71241

(318)245-9881

\$848,460.53

**H.010376.6 (DBE Goal Project) LA 25: ST. TAMMANY P/L – S. JCT. LA 16**

PRECAST REINFORCED CONCRETE BOX CULVERTS, PAVEMENT PATCHING, MILLING ASPHALT CONCRETE, ASPHALT CONCRETE OVERLAY, AND RELATED WORK.

Parish(es): Washington

Route(s): LA 25

Federal Number: H010376

Estimated Construction Cost: \$3,278,923.10

Apparent Low Bidder:

Barriere Construction Co., LLC.

407 CC ROAD

FRANKLINTON, LA 70438

(985)795-8239

\$2,709,913.60

**H.010608.6 (DBE Goal Project) PLEASANT HILL RD & LAWRENCE CK RD BRDGS**

CLEARING AND GRUBBING, REMOVAL OF TIMBER BRIDGES, GRADING, DRAINAGE STRUCTURES, CLASS II BASE COURSE, ASPHALT CONCRETE PAVEMENT, CONCRETE APPROACH SLABS, PRECAST CONCRETE PILES, CONCRETE SLAB SPAN BRIDGE, CONCRETE GIRDER SPAN BRIDGES, AND RELATED WORK.

OJT Goal: 1 Trainees

Parish(es): Washington

Federal Number: H010608

Estimated Construction Cost: \$2,559,443.50

Apparent Low Bidder:

Guinn Construction, LLC

1616 Industrial Drive

Jennings, LA 70546

(337)824-0630

\$2,583,006.80

**H.010973.6 (DBE Goal Project) VETERANS BLVD LIGHTING (AIRPORT-LOYOLA)**

CLEARING AND GRUBBING, TREATED TIMBER PILES, LIGHTING, AND RELATED WORK.

Parish(es): Jefferson

Federal Number: H010973

Estimated Construction Cost: \$755,536.00

Apparent Low Bidder:

WALTER J. BARNES ELECTRIC CO., INC.

PO BOX 10458

JEFFERSON, LA 70181

(504)835-1756

\$619,293.00



**(Bid Results Continued)**

**H.011573.6 (DBE Goal Project) LA 1061: LA 440 -  
SPRING CREEK BRIDGE**

DRAINAGE STRUCTURES, MILLING ASPHALT PAVEMENT, PAVEMENT PATCHING, THIN ASPHALT CONCRETE, AND RELATED WORK.

OJT Goal: 2 Trainees

Parish(es): Tangipahoa

Route(s): LA 1061

Federal Number: H011573

Estimated Construction Cost: \$611,763.31

Apparent Low Bidder:

Diamond B Construction Co., L.L.C.

PO BOX 7618

ALEXANDRIA, LA 71306

(318)427-1300

\$567,359.83

**H.011617.6 (DBE Goal Project) LA 75 & LA 141-1: CP,  
OVLAY & STAB, OVLAY**

MILLING ASPHALT CONCRETE, DRAINAGE STRUCTURES, LIME TREATMENT, IN-PLACE CEMENT STABILIZED BASE COURSE, ASPHALT SURFACE TREATMENT, PAVEMENT PATCHING, PAVEMENT WIDENING, ASPHALT CONCRETE OVERLAY, AND RELATED WORK.

Parish(es): Iberville

Route(s): LA 141-1, LA 75

Federal Number: H011617

Estimated Construction Cost: \$3,539,650.96

Apparent Low Bidder:

Barber Bros. Contracting Co., L.L.C

PO BOX 66296

BATON ROUGE, LA 70896

(225)355-5611

\$2,572,142.20

**H.011743.6 (DBE Goal Project) 40 OAKS FARM RD  
(ARK RD - STANDARD REED)**

CLEARING AND GRUBBING, REMOVAL OF CONCRETE AND TIMBER BRIDGE, DRAINAGE STRUCTURES, MILLING ASPHALT PAVEMENT, PAVEMENT PATCHING, ASPHALT SURFACE TREATMENT, ASPHALT CONCRETE PAVEMENT, PRECAST CONCRETE BOX CULVERTS, AND RELATED WORK.

Parish(es): Ouachita

Federal Number: H011743

Estimated Construction Cost: \$1,260,495.66

Apparent Low Bidder:

D & J CONSTRUCTION CO., LLC

PO BOX 1889

WEST MONROE, LA 71294

(318)388-2764

\$904,729.20

**H.012098.6 (DBE Goal Project) US 90: N EASTERN  
AVE - LA 3076**

GRADING, DRAINAGE STRUCTURES, LIME TREATMENT, MILLING ASPHALT PAVEMENT, PAVEMENT PATCHING, CLASS II BASE COURSE, PAVEMENT WIDENING, ASPHALT SURFACE TREATMENT, ASPHALT CONCRETE PAVEMENT, TRAFFIC SIGNALIZATION, DRILLED SHAFT FOUNDATIONS, AND RELATED WORK.

OJT Goal: 1 Trainees

Parish(es): Acadia

Route(s): US 90

Federal Number: H012098

Estimated Construction Cost: \$4,104,629.64

Apparent Low Bidder:

Prairie Contractors Inc.

PO BOX 1530

OPELOUSAS, LA 70571-1530

(337)948-3229

\$3,715,866.56

**(Bid Results Continued)**

**H.012404.6 (DBE Goal Project) I-10 OFF RAMPS @ LA 182**

GRADING, DRAINAGE STRUCTURES, PAVEMENT PATCHING, SUBGRADE TREATMENT, CLASS II BASE COURSE, ASPHALT SURFACE TREATMENT, ASPHALT CONCRETE PAVEMENT, PORTLAND CEMENT CONCRETE PAVEMENT, DRILLED SHAFT FOUNDATIONS, TRAFFIC SIGNALIZATION, AND RELATED WORK.

Parish(es): Lafayette

Route(s): I-10

Federal Number: H012404

Estimated Construction Cost: \$994,802.64

Apparent Low Bidder:

Elliott Construction, LLC

PO BOX 366

GRAND COTEAU, LA 70541

(337)662-0035

\$957,012.80

**H.012524.6 (SBE Goal Project) LA 28W @ JOHN ALLISON DR: RIGHT TURN LANE**

GRADING, CLASS II BASE COURSE, DRAINAGE STRUCTURES, ASPHALT CONCRETE PAVEMENT, AND RELATED WORK.

Parish(es): Rapides

Route(s): LA 28

Federal Number: H012524

Estimated Construction Cost: \$242,213.36

Apparent Low Bidder:

Progressive Construction Co., LLC

PO BOX 11594

ALEXANDRIA, LA 71315-1594

(318)473-9522

\$192,914.07

**H.012564.6 (DBE Goal Project) US 61: IMPROVEMENTS @ E HARDING & ORMOND**

GRADING, MILLING ASPHALT CONCRETE, ASPHALT CONCRETE PAVEMENT, LOOP DETECTORS, AND RELATED WORK.

Parish(es): St. Charles

Route(s): US 61

Federal Number: H012564

Estimated Construction Cost: \$548,540.48

Apparent Low Bidder:

Barriere Construction Co., LLC

PO BOX 1576

BOUTTE, LA 70039

(985)785-7700

\$699,743.20

**H.012581.6 (SBE Goal Project) LA 442: E. JCT. LA 441 - PEA RIDGE RD.**

THIN ASPHALTIC CONCRETE OVERLAY, MILLING ASPHALT PAVEMENT, AND RELATED WORK.

Parish(es): Livingston

Route(s): LA 442

Federal Number: H012581

Estimated Construction Cost: \$286,691.57

Apparent Low Bidder:

Diamond B Construction Co., L.L.C.

PO BOX 7618

ALEXANDRIA, LA 71306

(318)427-1300

\$247,848.54

**(Bid Results Continued)**

**H.012592.6 LA 24: EXTEND RIGHT TURN LANE AT LA 3040** \$694,427.71

GRADING, MILLING ASPHALT PAVEMENT, PAVEMENT PATCHING, ASPHALT CONCRETE PAVEMENT, PORTLAND CEMENT CONCRETE PAVEMENT, AND RELATED WORK.

Parish(es): Terrebonne

Route(s): LA 24

Federal Number: H012592

Estimated Construction Cost: \$139,300.45

Apparent Low Bidder:

Barriere Construction Co., LLC

PO BOX 1576

BOUTTE, LA 70039

(985)785-7700

\$173,859.03

**H.012854.6 (DBE Goal Project) LOCKPORT: LA 655, 655-S & 3230-1 TO -6**

DRAINAGE STRUCTURES, MILLING ASPHALT PAVEMENT, ASPHALT PAVEMENT PATCHING, CONCRETE PAVEMENT PATCHING, ASPHALT CONCRETE OVERLAY, ADDITIVE ALTERNATE 1 BARRILLEAUX ST. LA 3230-5 (ASPHALT CONCRETE OVERLAY): MILLING ASPHALT PAVEMENT, PAVEMENT PATCHING, ASPHALT CONCRETE OVERLAY; ADDITIVE ALTERNATE 2 VETERANS ST. LA 3230-1 (ASPHALT CONCRETE OVERLAY): MILLING ASPHALT PAVEMENT, PAVEMENT PATCHING, ASPHALT CONCRETE OVERLAY; AND RELATED WORK.

Parish(es): Lafourche

Route(s): LA 3230-1, LA 3230-2, LA 3230-3, LA 3230-4, LA 3230-5, LA 3230-6, LA 655, LA 655-S

Federal Number: H012854

Estimated Construction Cost: \$747,302.14

Apparent Low Bidder:

Barriere Construction Co., LLC

PO BOX 1576

BOUTTE, LA 70039

(985)785-7700

**H.012907.6 (SBE Goal Project) I-12: PAVEMENT MARKER REPLACEMENT I**

REFLECTORIZED RAISED PAVEMENT MARKERS, AND RELATED WORK.

Parish(es): St. Tammany, Tangipahoa

Route(s): I-12

Federal Number: H012907

Estimated Construction Cost: \$335,450.00

Apparent Low Bidder:

Stripe-A-Zone-LA, LLC

24306 HWY 190

Robert, LA 70455

(469)644-8232

\$173,975.00

**H.013049.6 (DBE Goal Project) I-55: HELPER BENTS (BEAVER - TERRY'S CR)**

CLEARING AND GRUBBING, GRADING, REMOVAL OF BRIDGE DECK, REMOVAL OF BRIDGE PILE, STEEL PILES, BRIDGE REPAIRS, AND RELATED WORK.

Parish(es): Tangipahoa

Route(s): I-55

Federal Number: H013049

Estimated Construction Cost: \$3,616,915.00

Apparent Low Bidder:

JB JAMES CONSTRUCTION LLC

1881 Wooddale Blvd

BATON ROUGE, LA 70806

(225)927-3131

\$2,926,655.63



# Number of Louisiana women-owned businesses has doubled over past 20 years

Daily Report Staff  
November 8, 2017

Roughly 144,600 Louisiana businesses are owned by women, which is slightly more than twice the number operating in the state 20 years ago, according to the latest State of Women-Owned Businesses Report from American Express.

While that's an impressive growth rate, it still trails the national average slightly and ranks the Bayou State No. 16 among all states. In 1997, about 70,550 women-owned businesses were operating in Louisiana, putting the 20-year growth rate at roughly 105%.

Nationally, the number of women-owned firms grew by 114% over the past two decades, which far outpaces the 44% growth of all American businesses. Approximately 11.6 million women-owned businesses employ nearly 9 million people and generate more than \$1.7 trillion in revenues.

Louisiana ranks No. 37 in jobs created by women-owned companies since 1997 (12.5% increase), and No. 27 in revenue growth (92%). Of the nation's 50 largest metro areas—which does not include Baton Rouge—New Orleans is ranked No. 38 for growth of women-owned firms (3.2%), No. 46 (3.2%) for job growth and No. 44 for revenue growth (32.4%).





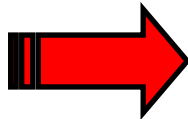
***A-Z Staffing & Consulting***

*rsmith@mytbs.biz*

*504-365-4431/504-305-4432*

*P.O. Box 363*

*St. Rose, LA 70087*



**Ricardo M. Smith is the CEO, Managing Partner of A-Z Staffing & Consulting. Mr. Smith founded A-Z in 2005 in the aftermath of Hurricane Katrina. A-Z is engaged in the hiring of laborers, skilled craftsmen, engineers, professional and executive staff. Today A-Z is considered one of fastest growing staffing firms in the industry.**

**Mr. Smith held positions in Human Resources, Recruiting and Sales and Marketing for fortune 100 companies; Valero, Archer Daniels Midland, AstraZeneca, Northrop Grumman and Sears. He was highly recognized for his work and received numerous awards for his contributions.**

**As a student of public and private schools in St. Charles Parish and Orleans Parish, Mr. Smith has a respect for Diversity and Community. Mr. Smith is active on several boards in the Metro Area. He earned his Bachelor of Science Degree in Marketing from Southern University at Baton Rouge.**

---

# LA DOTD DBE Program Contact Information



**Stephanie P. Ducote, Compliance Programs Director**  
(225)379-1363 | [stephanie.ducote@la.gov](mailto:stephanie.ducote@la.gov)

**Remy Graves, DBE/SBE Program Manager**  
(225)379-1762 | [remy.graves@la.gov](mailto:remy.graves@la.gov)

**Rhonda Wallace, DBE Certification Program Specialist**  
(504) 376-0233 | [rhonda.wallace@la.gov](mailto:rhonda.wallace@la.gov)

**Kandy Fly, DBE Certification Program Specialist/SBE Program Specialist**  
(225) 379-1922 | [kandy.fly@la.gov](mailto:kandy.fly@la.gov)

**Euphemia Renee' Smith, DBE Certification Program Specialist**  
(225) 379-1775 | [euphemia.smith2@la.gov](mailto:euphemia.smith2@la.gov)

**Amber White, DBE Contract Administration Program Specialist**  
(225) 379-1494 | [amber.white@la.gov](mailto:amber.white@la.gov)

**Carla Murray, DBE Project Investigator**  
(225) 379-1774 | [carla.murray@la.gov](mailto:carla.murray@la.gov)

**Judy Halloran, DBE Contract Administration Program Specialist**  
(225) 379-1411 | [judy.halloran@la.gov](mailto:judy.halloran@la.gov)

## DBE Supportive Services Staff

**Jackie des Bordes, Program Coordinator**  
[Jackie.desBordes@sjbgroup.com](mailto:Jackie.desBordes@sjbgroup.com)

**Kenyatta Sparks, Program Assistant**  
[Kenyatta.Sparks@sjbgroup.com](mailto:Kenyatta.Sparks@sjbgroup.com)

**Grace Chatman, Communication Specialist**  
[Grace.Chatman@sjbgroup.com](mailto:Grace.Chatman@sjbgroup.com)

8377 Picardy Avenue  
Baton Rouge, Louisiana 70809  
Office: 225.769.3400  
Fax: 225.769.3596  
Website: [www.SJBGroup.com](http://www.SJBGroup.com)

## What can SJB Group do for YOU?

SJB Group, LLC can provide **free assistance** to certified LADOTD DBE firms in the following areas:

- By **preparing company business cards, profile sheets**, and providing information on recommended target areas for your marketing efforts.
- By acting as a **liaison between the DBE Contractor and Prime Contractor** for project information, and in problems occurring on the jobsite.
- By informing of **upcoming LADOTD lettings**, and project information for other agencies throughout the state. SJB can assist you in locating bid tabulation information as well.
- By providing **assistance and guidance** on material takeoffs, bid preparation and estimating, project scheduling, and planning for projects that DBE firms are bidding or plan to bid in the near future.
- By helping with **office computer operations** to include trouble-shooting problems, Internet access and software installation, and basic to technical computer training.
- By **assisting in financial areas** such as loan and bond package preparations, company financial statements, business plan preparation, and SBA 8(a) and Hub-Zone certification packages.