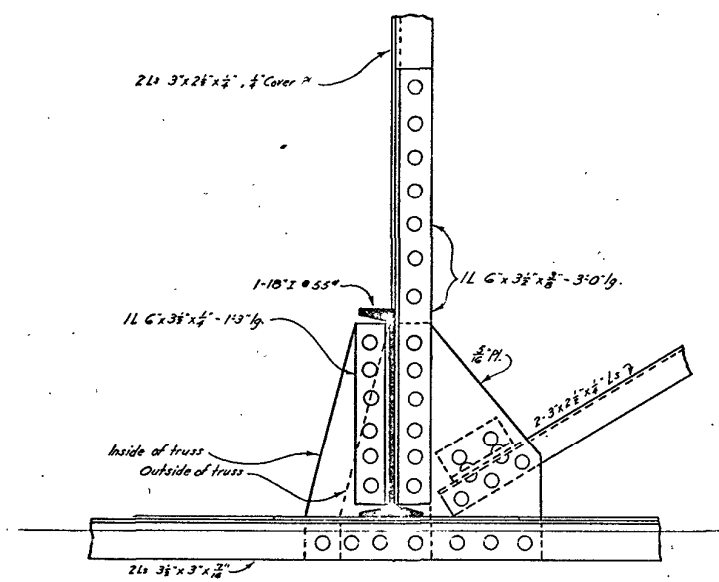
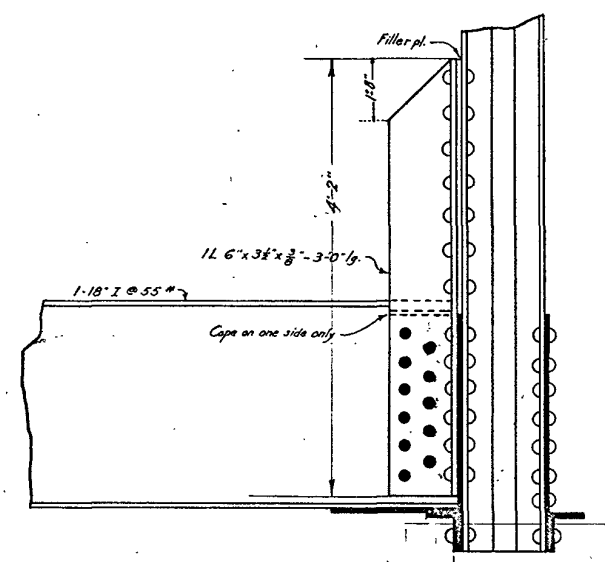


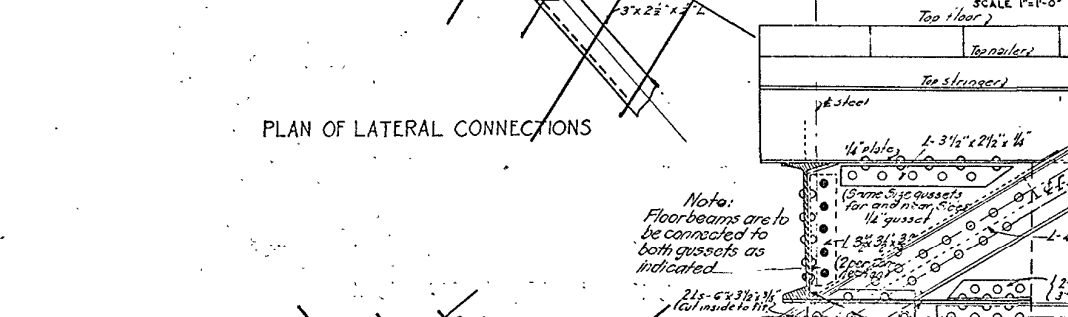
ELEVATION



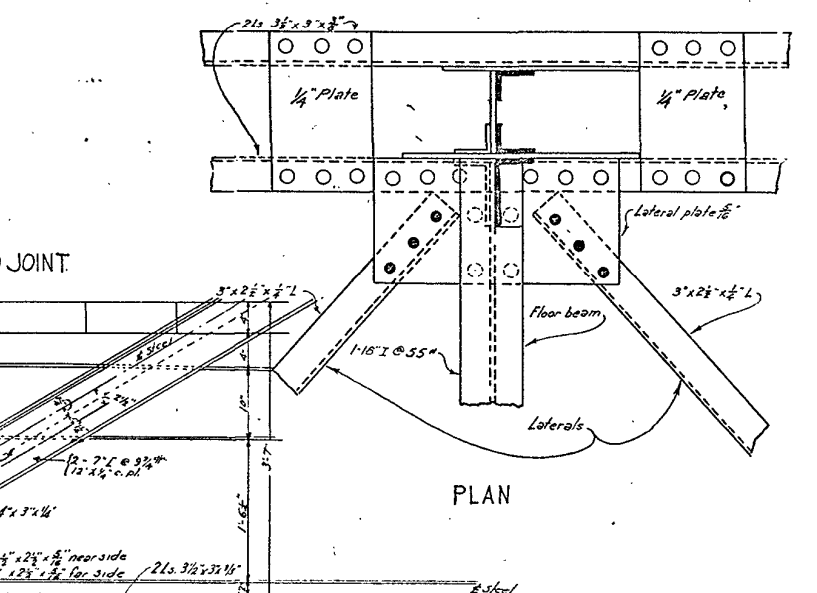
ELEVATION



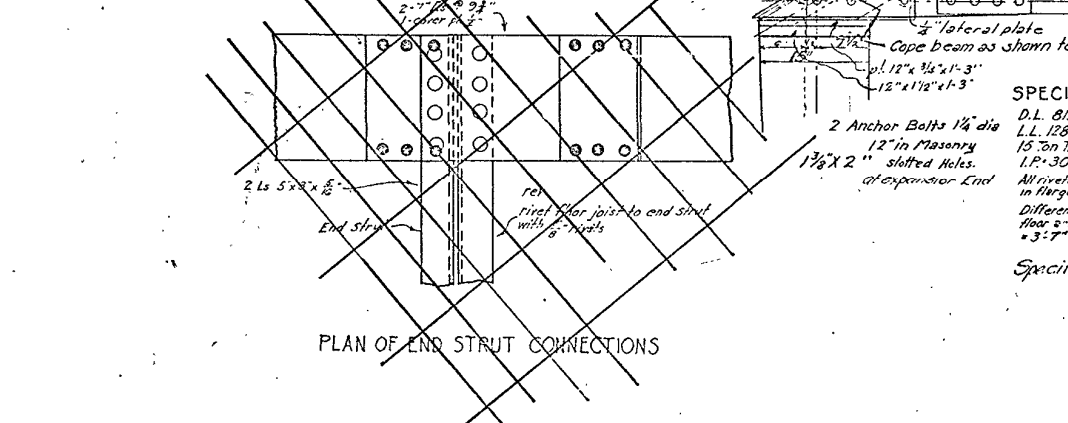
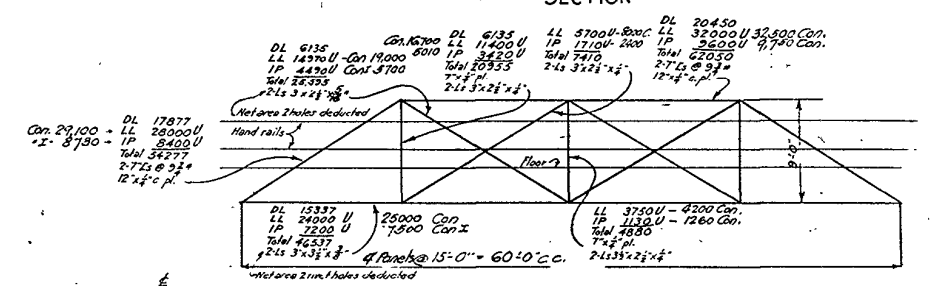
SECTION



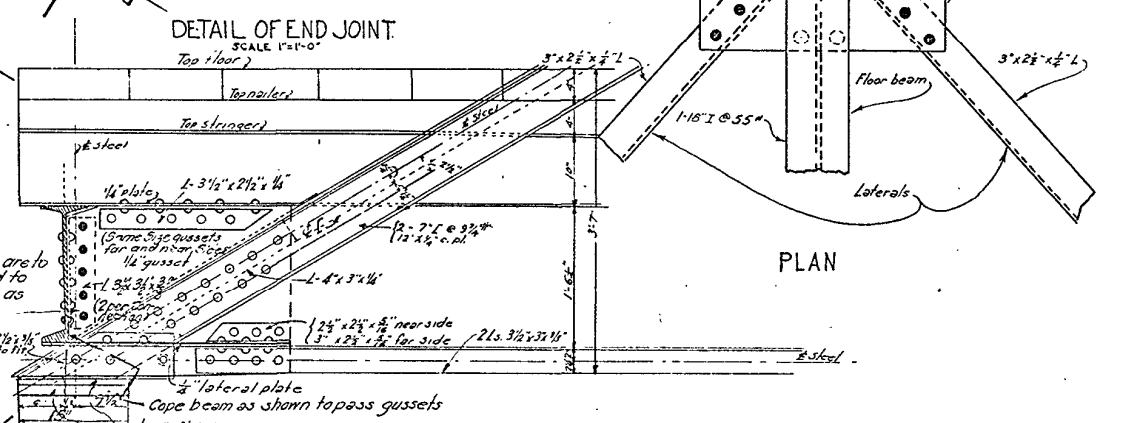
PLAN OF LATERAL CONNECTIONS



PLAN



PLAN OF END STRUT CONNECTIONS



DETAIL OF END JOINT

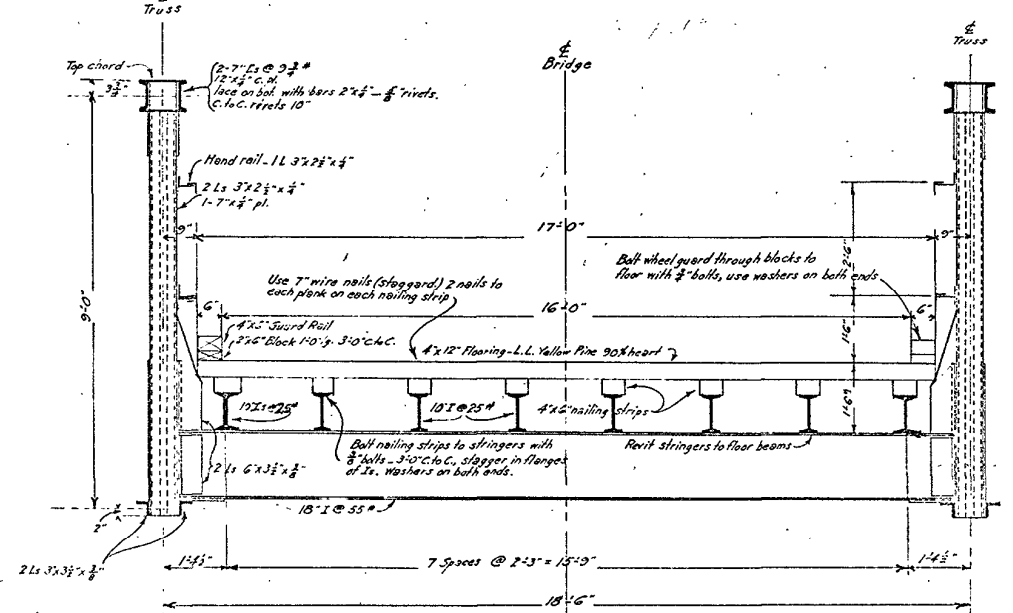
SPECIFICATIONS

D.L. 613 per. lin. ft.
 L.L. 1280 per. lin. ft.
 15 ton Truck test load
 I.P. 30% of L.L.
 All rivets are 3/4" dia except
 in flanges of 7" dia.
 Difference of 1/4" at top of
 floor & 1/2" bottom of shoe pl.
 = 3/4"

MATERIAL

Steel approx. 27000#
 Lumber:
 Flooring, 61 pcs. 4x12x17'0" 4148'
 Wheel guard, 8 pcs. 4x6x16'0" 256'
 Wallers 32' 4x6x16'0" 1024'
 4x 2x6x10'0" 22'
 Total 5470'

Specifications: Louisiana State Highway Dept. dated April, 1918.



CROSS-SECTION OF BRIDGE

**-DETAIL SHEET-
 STANDARD 60' FIXED STEEL SPAN**

-Details drawn to various scales-
**LOUISIANA
 STATE HIGHWAY DEPARTMENT**
 BOARD OF STATE ENGINEERS
 New Orleans, La.
 May 1920

APPROVED *Samuel Davis*
 State Highway Engineer

DESIGNED BY *W. H. ...* DATE
 DRAWN BY *W. H. ...* DATE
 TRACED BY *W. H. ...* DATE
 LETTERED BY *W. H. ...* DATE 5-25-20
 CHECKED BY *F. R. ...* DATE 10-20-20 and Revised