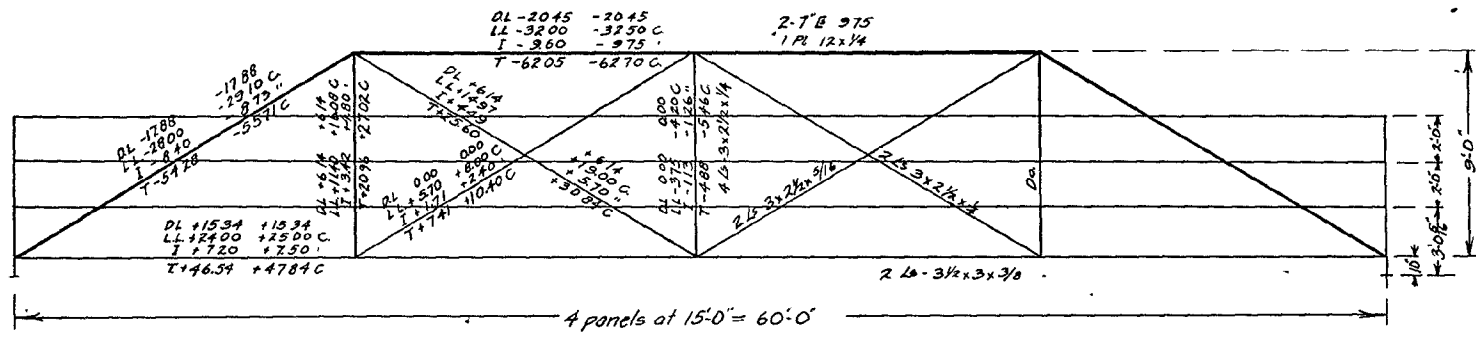
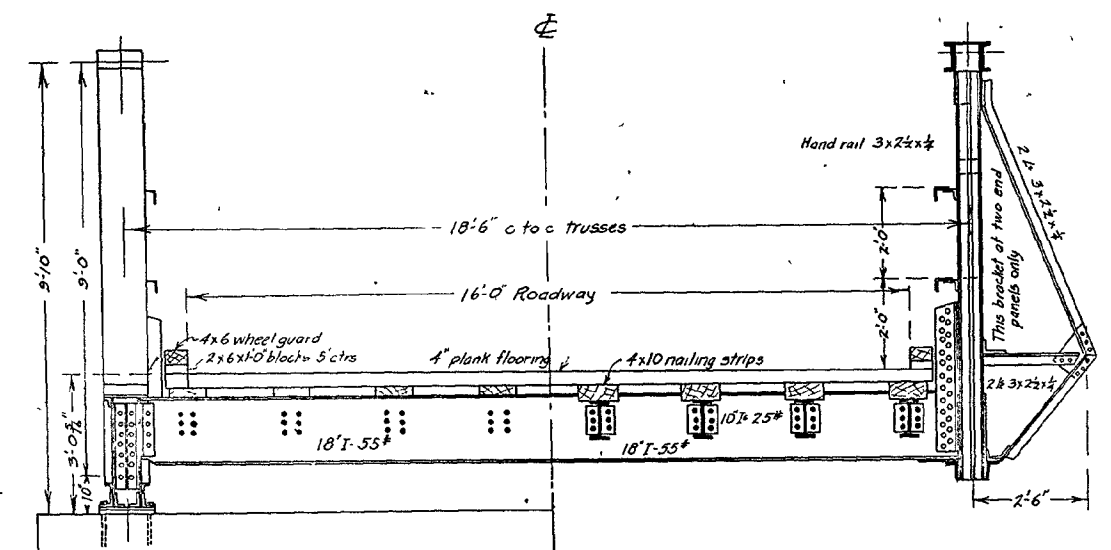


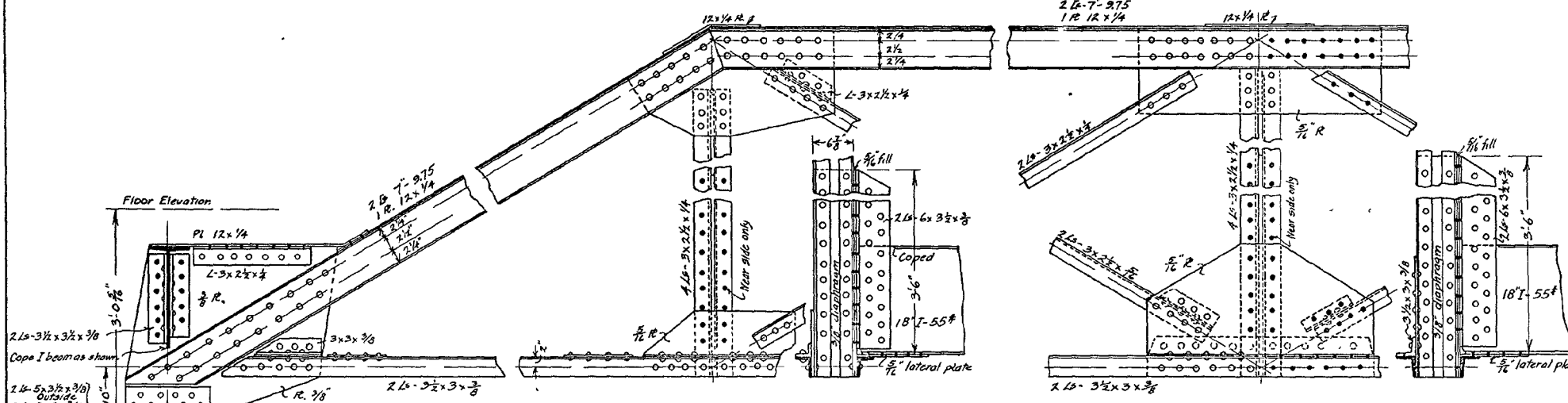
FORM NO.	STATE	PAR. NO.	SCALE	SHEET NO.	TOTAL SHEETS
6	LA				



STRESS DIAGRAM
Scale 1/4 in = 1 ft

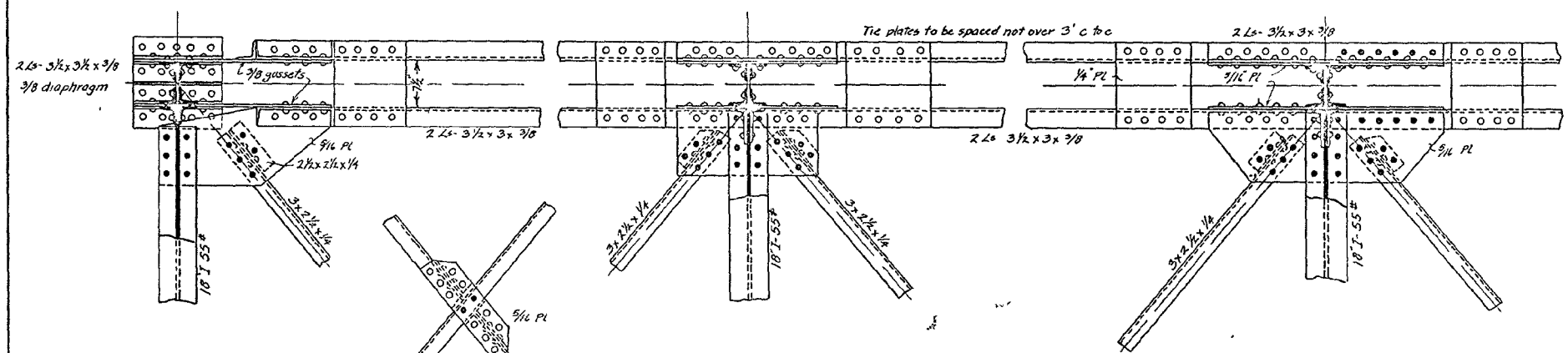


HALF END VIEW HALF SECTION
Scale 1/2 in = 1 ft

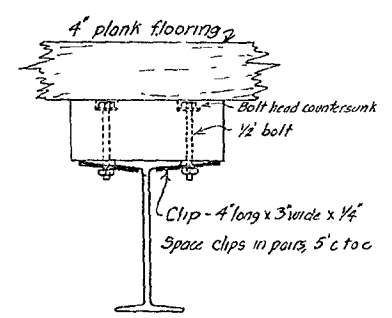


SIDE ELEVATION
Scale 1 in = 1 ft

SPECIFICATIONS
 Dead Load - 819 lbs per lin ft
 Live Load - 1280 lbs per lin ft, or one typical 15 ton truck
 Impact - 30% of live load
 All rivets 3/4 dia except in flanges of 7" B, where 5/8 rivets are to be used.
 All plates 5/16, except where noted otherwise
 Unit stresses - La State Hwy. Dept Spec.
 General Spec - " " " "
 Approx. wgt of steel - 3200 lbs
 Lumber - 5470 ft BM
 All members to receive one coat of shop paint before shipment
 All field connections to be riveted.



BOTTOM LATERALS
Scale 1 in = 1 ft



DETAIL
Showing clips holding nailing strips to top flange of stringers

60'x16' LOW TRUSS SPAN

PLANK FLOORING

Louisiana State Highway Department
State Board of Engineers
NEW ORLEANS, LA.

SEPT 1921

APPROVED: *John P. ...*
STATE HIGHWAY ENGINEER

DESIGN - Original by W W Bagley 5-25-20
Checked & revised by PA Schuyler, 10-20-20
REVISED - A.F.J. 1-20-21
REDRAWN - A.F.J. 1-20-21
REVISIONS -