



Final Right-of-Way Map

GREENSBURG LAND DISTRICT  
T6S - R3E  
SECTION 32

- NOTES:
1. ALL PIPES AND MONUMENTS SHOWN HEREON WERE FOUND.
  2. THE COORDINATES AND BEARINGS SHOWN HEREON ARE BASED ON LOUISIANA STATE PLANE COORDINATE SYSTEM, SOUTH (NAD 83) TO CONVERT FROM GRID BEARINGS TO TRUE BEARINGS USE: 01211.9"
  3. DISTANCES SHOWN ARE HORIZONTAL GROUND DISTANCES. TO CONVERT DISTANCES DERIVED FROM COORDINATES SHOWN HEREON TO HORIZONTAL GROUND DISTANCES, USE SCALE FACTOR: 0.9999615

☉ CURVE DATA  
La - US 190

P.I. STA. 109+57.15  
Y = 721426.1513  
X = 3408738.7861  
Δ = 29°57'24.3" LT.  
D = 1413'02.3"  
T = 107.82'  
L = 210.71'  
R = 403.00'

☉ CURVE DATA  
La - US 190

P.I. STA. 111+06.38  
Y = 721487.0168  
X = 3408800.4251  
Δ = 18°44'54.2" RT.  
D = 3811'49.9"  
T = 24.76'  
L = 49.08'  
R = 150.00'

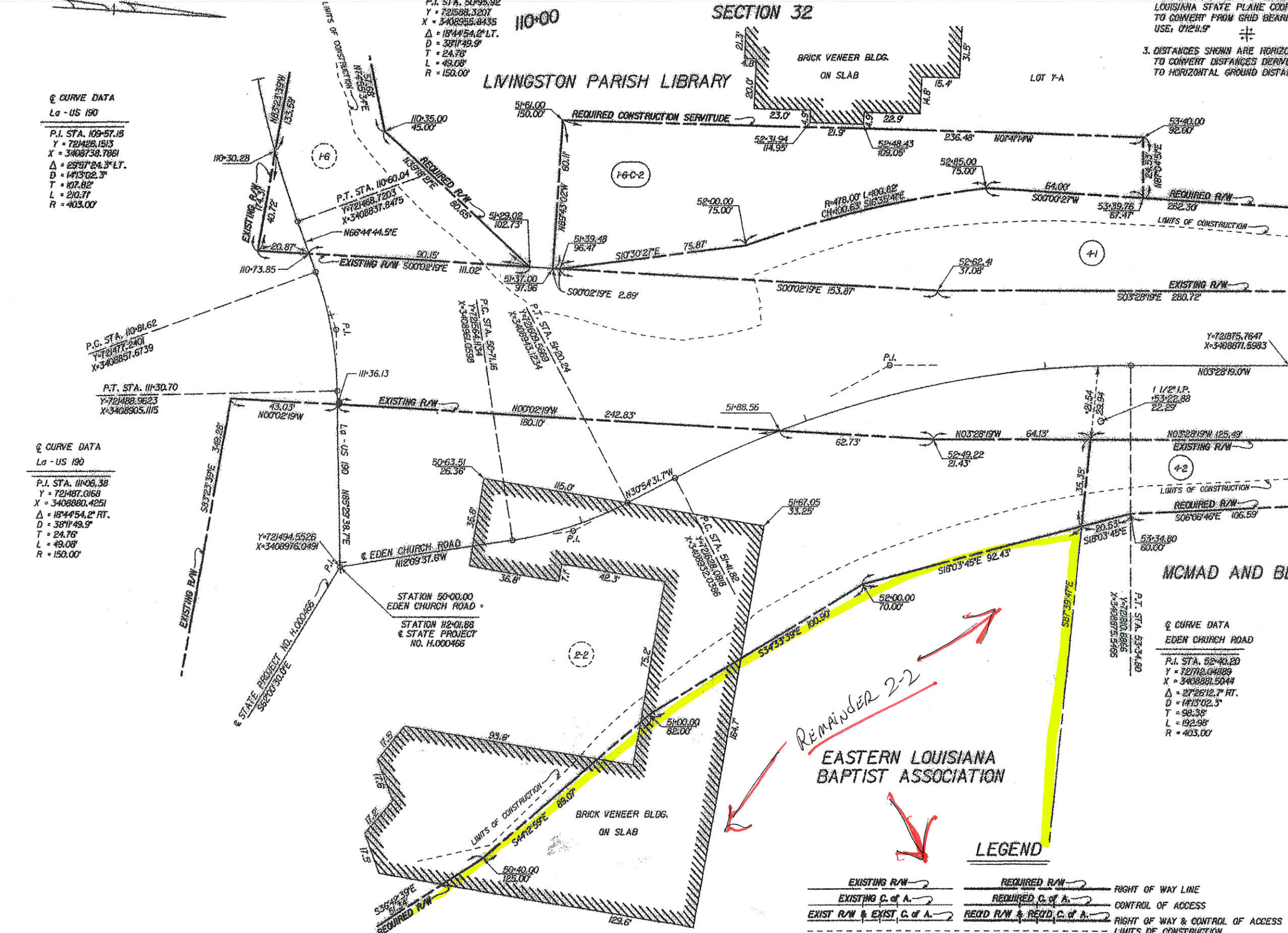
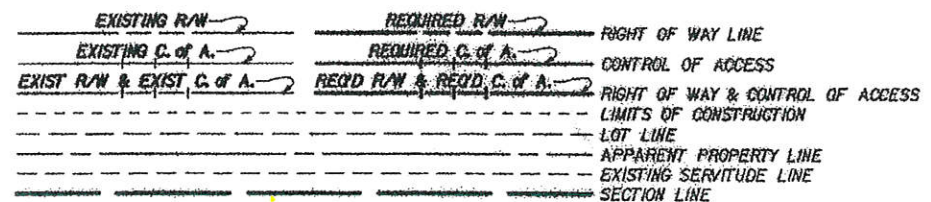
☉ CURVE DATA  
EDEN CHURCH ROAD

P.I. STA. 50+95.92  
Y = 721588.3207  
X = 3408935.8435  
Δ = 18°44'54.2" LT.  
D = 3811'49.9"  
T = 24.76'  
L = 49.08'  
R = 150.00'

☉ CURVE DATA  
EDEN CHURCH ROAD

P.I. STA. 52+40.20  
Y = 721712.64889  
X = 3408881.5044  
Δ = 27°26'12.7" RT.  
D = 1413'02.3"  
T = 98.36'  
L = 192.98'  
R = 403.00'

4-2	MCMAD AND BEKK, L.L.P.	COB 887 PAGE 458 MAR. 4, 2005	0.082 AC.
4-1	LIVINGSTON PARISH LIBRARY	COB 865 PAGE 90 JUNE 23, 2004	0.280 AC.
PARCEL	OWNER	ACQUISITION	AREA



Remainder 2-2

EASTERN LOUISIANA BAPTIST ASSOCIATION

MCMAD AND BEKK, L.L.P.



SHEET NUMBER

LIVINGSTON PARISH CONTROL

COMPUTED BY: BROOKS, R. M. USREY  
CHECKED BY: M. USREY  
DETAILED BY: M. ROBERTS

RIGHT OF WAY MAP  
STATE PROJECT NO. H.000466  
US 190, ROUNDABOUT

EVA GRA ENGINEERING

09:47

4/28/2014

Final Right-of-Way Map

F:\00 PROJECTS\11-022\Hwy 190\dwg\11022\_hwy190\_fw\_02.dgn

# GREENSBURG LAND DISTRICT

## T6S - R3E SECTION 32

### ☉ CURVE DATA

P.I. STA. 109+57.15  
 Y = 721425.1513  
 X = 3408738.7861  
 $\Delta = 29^{\circ}57'24.3" \text{ LT.}$   
 $D = 1413'02.3"$   
 $T = 107.82'$   
 $L = 210.71'$   
 $R = 403.00'$

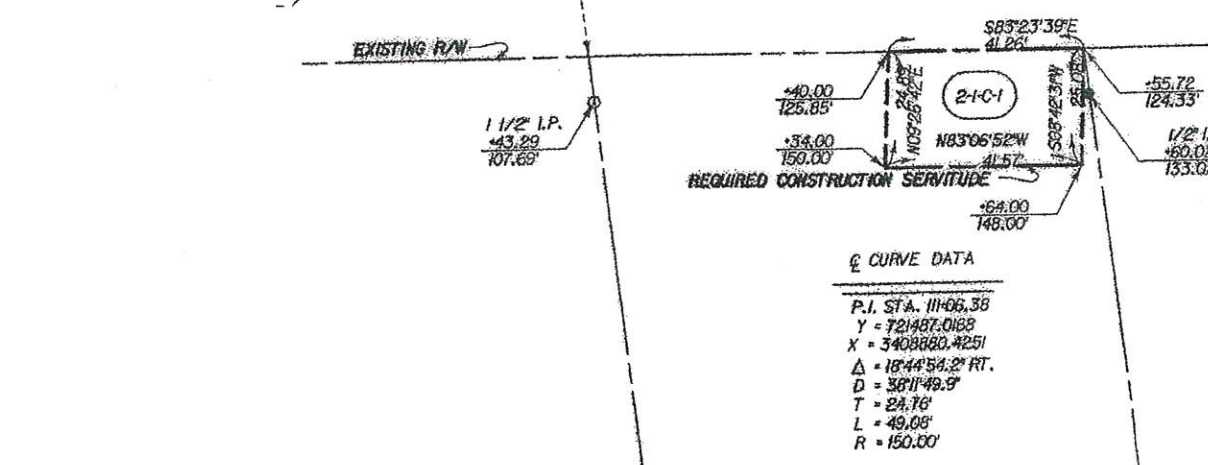
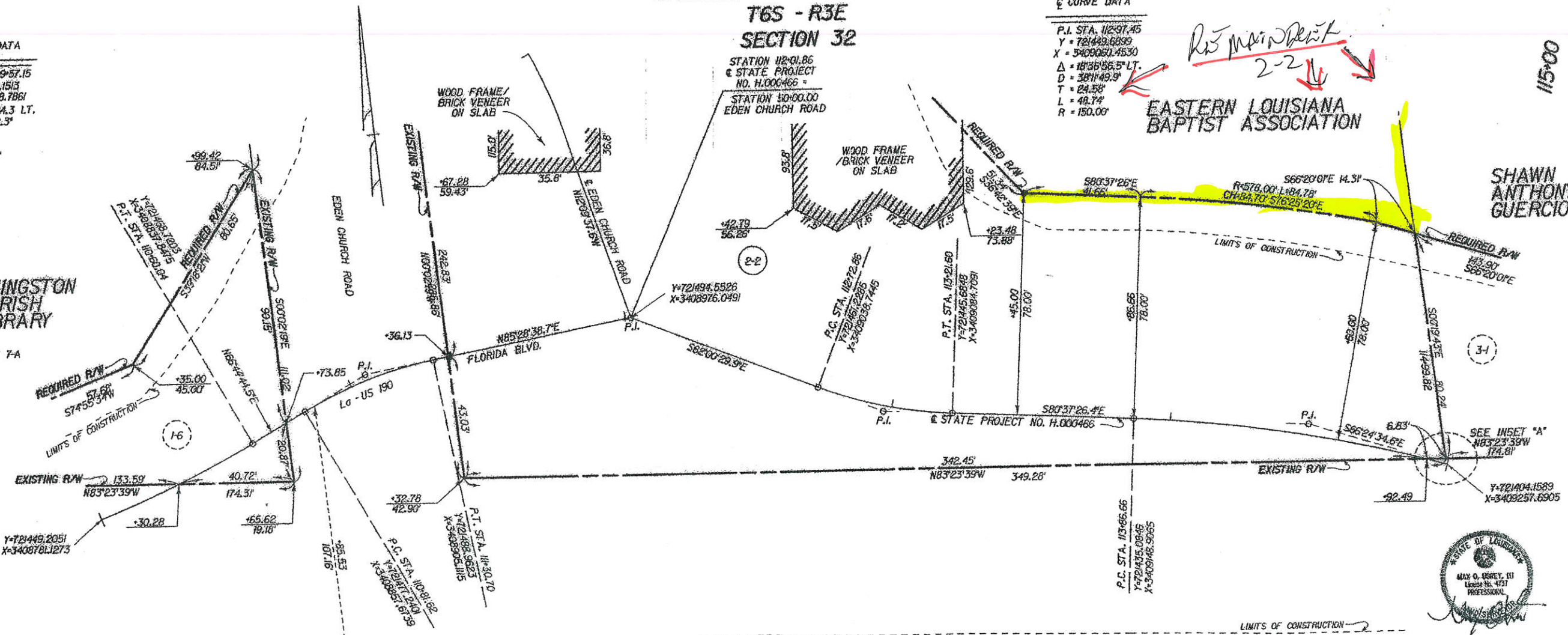
### ☉ CURVE DATA

P.I. STA. 112+97.45  
 Y = 721449.6899  
 X = 3409050.4530  
 $\Delta = 18^{\circ}35'55.5" \text{ LT.}$   
 $D = 3811'49.9"$   
 $T = 24.58'$   
 $L = 49.74'$   
 $R = 150.00'$

*R3 Main Plat*  
 2-2  
**EASTERN LOUISIANA BAPTIST ASSOCIATION**

**SHAWN ANTHONY GUERCIO**

**LIVINGSTON PARISH LIBRARY**  
 LOT 7A



### ☉ CURVE DATA

P.I. STA. 111+68.38  
 Y = 721487.0188  
 X = 3408880.4251  
 $\Delta = 18^{\circ}44'54.2" \text{ RT.}$   
 $D = 3811'49.9"$   
 $T = 24.76'$   
 $L = 49.08'$   
 $R = 150.00'$

### ☉ CURVE DATA

P.I. STA. 114+49.01  
 Y = 721424.9283  
 X = 3408920.4157  
 $\Delta = 141^{\circ}25'51.8" \text{ RT.}$   
 $D = 1127'33.0"$   
 $T = 62.34'$   
 $L = 124.04'$   
 $R = 500.00'$

### NOTES:

- ALL PIPES AND MONUMENTS SHOWN HEREON WERE FOUND.
- THE COORDINATES AND BEARINGS SHOWN HEREON ARE BASED ON LOUISIANA STATE PLANE COORDINATE SYSTEM, SOUTH ZONE (NAD 83) TO CONVERT FROM GRID BEARINGS TO TRUE BEARINGS USE:  $012'12.5"$
- DISTANCES SHOWN ARE HORIZONTAL GROUND DISTANCES. TO CONVERT DISTANCES DERIVED FROM COORDINATES SHOWN HEREON TO HORIZONTAL GROUND DISTANCES, USE SCALE FACTOR: 0.99996105

### LEGEND

- EXISTING R/W → RIGHT OF WAY LINE
- EXISTING C. of A. → CONTROL OF ACCESS
- EXIST. R/W & EXIST. C. of A. → RIGHT OF WAY & CONTROL OF ACCESS
- REQD. R/W & REQD. C. of A. → RIGHT OF WAY & CONTROL OF ACCESS
- LIMITS OF CONSTRUCTION
- - - - - LOT LINE
- - - - - APPARENT PROPERTY LINE
- - - - - EXISTING SERVITUDE LINE
- SECTION LINE

PARCEL	OWNER	ACQUISITION	AREA
2-2-C-1			DELETED
2-2	EASTERN LOUISIANA BAPTIST ASSOCIATION	COB 1051 PAGE 299 NOV. 5, 2009	1.361 AC.
2-1-C-1	TRITON INVESTMENTS, LLC	COB 813 PAGE 919 SEPT. 6, 2002	0.024 AC.