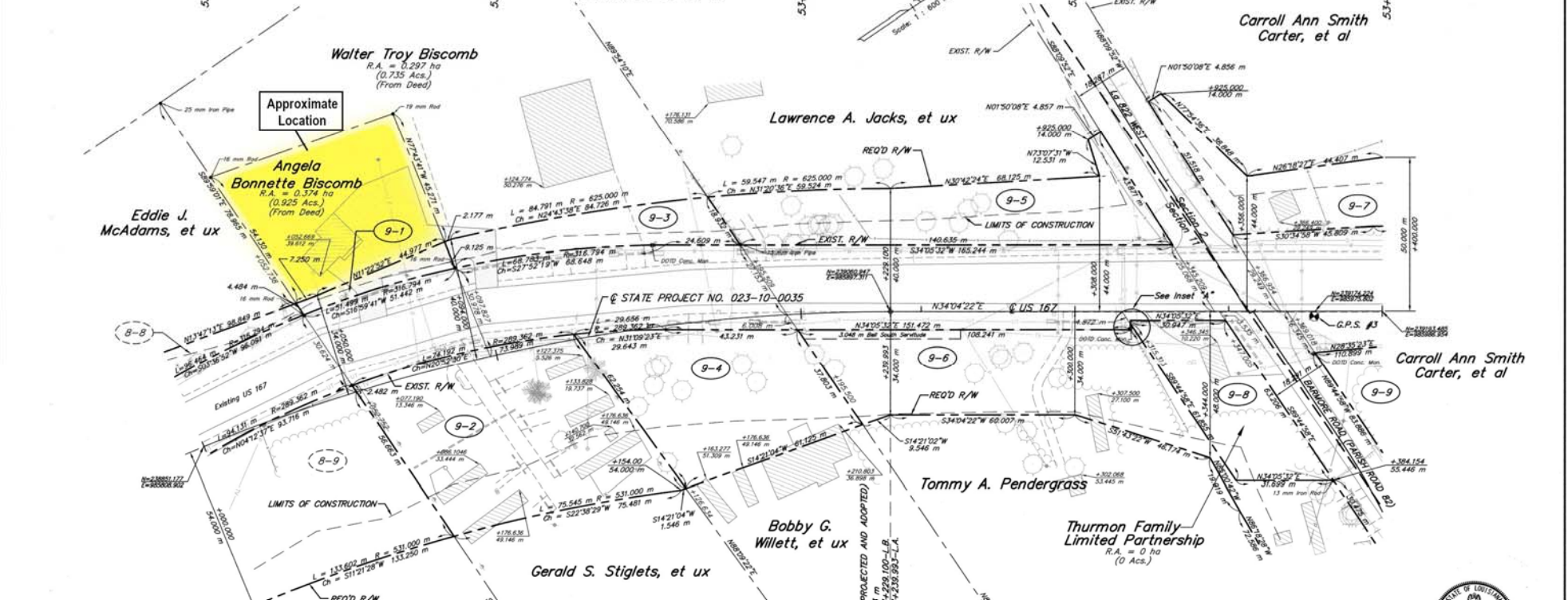


38373009

F.A.P.	STATE PROJECT	PARISH	SHEET NO.
	023-10-0035	LINCOLN	69

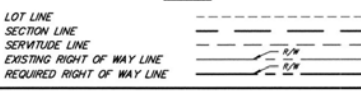
DISTRICT NORTH OF THE RED RIVER
T 19 N - R 3 W
SECTIONS 2 & 11



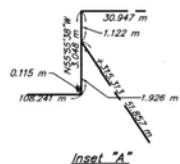
- NOTES:**
1. THE COORDINATES AND BEARINGS SHOWN HEREON ARE GRID AND ARE BASED ON THE LOUISIANA COORDINATE SYSTEM NORTH ZONE, NAD 83. COORDINATES DERIVED FROM GPS OBSERVATION.
 2. DISTANCES SHOWN ARE GRID DISTANCES.
 3. TO CONVERT FROM GRID BEARINGS TO TRUE BEARINGS USE: $\pm \frac{1}{2}$ = 0°4'53.6\"
 4. TO CONVERT DISTANCES DERIVED FROM COORDINATES SHOWN HEREON TO HORIZONTAL GROUND DISTANCES USE SCALE FACTOR: 1.0000027
 5. THE CONSULTANT IS RESPONSIBLE FOR THE DETERMINATION OF REQUIRED RIGHT-OF-WAY LINES, DRAFTING AND COMPUTATIONS SHOWN HEREON. THE DEPARTMENT OF TRANSPORTATION AND DEVELOPMENT IS RESPONSIBLE FOR THE DETERMINATION OF EXISTING PROPERTY LINES, FIELD LOCATION OF PIPES AND MONUMENTS SHOWN HEREON.

© CURVE DATA:
 P.I. STA. 52+915.683
 $\Delta = 73^{\circ}24'56.8''$ RT.
 T = 436.171 m
 L = 749.588 m
 R = 585.000 m

LEGEND



DATE	DESCRIPTION	BY
04/25/04	REVISED ACADRE ON PARCELS 9-9 & 9-7	D.K.
11/01/03	ADDED NOTE No. 5	LAV
10/20/03	REVISED S.P. NO. 023-10-0042 TO S.P. NO. 023-10-0035	D.K.
06/22/03	REVISED R/O/W ON PARCELS 9-9 & 9-1 THRU 9-9	A.P.S.



Field Bk. No. 177-895

PARCEL	OWNER	ACQUISITION	AREA
9-9	Carroll Ann Smith Carter, et al	C.O.B. 1048 Pg. 60 January 25, 1999	0.9364 ha 2.314 Acs.
9-8	Thurmon Family Limited Partnership	C.O.B. 904 Pg. 195 December 28, 1994	0.1664 ha 0.411 Acs.
9-7	Carroll Ann Smith Carter, et al	C.O.B. 1048 Pg. 60 January 25, 1999	0.2724 ha 0.673 Acs.
9-6	Tommy A. Pendergrass	C.O.B. 448 Pg. 140 October 10, 1983	0.5595 ha 1.383 Acs.
9-5	Lawrence A. Jacks, et ux	C.O.B. 526 Pg. 192 April 22, 1989	0.2832 ha 0.700 Acs.
9-4	Bobby G. Willett, et ux	C.O.B. 683 Pg. 131 December 30, 1988	0.3023 ha 0.747 Acs.
9-3	Walter Troy Biscomb	C.O.B. 973 Pg. 230 December 18, 1996	0.1080 ha 0.267 Acs.
9-2	Gerald S. Stiglets, et ux	C.O.B. 423 Pg. 348 March 21, 1983	0.4287 ha 1.059 Acs.
9-1	Angela Bonnette Biscomb	C.O.B. 997 Pg. 162 August 22, 1997	0.0306 ha 0.076 Acs.

STATE OF LOUISIANA
 DEPARTMENT OF TRANSPORTATION & DEVELOPMENT

RIGHT OF WAY MAP

STATE PROJECT NO. 023-10-0035
 VIENNA - JCT. La 822

LINCOLN PARISH
 US 167

DATE: DECEMBER 3, 2002
 DRAWN BY: BS

SCALE: 1 : 600
 COMPUTED BY: RDL

SHEET NO.
 9

FILE NO. 3-16-1-028