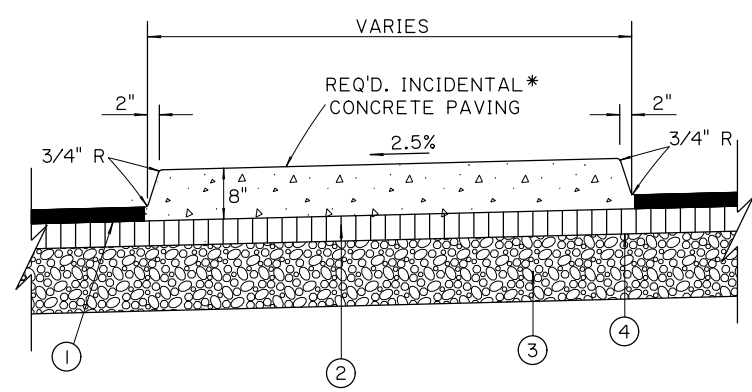


CONCRETE ISLAND DETAIL

- ① R=50.00'
Δ=50°55'20"
- ② R=2'
Δ=133°43'03"
- ③ R=3'
Δ=134°32'41"
- ④ R=2'
Δ=170°16'45"

* TO BE PAID FOR UNDER ITEM 706-03-00500



TYPICAL FINISHED SECTION A-A (N.T.S.)

- LEGEND:
- ① 2.0" SUPERPAVE ASPHALTIC CONCRETE WEARING COURSE (LEVEL 1)
 - ② 4.0" SUPERPAVE ASPHALTIC CONCRETE BINDER COURSE (LEVEL 1)
 - ③ 8.5" CLASS II BASE COURSE (SOIL CEMENT)
 - ④ TYPE E ASPHALTIC SURFACE TREATMENT INTERLAYER (2 APPLICATIONS)

SURV. & CURVE DATA
 P.I. STA. 48+25.70
 Δ = 6°38'23" RT.
 D = 1°54'09"
 T = 174.69'
 L = 348.99'
 R = 3011.51'

STA. 100+00.00 (SURV. &) (LA 637) =
 STA. 50+00.00 (SURV. &) (LA 44)

SURV. & CURVE DATA
 P.I. STA. 50+38.93
 Δ = 5°25'12" RT.
 D = 6°57'59"
 T = 38.93'
 L = 77.80'
 R = 822.45'

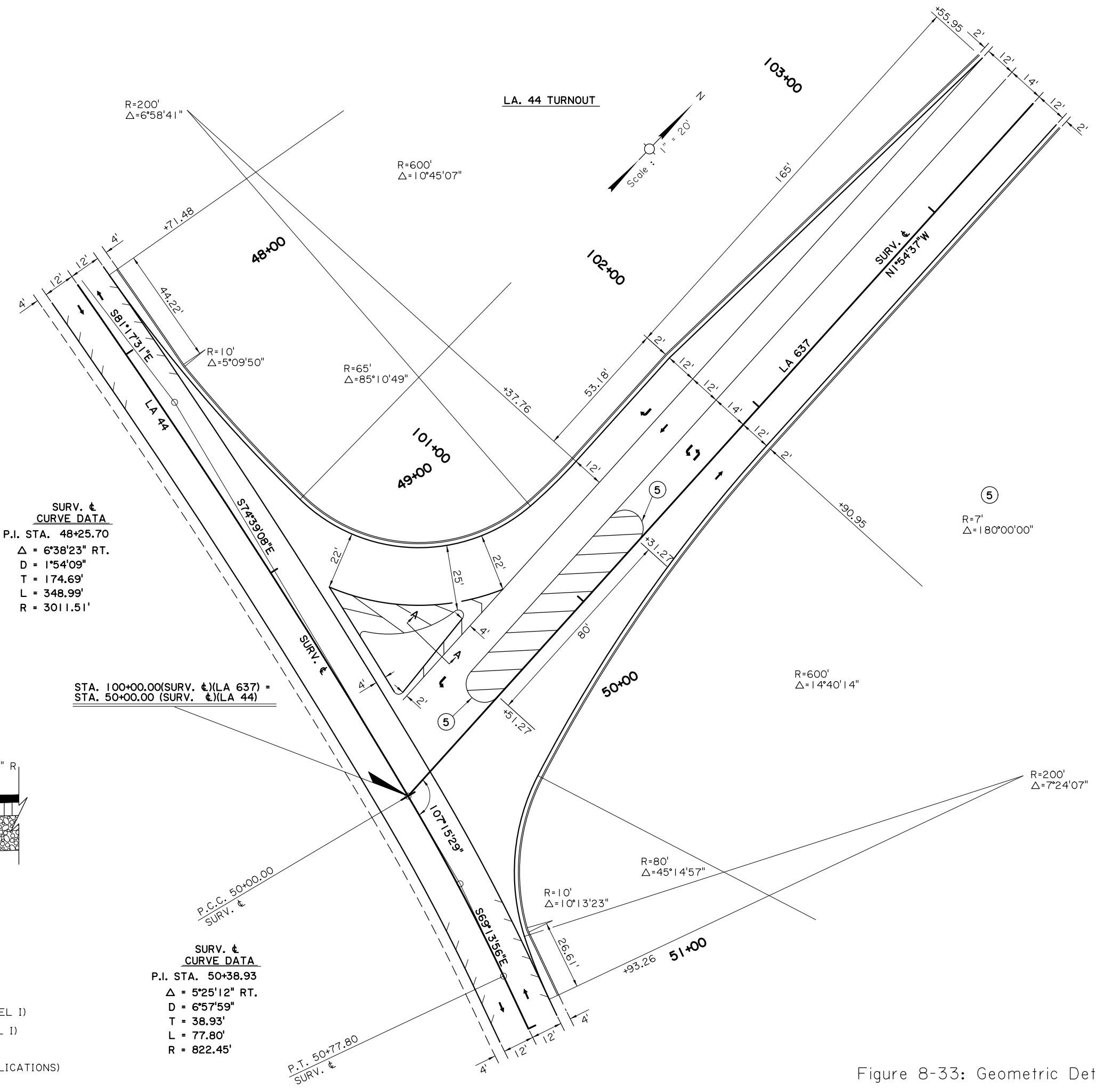


Figure 8-33: Geometric Details