

# Policy for New/Modified Access to Controlled Access Facilities





# Current Policy

## 1. EDSM No. I.4.3.2 – New Interchange Requests

- Formal request to LADOTD from sponsor stating reason for new access
- Request advanced if:
  - Minimum interchange spacing met
  - New access connects to public arterial or collector routes
  - Provide access for all traffic movements
  - Included in regional/state transportation plan

# Current Policy

## 2. Policy for New Access to Controlled Access Facilities

Outlines steps required for evaluation:

- Introductory Meeting (Step 1)
  - Sponsor, LADOTD Admin., and FHWA discuss proposed access
  - Determination made to proceed and develop study
  
- Initiation Meeting (Step 2)
  - With DOTD Traffic Eng. Mgmt. Section to discuss scope and contents of Interchange Modification/Justification Report
  - Discuss study area, data needs, analysis periods, software

# Current Policy

- Memorandum of Understanding(MOU) (Step 4)
  - Signed agreement between sponsor/LADOTD/FHWA
  - Includes general scope of study (limits, analysis periods)
  - “Tailored” version of the policy listing responsibilities
- Data Collection (Step 5)
- Analyses (Step 6)
  - *“Traffic, safety, geometric, operational and other appropriate analyses are performed...”*



# Current Policy

- Complete Interchange Modification/Justification Report (Steps 7 & 8)
- LADOTD Review & Recommendations ( Steps 9 & 10)
- FHWA Review & Determination (Steps 11 & 12)



# Current Policy

## Limitations

- Introductory/Initiation Meeting (Step 1/2)
  - Type of study required? (IMR/IJR/Study)
- Memorandum of Understanding (Step 4)
  - Answered WHO/WHEN (WHAT), not WHY/HOW

# Current Policy

## Limitations

- Analyses (Step 6)
  - Answered WHO/WHEN, not HOW
  
- Compiled Report (Steps 7 & 8)
  - FHWA policy points adequately addressed?



# Revised Policy

- EDSM No. 1.4.3.2 – Request for New or Modified Access on Control of Access Facilities
  - I. Initial Request / Introductory Meeting
    - *Type of study required?*
    - Chart – Levels of Study Required (Policy Attachment)





# Revised Policy

## Attachments – Approval List

Levels of Study Required for Interstate Access Requests				
Type of Access Change	IJR	IMR	Study	No Study
New Freeway-to-Freeway Interchange	X			
Major Modification of Freeway-to-Freeway Interchange	X			
New Ramp(s) to/from Continuous Frontage Road	X			
New Freeway-to-Crossroad Interchange Within TMA	X			
New Freeway-to-Crossroad Interchange Outside TMA	X			
Major Modification of Freeway-to-Crossroad Interchange		X		
Adding New Ramp(s) from an Existing Interchange (such as a cloverleaf (by adding access points to the mainline)		X		
Removing Ramp(s) from an Existing Interchange (such as a split diamond)		X		
Completion of Basic Movements at Partial Interchange		X		
Locked Gate Access (at existing ramp)		X		
Abandonment of Ramps or Interchanges		X		
Adding an Auxillary Lane Between Two Adjacent Interchange Ramps		X		
Cloverleaf (such that access to interstate is not altered)		X		
Split Diamond		X		
DDI		X		
2 exit lanes at existing ramp (increasing conflict points to mainline)		X		
SPI			X	
Adding Turn Lane or Through Lane on Cross Road at Ramp Termini			X	
Widening of Existing Ramp to Add Lane(s) (does not affect mainline or extend to theoretical gore)			X	
Relocate Ramp Termini Along Existing Cross Road within CoA			X	
Relocating Existing Entrance/Exit Gore Point Along Freeway Mainline			X	

# Revised Policy

## II. Initiation Meeting

- Sponsor required to develop and provide items for discussion (ex. Purpose & Need and Goals & Objectives)

## III. MOU

*Answered WHO/WHEN (WHAT), not WHY/HOW*

- Clearly defined Purpose & Need and Goals & Objectives
- Appropriate Measures of Effectiveness, Methodology



# Revised Policy

## IV. Access Justification Report (AJR) Study

*MOU/Policy Answered WHO/WHEN, not HOW*

Study details outlined in DOTD Traffic Eng. Manual  
(specific network components, results, deliverables/format)

A. Phase I – Existing Network Study\*

B. Phase II – Alternative Study

\*Every AJR will contain Phase I study, but may not require Phase II.



# Revised Policy

## IV. AJR Study (Continued)

### C. Final IJR Submittal

- *FHWA policy points adequately addressed?*
- Access request checklist (Policy attachment)



# Revised Policy

## Attachment – Access Request Checklist

**Policy Point 1: “The need being addressed by the request cannot be adequately satisfied by existing interchanges to the Interstate, and/or local roads and streets in the corridor can neither provide the desired access, nor can they be reasonably improved (such as access control along surface streets, improving traffic control, modifying ramp terminals and intersections, adding turn bays or lengthening storage) to satisfactorily accommodate the design-year demands (23 CFR 625.2(a)).”**

Addressed?			Question	Reference Location	Verified (per DOTD)	
Yes	No	N/A			Initial	Date
			Does the access request clearly describe the need and purpose of the proposal and identify project goals and objectives that are specific and measurable?			
			Is the proposal in the best interest of the travelling public, or does it merely serve a narrow interest?			
			Is the proposal serving a regional transportation need, or is it merely compensating for deficiencies in the local network of arterials and collectors?			
			In lieu of granting new access, is there any reasonable alternative consisting of improvements to the existing roadway(s) or adjacent access points that could serve the need and purpose?			



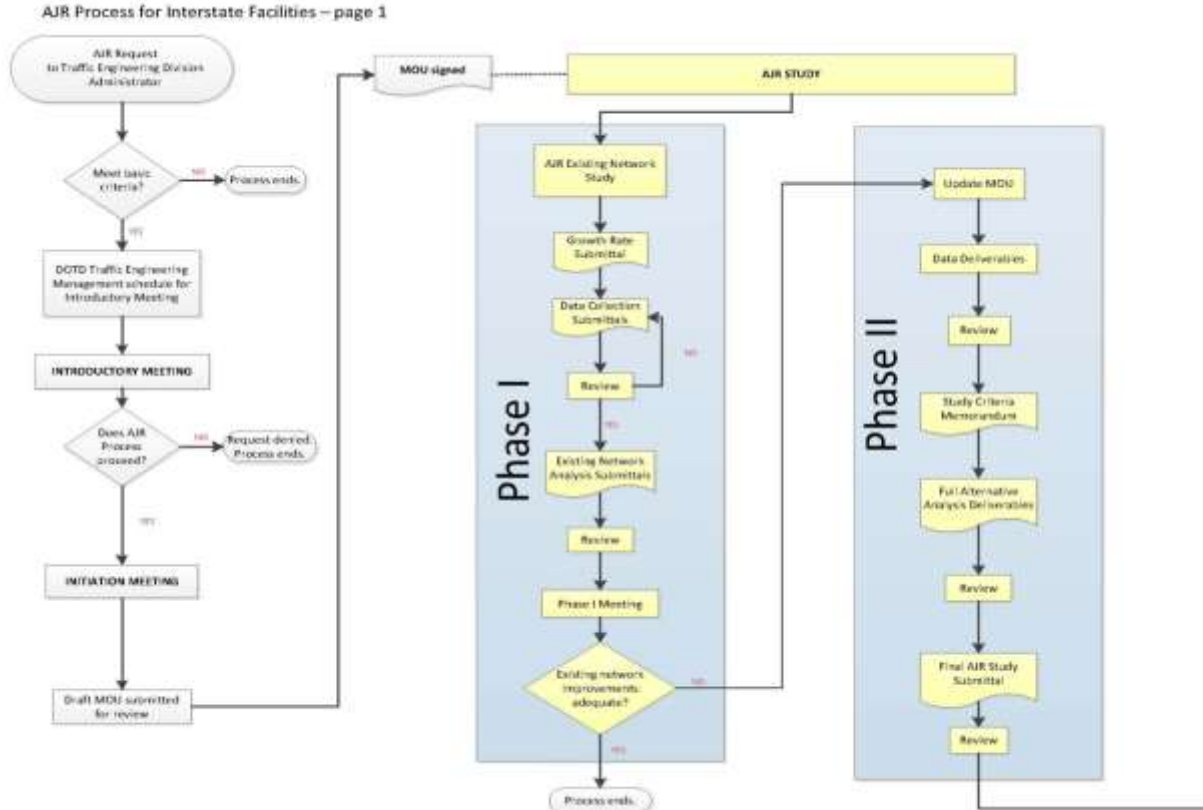
# Revised Policy

V. LADOTD Review / Recommendations

VI. FHWA Review / Determination

# Revised Policy

## Attachment – AJR Process Flow Chart

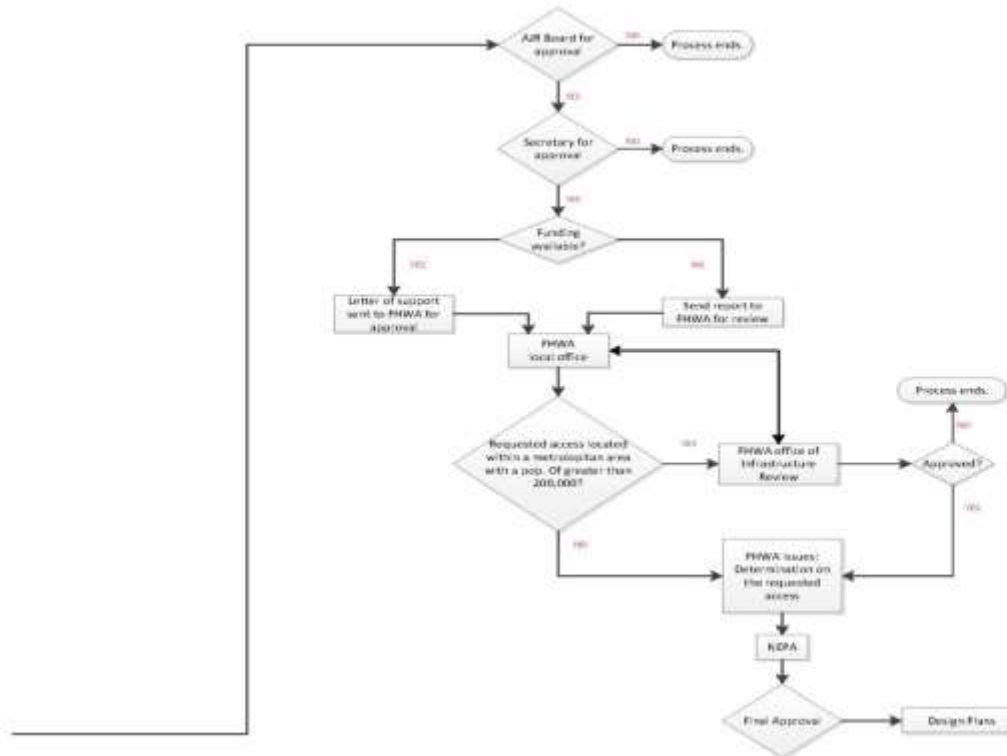




# Revised Policy

## Attachment – AJR Process Flow Chart

AJR Process for Interstate Facilities – page 2







Brandon S. DeJean

(225)242-4643

[Brandon.DeJean@LA.gov](mailto:Brandon.DeJean@LA.gov)