

# District 61 Safety Investment Plan

*Strategic Investments to Save Lives*

*presented to*

---

Statewide Traffic Engineer's  
Meeting

*presented by*

---

April Renard, P.E., PTOE

Department of Transportation and  
Development

July 2017



# Safety Trivia Question 1

Vehicle #1 was going 75 mph in a 55mph on LA 67 in EBR when the driver ran off the roadway to the right, over steered and lost control of the vehicle. The vehicle went sliding sideways and came to a rest in a drainage ditch, striking a small tree. No one was injured. When the officer asked the driver what caused him to run off the road, the driver stated:

- 45% A. He dropped his pint of Jack Daniels on the floorboard so he bent down to get it.
- 30%  B. He was trying to hit an opossum so he could eat him for breakfast.
- 3% C. He thought he saw The Beatles crossing Abbey Road in front of him.
- 23% D. He forgot his grandmother at the bar and wanted to get back before she noticed.

## Safety Trivia Question 2

---

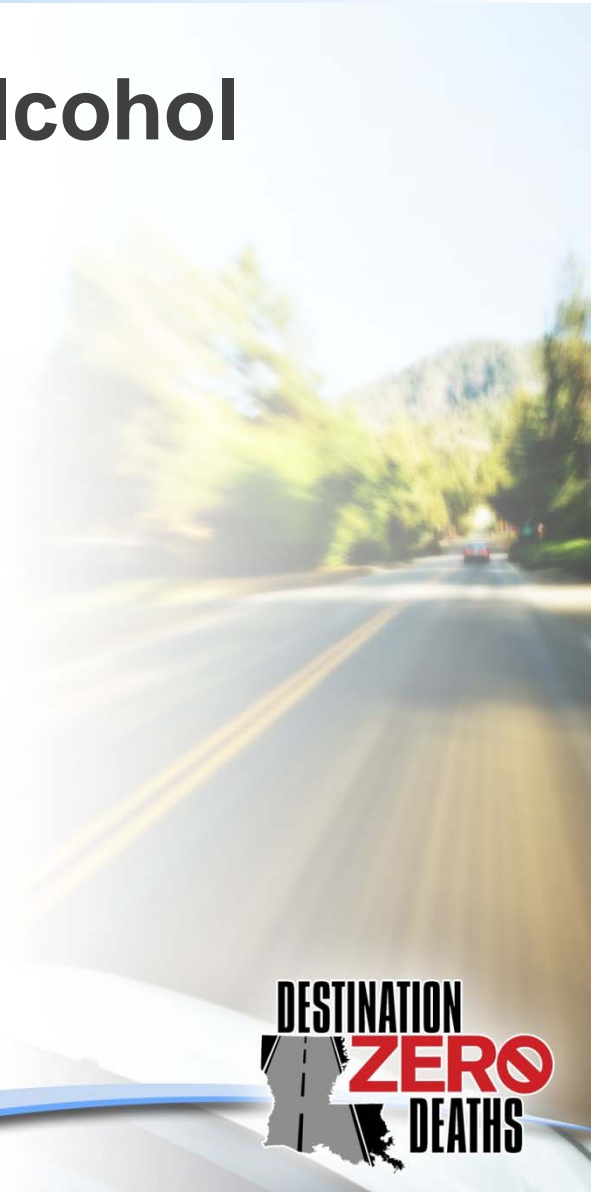
What was the driver's blood alcohol content?

30%    A. 0.00

14%    B. 0.05

34%    C. 0.19

23% ✓ D. 0.30



## Safety Trivia Question 3

**Why did the man from Alabama drive backwards ending up in a drainage ditch?**

- 11% A. He saw a UFO in the sky and didn't want it to beam him up.
- 24% B. He realized he was going the wrong way
- 33%  C. He saw an alligator in the roadway and wanted to get a better look.
- 32% D. He wanted to see how fast he could drive his car backwards, like Mater

## Safety Trivia Question 4

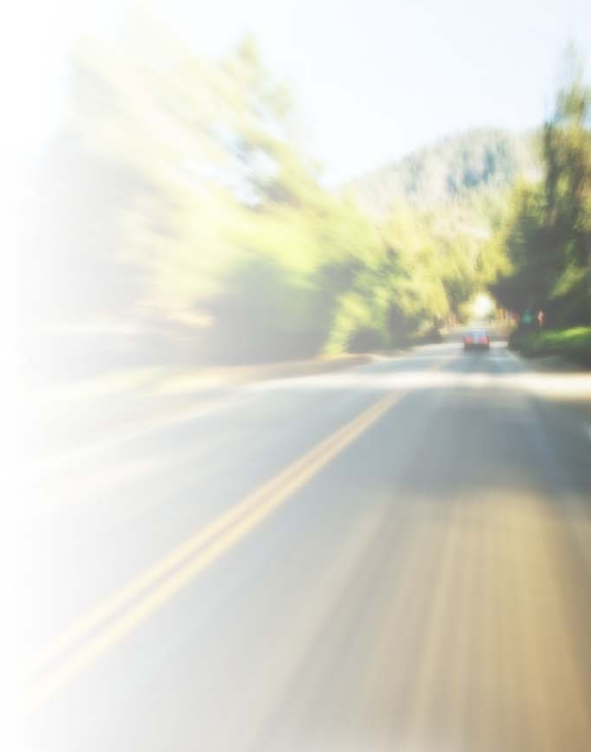
How many crashes involving alligators were reported in 2015?

12%    A. 9

28%    B. 18

33% ✓ C. 37

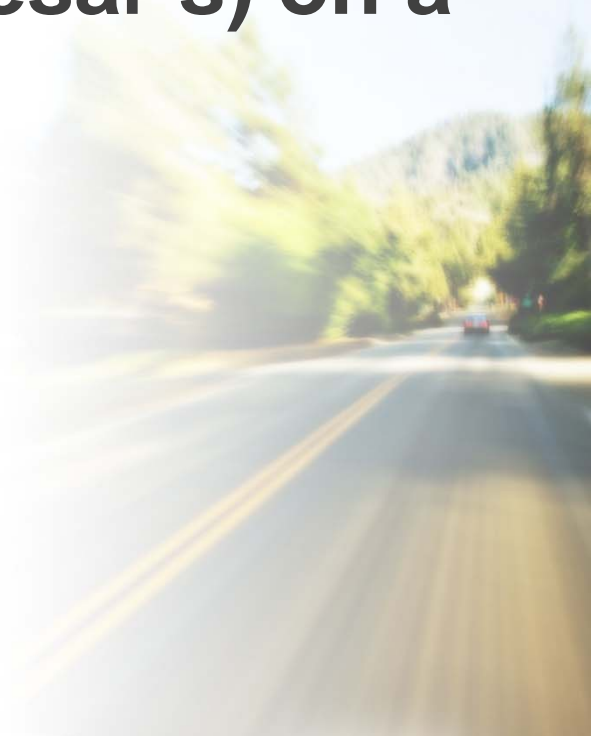
28%    D. 46



## Safety Trivia Question 5

Which of these spellings was not used to spell “Caesar” (as in Little Caesar’s) on a crash report in 2015?

- 16% ✓ A. Cezar
- 43% B. Caesare
- 29% C. Caesar
- 12% D. Ceazar

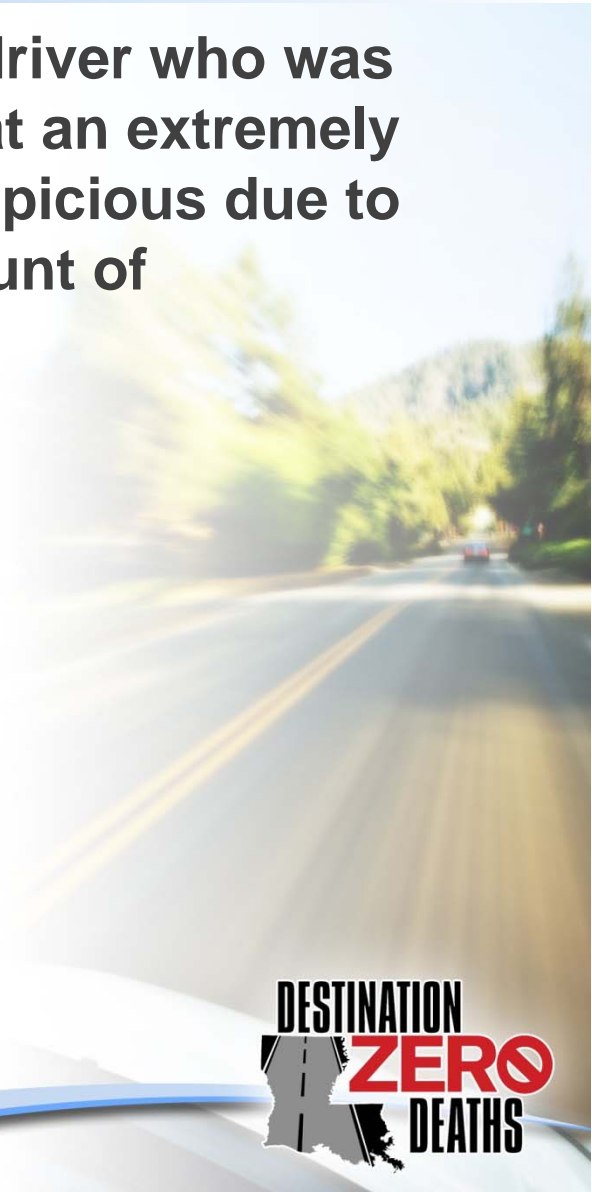


# Safety Trivia Question 6

At a crash scene, an officer pointed out the driver who was standing on the shoulder \_\_\_\_\_ at an extremely rapid rate. The officer wrote “I found this suspicious due to the time of day, the speed and the large amount of \_\_\_\_\_.”

What was the driver doing?

- 48% A. Vomiting
- 22%  B. Eating potato chips
- 22% C. Smoking cigarettes
- 9% D. Drinking soda

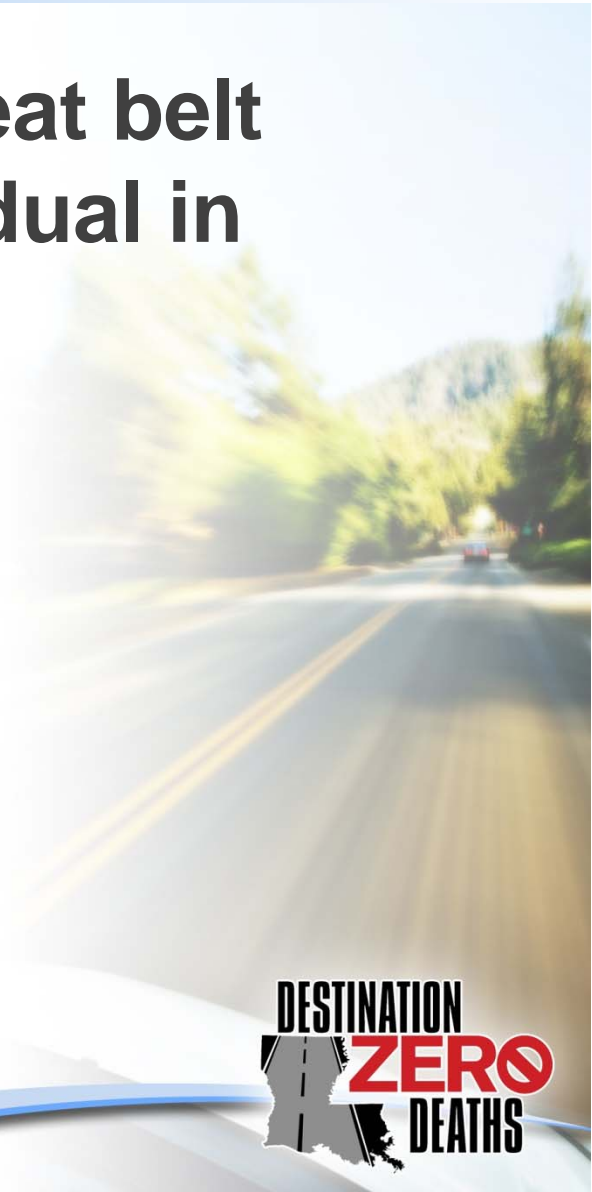


## Safety Trivia Question 7

---

What is the record for most seat belt tickets received by one individual in Louisiana?

- 1%     A. 6
- 16%    B. 8
- 36%    C. 13
- 47% ✓ D. 16






# Participant Leaders

Points	Participant	Points	Participant
6	6		
4	30		
4	33FBA9		
4	3406CA		
4	341044		

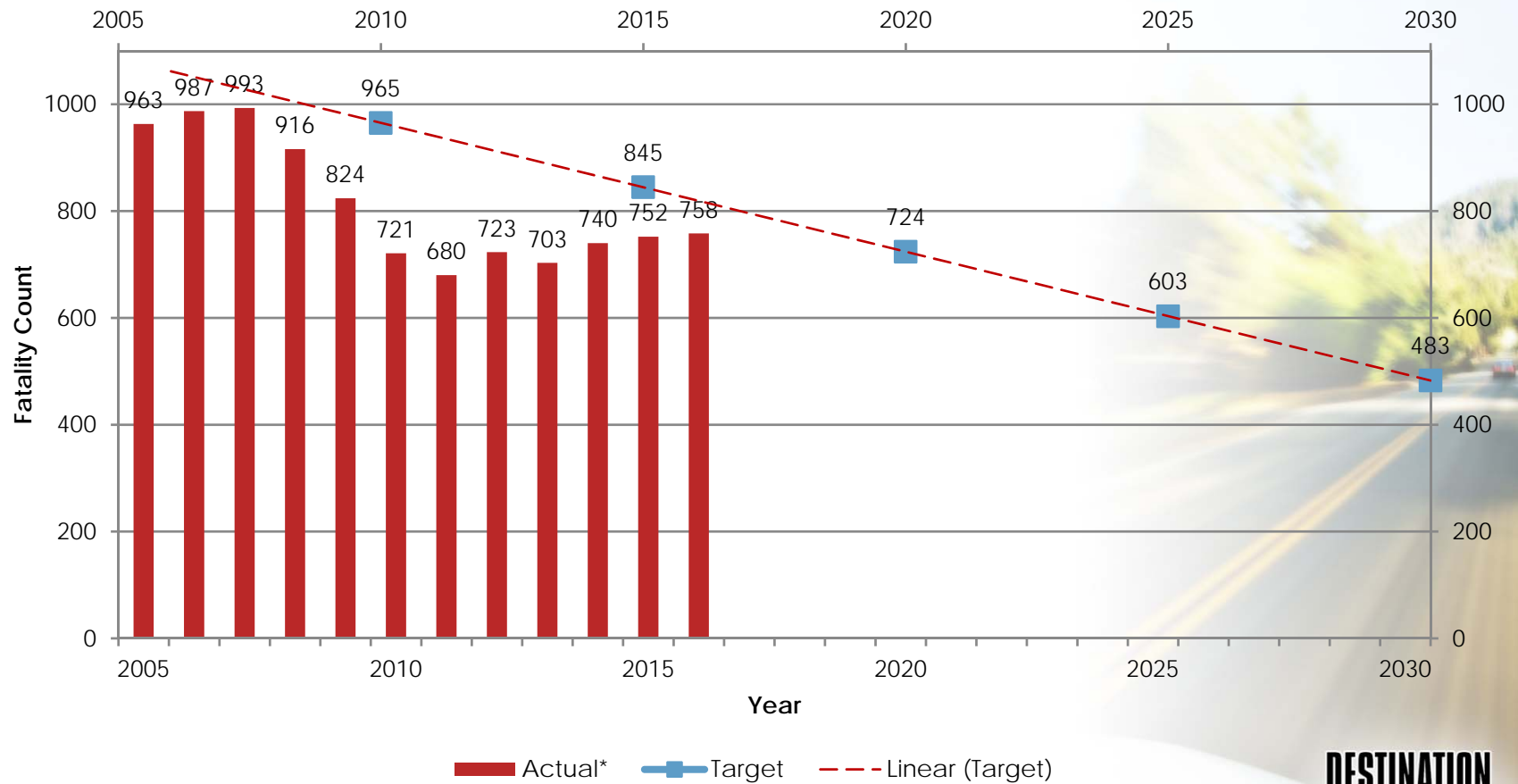
# STRATEGIC HIGHWAY SAFETY PLAN



**DESTINATION  
ZERO  
DEATHS**

# State of Traffic Safety

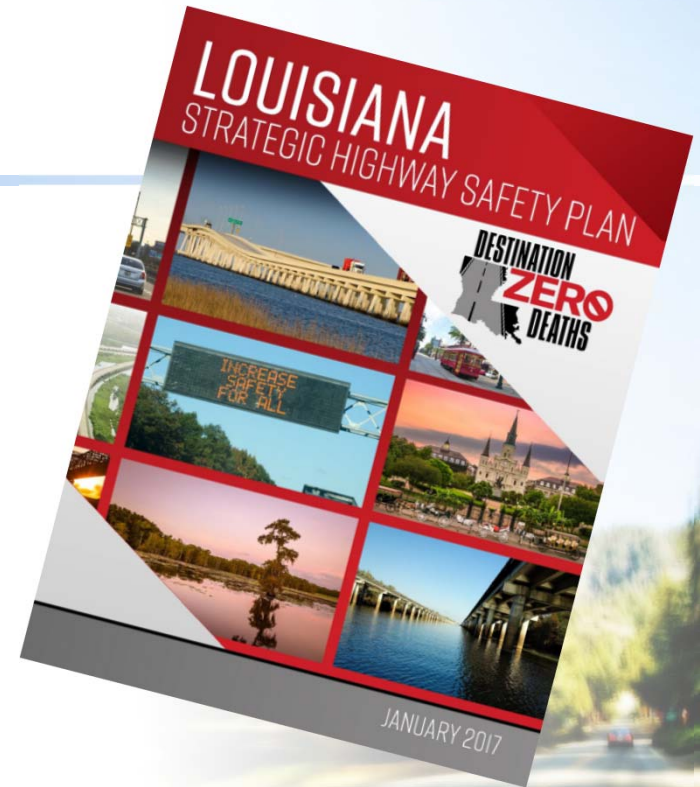
## Actual vs Target Fatality Counts



# SHSP Update 2017

Strategic, multi-stakeholder plan that sets goals and strategies to reduce highway deaths and injuries:

- Statewide, multimodal highway safety plan
- Coordinated framework for reducing deaths and serious injuries
- Involvement of Federal, state, local, and private sector stakeholders: 4Es
- Required to be updated every five years



# The Louisiana Approach

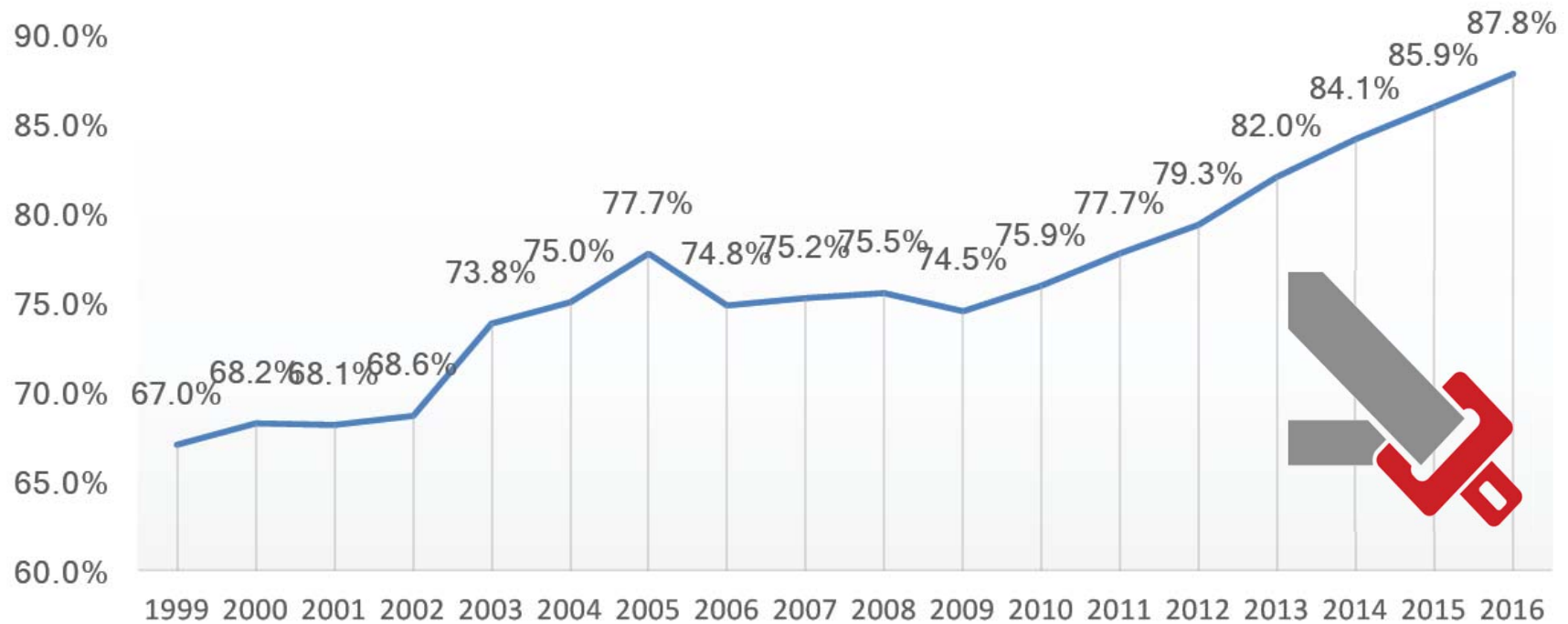


**The Louisiana Success Story**



# Good News

## Safety Belt Usage

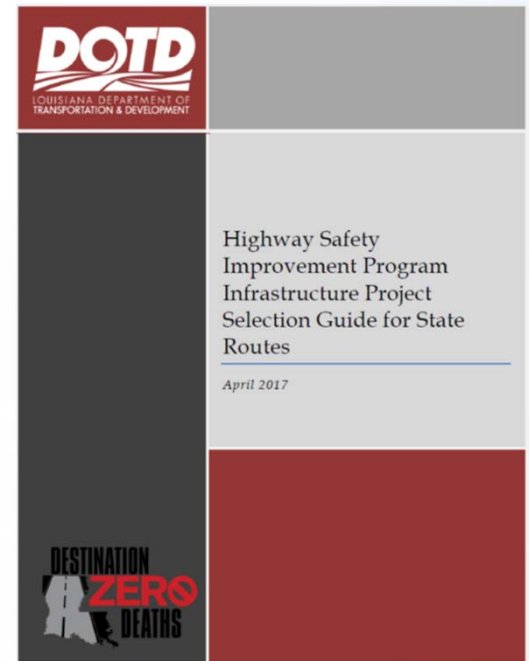


Increased the fine for not wearing a seat belt from \$25 to \$50



# Key Accomplishments

- Data-Driven HSIP Project Selection Processes
  - » Project Evaluation Forms
  - » Local Road Safety Program
  - » Safe Routes to Public Places Program
- Cell phone prohibitions for new drivers
- Rewrite of DWI laws
- Expanded educational campaigns
- Complete Streets Policy



# Regional Coalitions



**Louisiana SHSP  
Regional Coalitions**





# Emphasis Areas



*Impaired Driving*



*Occupant Protection*



*Crashes Involving  
Young Drivers*



*Infrastructure and  
Operations*



*Distracted Driving*

# Teamwork!




Regional Safety Coalitions  
Organizations

Metropolitan Planning

# AASHTO Strategy



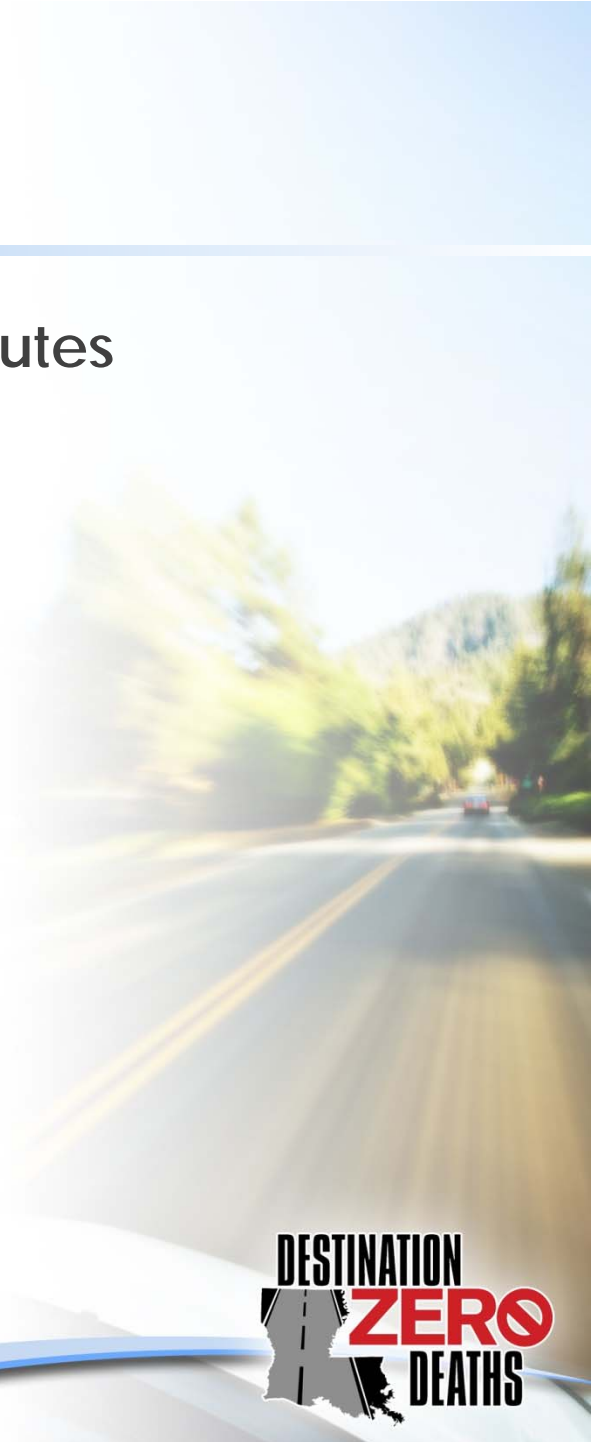
# HIGHWAY SAFETY IMPROVEMENT PROGRAM

A blurred photograph of a highway with yellow double lines, viewed from a driver's perspective. The background is a clear blue sky. In the bottom right corner, there is a graphic of a road sign with a white background and a black border, featuring a silhouette of the state of Mississippi.


**DESTINATION  
ZERO  
DEATHS**

# Recent Changes


- **HSIP Project Selection Guide for State Routes**
  - » Statistically rigorous network screening
  - » Standard Stage 0 Evaluation Form
- **Local Road Safety Program**
  - » Project proposal scoring
  - » Top 20 Parish Local Road Crash Data Profiles
- **Safe Routes to Public Places Program**
  - » Project proposal scoring
  - » Focused on non-motorized users



# Stage 0 Evaluation Form



**Louisiana Highway Safety Improvement Program**  
**State Infrastructure Projects**  
**Stage 0 Evaluation Form**



---

**Project Title:** LA 600 Road Diet

**Route:** LA 600 / Rocky Road

**Parish:** Marshmallow

**DOTD District:** 02

**Roadway Classification:** Urban 4-Lane Undivided

**Control Section:** 123-45

**Log-Mile Begin:** 0.00

**Log-Mile End:** 2.00

**Average Annual Daily Traffic:** 10,000 vehicles/day

**Total Estimated Costs:** \$200,000

**Improvement Category:** Roadway

**Subcategory:** Roadway narrowing (road diet, roadway reconfiguration)

---

**Stage 1 Recommendation:** ADVANCE TO STAGE 1 Include in HSIP FY 19/20

HOLD Comments need to be addressed

SHELVE Not considered a priority safety project at this time

**Submitted by:** Ben & Jerry Johnson, District 02      **Reviewed by:** Shebet Smith, Highway Safety

**Date:** 7/4/16      **Date:** 8/4/16

---

**STEP 1: PRE-REQUISITES FOR EVALUATION (Check all that apply)**

1) Purpose & Need focused on Safety	<input checked="" type="checkbox"/>
2) Aligned with Strategic Highway Safety Plan (SHSP) Emphasis Areas	<input checked="" type="checkbox"/>
3) High Potential for Safety Improvement (PSI)/Abnormal OR: Systemic Approach (Risk factors identified through data analysis) AND/OR: Benefit cost ratio > 1	<input checked="" type="checkbox"/>
4) Safety Effectiveness (Does the recommended alternatives address crash history or potential for reducing crashes?)	<input checked="" type="checkbox"/>

---

STEP 2: SAFETY EVALUATION FACTORS	Weight	Rating*	Total Earned Points	Total Potential Points	NOTES
<b>Crash History</b>					
High Potential for Safety Improvement (PSI) or Abnormal ( <i>All Crashes</i> )	5	●	4	20	
High Relative Severity ( <i>Fatal &amp; Injury Crashes</i> )	5	●	4	20	
High Probability of Over-represented Crash Types	5	●	4	16	
<b>Potential Safety Risks based on Existing Condition</b>					
Roadway Geometric Issues	2	●	4	8	
Access Management Challenges	2	●	4	8	
Pedestrian & Bike Considerations	2	●	4	8	Reclaimed pavement will be used for bike lanes
<b>Potential Safety Risks Reduction based on proposed project scope</b>					
Safety Effectiveness (Does the recommended alternatives address crash history or potential for reducing crashes?)	5	●	4	20	
Implementing Project Appropriate Proven Safety Countermeasures ( <i>Check those that apply</i> )	5	●	4	20	
<input type="checkbox"/> Safety Edge					
<input type="checkbox"/> Roundabouts					
<input type="checkbox"/> Corridor Access Management					
<input type="checkbox"/> Backplates with Retroreflective Borders					
<input type="checkbox"/> Longitudinal Rumble strips & stripes 2 lane roads					
<input type="checkbox"/> Enhanced Delineation & Friction for Horizontal Curves					
<input type="checkbox"/> Medians & Pedestrian Crossing Islands (Urban & Suburban areas)					
<input type="checkbox"/> Pedestrian Hybrid Beacon					
<input checked="" type="checkbox"/> Road Diets (Roadway Reconfiguration)					
<i>BCWIS, RSA, HSM Analyses (5 points for each)</i>			10		
<b>SAFETY EVALUATION SCORE</b>			130	120	
Safety Benefit Cost Ratio	5	●	4	20	BCR=3.5
Stakeholder Support (District, MPO, LPA, Regional Safety Coalition)	3	●	4	12	See Attached letter from Safety Coalition & Mayor of Napaolitan
Sponsor's commitment to delivering previous HSIP projects	3	●	4	12	
Right-of-Way Required	3	●	4	12	No RW required
Utility Relocation(s) Required	3	●	4	12	No utility impacts
Construction Cost	2	●	4	8	Construction cost = \$150,000
Other (Environmental Impacts, Permitting, Railroad Constraints)	2	●	4	8	
Consistent with plans for other nearby projects	2	●	4	8	
<b>FEASIBILITY EVALUATION SCORE</b>			92	92	
<b>TOTAL SCORE</b>			222	212	

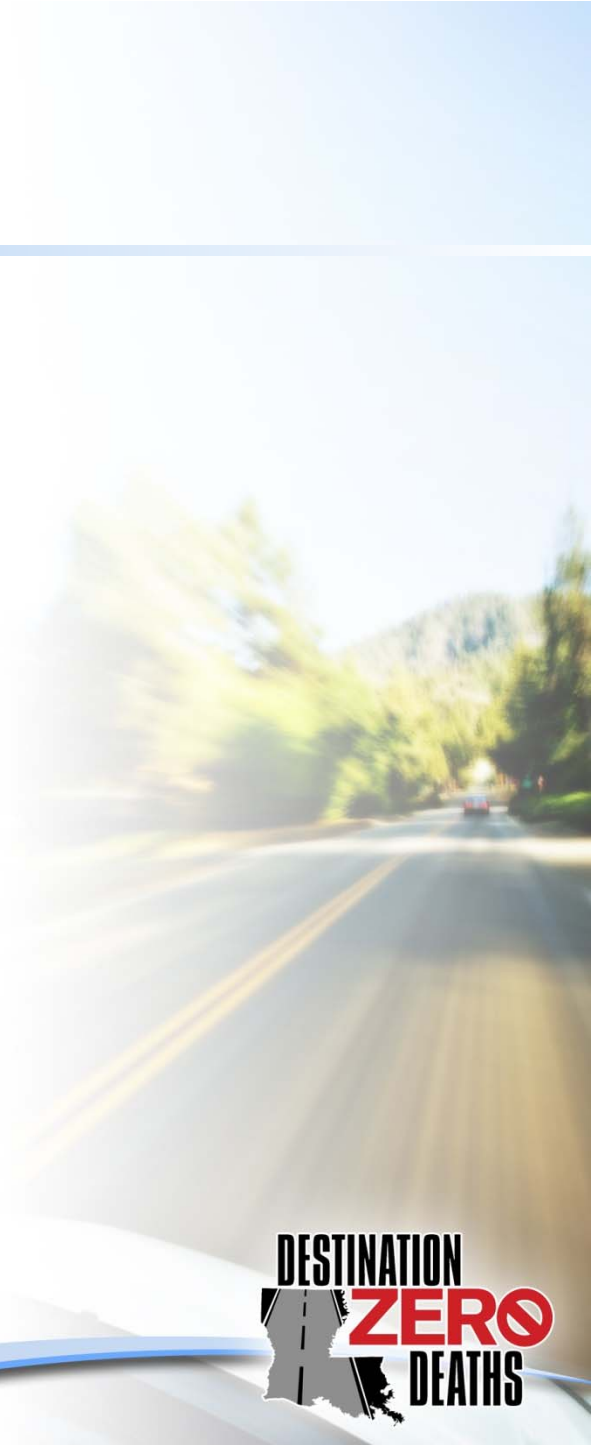
Safety Evaluation Factors

Feasibility Evaluation Factors



# Next Steps

- Life Cycle Benefit-Cost Analysis Tool
  - » Planning Level Cost Estimates (LTRC)
  - » FHWA Pooled Fund Study
- Design Report
- Software Acquisition
- Evaluations/LaSET



# Key Focus Areas

- Roadway Departure

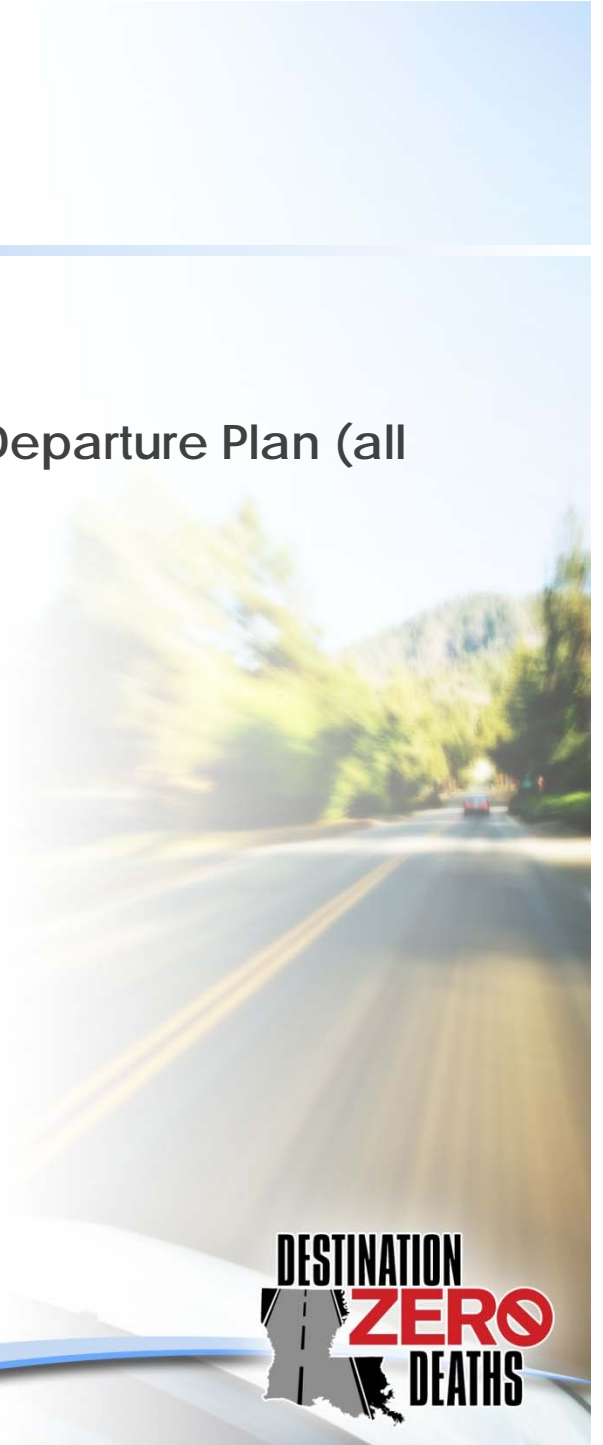
- » EDC-DDSA + Focused Approach = Roadway Departure Plan (all public roads)

- Intersections

- Non-Motorized Users

- » New Orleans

- » Baton Rouge





# Roadway Departure Projects



# Roadway Departure Projects



# Intersection Projects

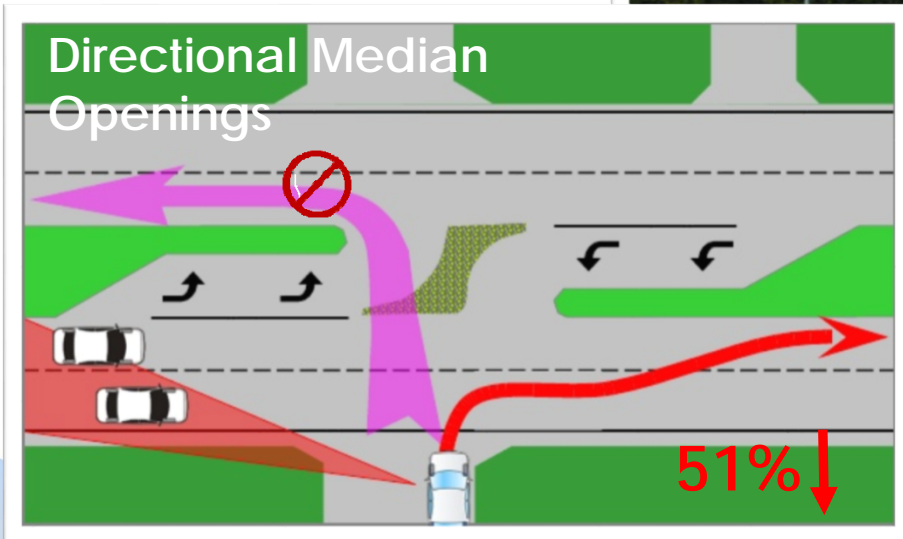


Roundabouts



Turn Lanes

# Intersection Projects

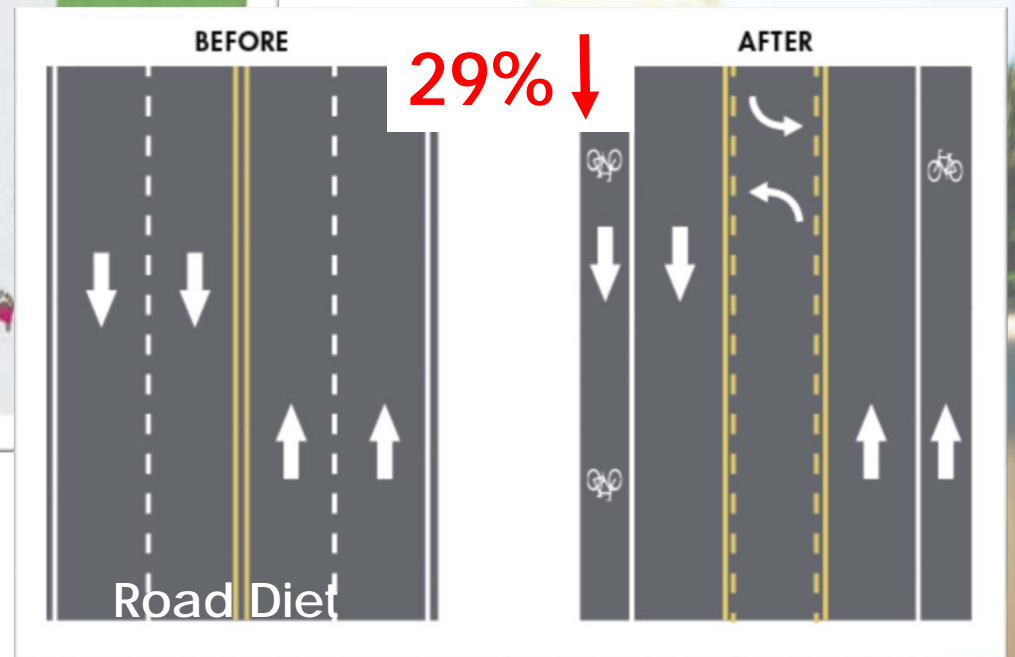


DESTINATION  
**ZERO**  
DEATHS


# Non-Motorized User Projects



# Non-Motorized User Projects

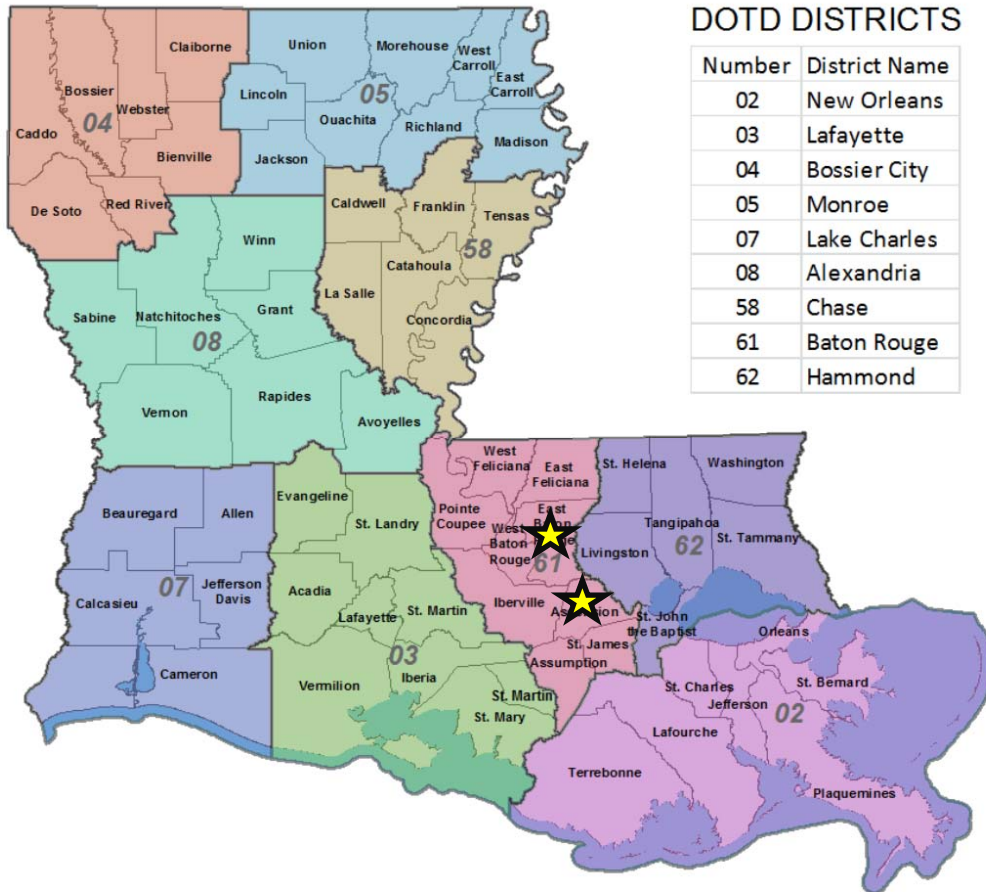


# DIST 61 SAFETY INVESTMENT PLAN



**DESTINATION  
ZERO  
DEATHS**

# District 61 Background



DOTD DISTRICTS

Number	District Name
02	New Orleans
03	Lafayette
04	Bossier City
05	Monroe
07	Lake Charles
08	Alexandria
58	Chase
61	Baton Rouge
62	Hammond

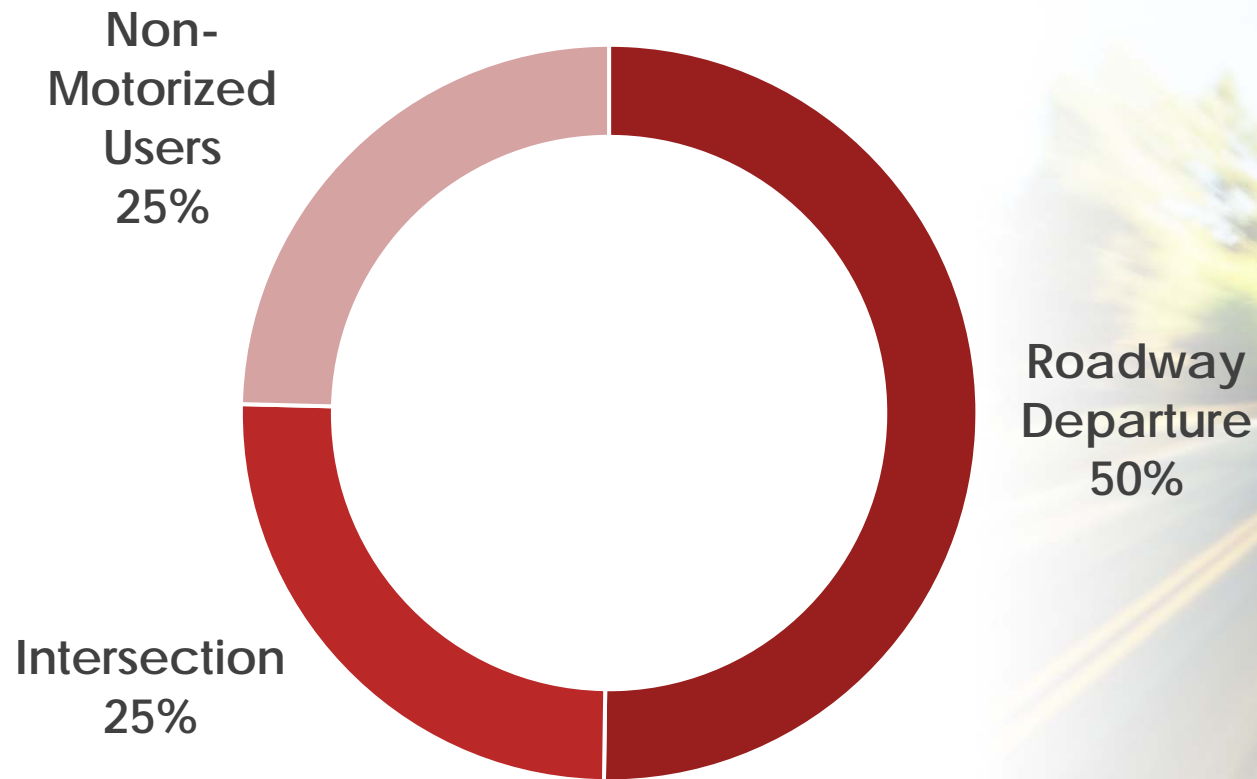
2013 to 2015  
 16% of fatalities  
 17% of serious injuries  
 44 pedestrian fatalities  
 7 bicyclist fatalities  
 2 Top 20 Parishes





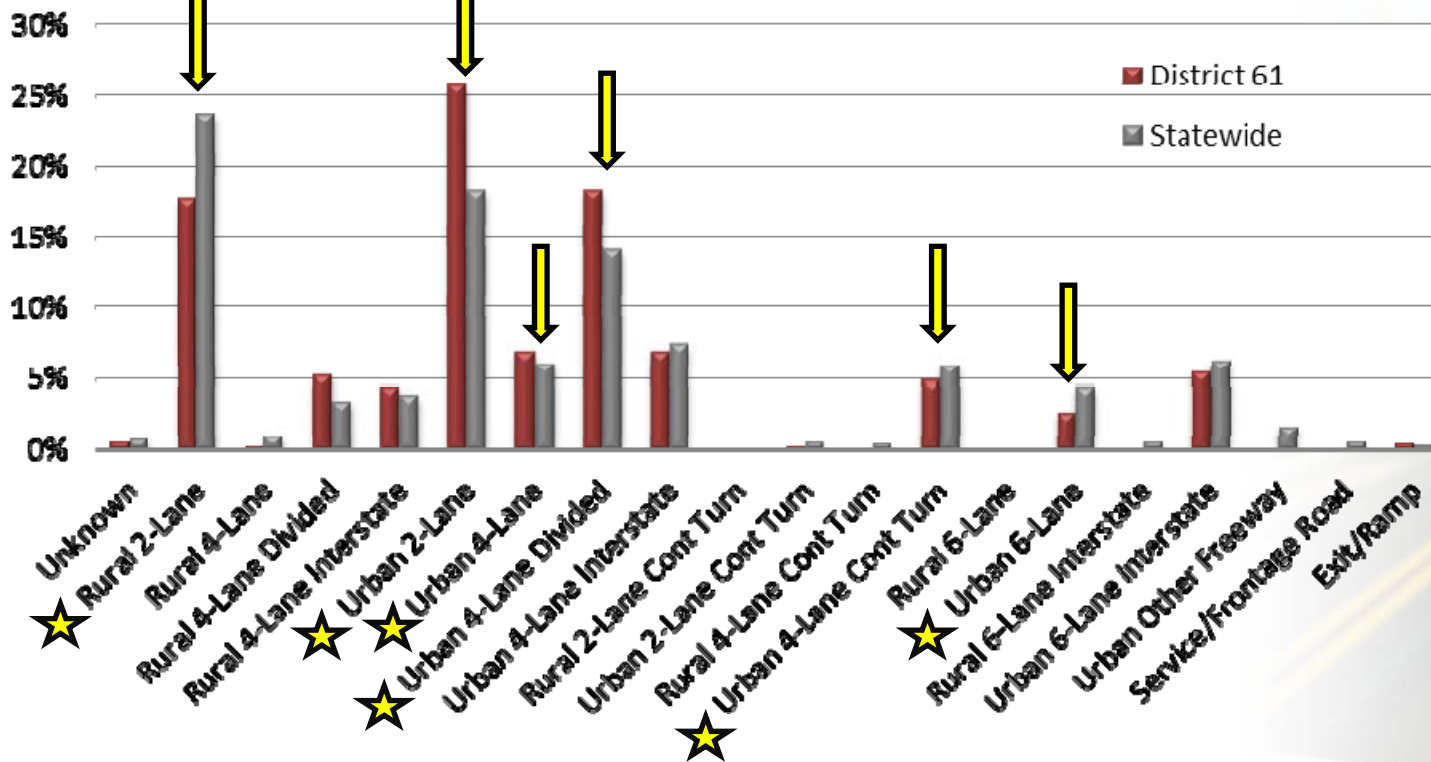
# SHSP Emphasis Area Comparison

Fatalities and Serious Injuries



# High Level Data Analysis

Percentage of Fatal and Severe Crashes by Highway Class (2011-2015)



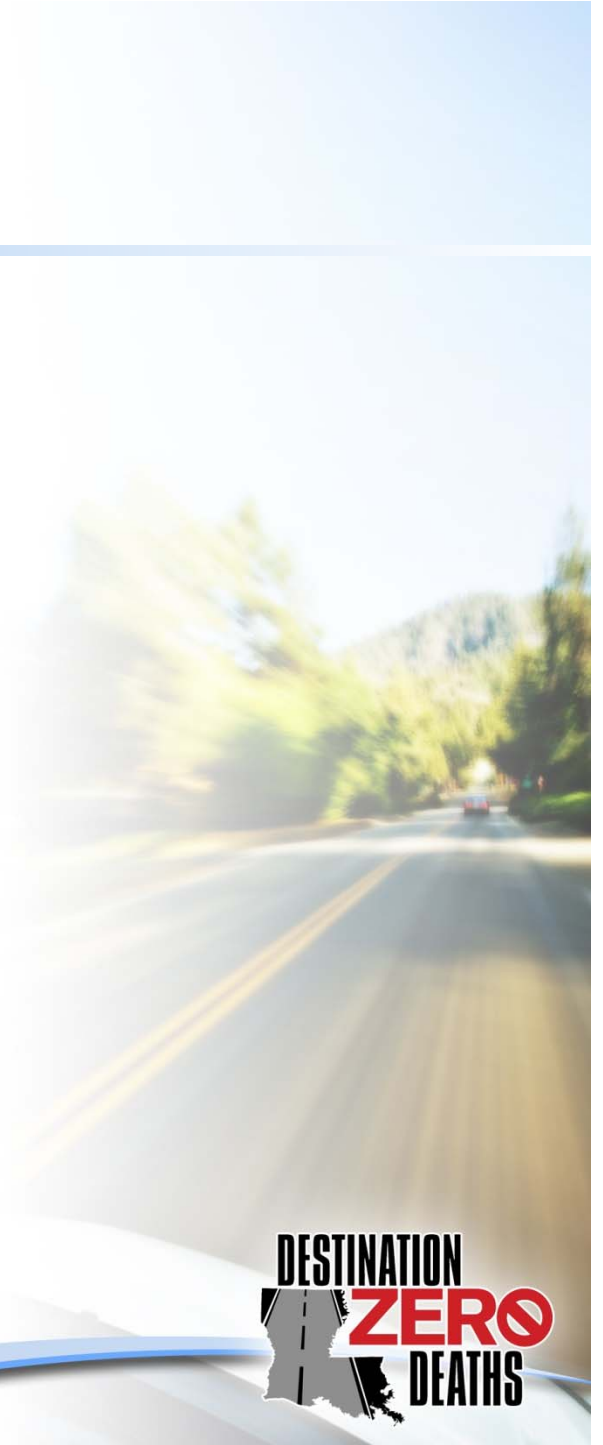
# Resources/Tools

- [High PSI Segments List](#)
- [Road Diet Candidate List](#)
- [Roundabout Candidate List](#)
- [Abnormal Intersections List](#)
- [Local Road Safety Profile](#) (EBR)
- [Pedestrian-Bicycle Safety Action Plan](#) – under development for Baton Rouge

# Resources/Tools

---

- CAT Scan
- Roadway Triage
- CMF Clearinghouse
- FHWA Proven Safety Countermeasures
- [www.pedbikesafe.org](http://www.pedbikesafe.org)
- ITE Traffic Engineering Handbook



# Potential Project Sites

Location	Significant Crash Types	Potential Countermeasure(s)	Potential Reduction in Crashes	Est. HSIP Funds	Max. B/C Ratio	SHSP Emphasis Area	Program
LA 30/Nicholson Drive	Serious Injuries, Collision with Pedestrian, Wet-Surface, Rear-Ends	Widening, High Visibility Crosswalks, Ped Signals, Ped Refuge Islands		\$3 Mil		Intersections & Non-Motorized Users	SA
LA 67/Plank Road	Serious Injuries, Head-Ons, Left Turn-f, Right Turn, Roadway Departure, Collision with Pedestrian	Road Diet, High Visibility Crosswalks, Ped Signals, Bike Lanes, Enhanced Striping	47% (CMF 2841)			Intersections & Non-Motorized Users	SA
Ardenwood	Fatal, Serious Injuries, Left Turn-f, Fixed Object	Road Diet, Traffic Calming/Speed Management, Pedestrian Facilities	47% (CMF 2841)			Roadway Departure & Non-Motorized Users	LRSP
LA 42 @ Ben Hur	Rear Ends, Right Angle	Protected Only Left Turn Phasing	55%	n/a	n/a	Intersections	n/a
LA 327/River Rd @ Brightside	Head-On, Right Angle, Left Turn-f, Right Turn	Roundabout	72% (CMF ID 206)			Intersections	SA



# Coordination Efforts

- HQ Safety
- Capital Region Transportation Safety Coalition I&O Team
  - » East Baton Rouge Parish Subcommittee
  - » Ascension Parish Subcommittee
  - » DTOE co-chairs
- MPO
- Local Officials
- LTAP



# Feedback Request

- How many of you participate in a regional safety coalition?
- How many of you would be interested in getting one of these developed for your jurisdiction?
- How many of you think you could do this on your own with some technical assistance?
- How many of you would like assistance with Stage 0 development?
- How many of you think it should be a requirement for safety funding?

**SHSP + HSIP = 0**





# Questions

April Renard, P.E., PTOE  
Department of Transportation and Development  
[april.renard@la.gov](mailto:april.renard@la.gov)

Jes DeVille, E.I.  
Department of Transportation and Development  
[jessica.deville@la.gov](mailto:jessica.deville@la.gov)

