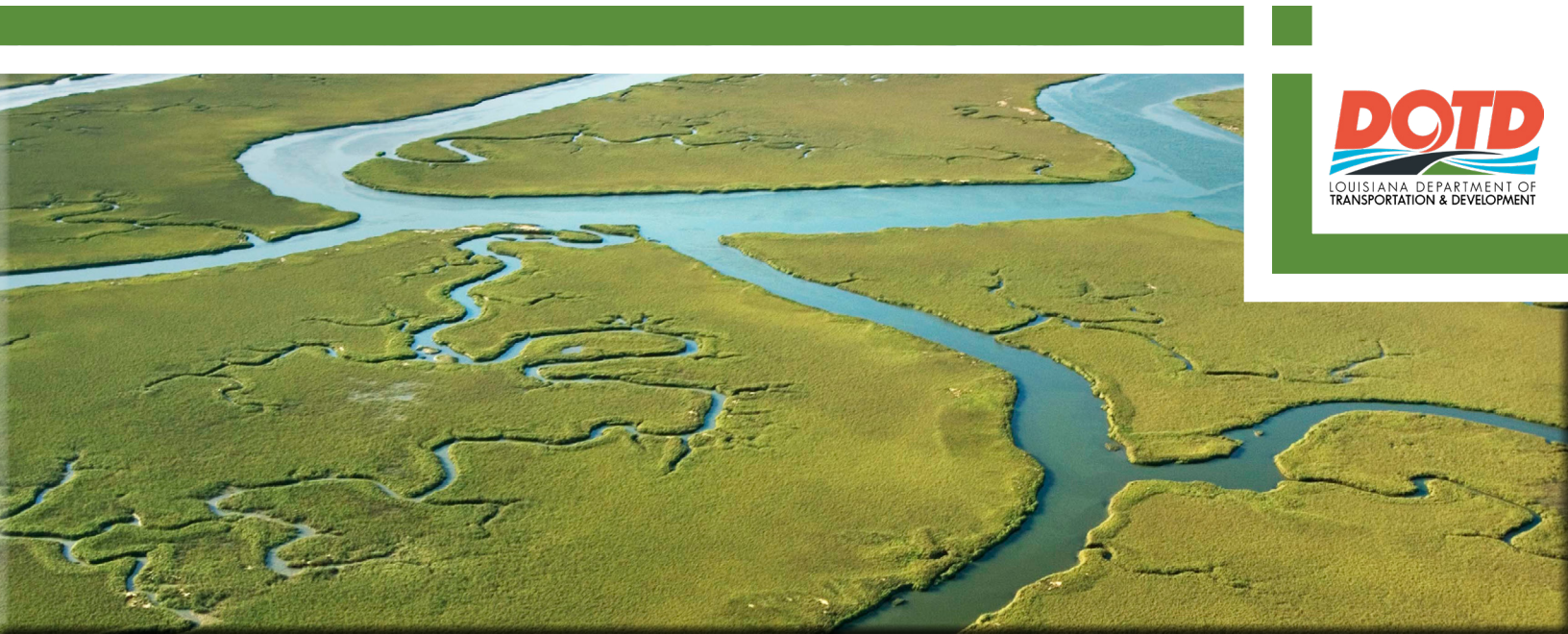


RESOURCES



OBTAINING PERMITS AND RESOURCES FOR WILDLIFE MITIGATION

LOUISIANA



DOTD
LOUISIANA DEPARTMENT OF
TRANSPORTATION & DEVELOPMENT

IDENTIFYING WILDLIFE HAZARDS AT YOUR AIRPORT

What are your primary concerns?

*Click the **bold text** above each paragraph for additional information and website links.*

Nuisance Animals

The link above provides guidance for obtaining a Nuisance Animal Control Permit. A (NACP) provides airport operators the legal authority to take nuisance animals during closed seasons on airports where wildlife hazards are prone to cause significant damage, injury, or death. Permittees are required to obtain a valid hunting and trapping license. Permits are to be renewed annually before December 31st.

Alligators

The link above provides guidance for contacting local licensed trappers. Alligators are protected in the state of Louisiana. Alligators that become a hazard or nuisance require a licensed professional with a valid permit to be removed.

Migratory Birds

The link above provides guidance for obtaining migratory bird depredation and nesting permits to depredate hazardous birds or remove active nests of migratory birds on or near the airport. The permits are required to be renewed annually before December 31st.

Wildlife Hazard Mitigation Resources

The link above provides a variety of resources to public airport operators for mitigation and removal of wildlife hazards.



Nuisance Animals and Protected Species

Steps for Requesting Nuisance Animal Control Permit

The information within this document provides Louisiana airport operators a number of resources for requesting and obtaining wildlife mitigation permits.

Below are the steps for requesting nuisance animal control permits:

- 1** Contact Melissa Collins at mcollins@wlf.la.gov or (985) 543-4777 to request a fillable Nuisance Animal Control Permit Form.
- 2** Fill out letter of request on airport Letterhead ([see Attachments](#))
- 3** Complete release statement provided in application form
- 4** Provide airport property boundary map with clearly defined property boundaries (area controlled under permit)
- 5** Email required documents to Melissa Collins at mcollins@wlf.la.gov

Request Migratory Bird Depredation Permit

Steps for Obtaining a Permit

The U.S. Fish and Wildlife Services (USFWS) has gone to an all-new e-permit. Information for frequently asked questions can be found in the help center.

Permits, frequently asked questions, and regional contacts for migratory bird permits can be found on the USFWS website ([click here](#)), along with the Migratory Bird Depredation Permit Form ([click here](#)).

STEP 1: CREATE AN ACCOUNT

1 Register with USFWS E-Permits Log-In ([click here](#))

STEP 2: DOWNLOAD SECTION E

2 FWS Form 3-200-13 is included in this PDF's attachments.

STEP 3: COMPLETE FORM 37

3 Request Form 37 by calling USDA-WS in LA at 225-389-0229
A "Form 37" is required as part of the application process. The form is a justification / recommendation document that the USFWS uses to assess the need for your permit. The form must be submitted by you along with your application. The USFWS contracts the USDA-WS program to review migratory bird issues and complete the form.

STEP 4: SUBMIT ONLINE

4 Submit online application with Section E and Form 37.

Attention airport sponsors and managers: All publicly owned airports are exempt from \$100.00 application fee.

Wildlife Hazard Mitigation Resources Available to Public-Use Airports

Steps for Requesting Nuisance Animal Control Permit

The Louisiana Department of Wildlife and Fisheries (LADWF) has several regional offices across the state that may support both lethal and non-lethal methods of removing wildlife hazards at your airport. There are several wildlife biologists across the state that can assist with mitigable recommendations as well. Contact your regional office for these resources.

REGIONAL OFFICE	PARISHES SERVED	PHONE NUMBER
Hammond Field Office 42371 Phyllis Ann Drive Hammond, LA 70403	Ascension, East Baton Rouge, East Feliciana, Jefferson, Lafourche, Livingston, Orleans, Plaquemines, St. Bernard, St. Charles, St. Helena, St. James, St. John the Baptist, St. Tammany, Tangipahoa, Washington, and West Feliciana	985.543.4777
Lafayette Field Office 200 Dulles Drive Lafayette, LA 70506	Assumption, Avoyelles, Concordia, Iberia, Lafayette, Pointe Coupee, St. Landry, St. Martin, St. Mary, Terrebonne, and West Baton Rouge	337.262.2080
Lake Charles Field Office 1213 North Lakeshore Drive Lake Charles, LA 70601	Acadia, Allen, Beauregard, Calcasieu, Cameron, Evangeline, Jefferson Davis, Vermilion, and Vernon	337.491.2575
Minden Field Office 9961 Highway 80 Minden, LA 71055	Bienville, Bossier, Caddo, Claiborne, De Soto, Jackson, Lincoln, Red River, and Webster	318.371.3050
Monroe Field Office 368 Century Link Drive Monroe, LA 71203	Caldwell, East Carroll, Franklin, Madison, Morehouse, Ouachita, Richland, Tensas, Union, and West Carroll	318.343.4044
Pineville Field Office 1995 Shreveport Highway Pineville, LA 71360	Catahoula, Grant, LaSalle, Natchitoches, Rapides, Sabine, and Winn	318.487.5885

Trapping Resources | Trapping resources are found in some parishes across the state. Contact local highway departments for trapping resources.

LADWF - nuisance animal control operator permits | The LADWF provides these permits to individuals across the state. These individuals are licensed to provide mitigation in the parishes listed. ([click here](#))

Regulations and guidelines for removing large mammals such as feral hogs, coyotes, and armadillos. ([click here](#))