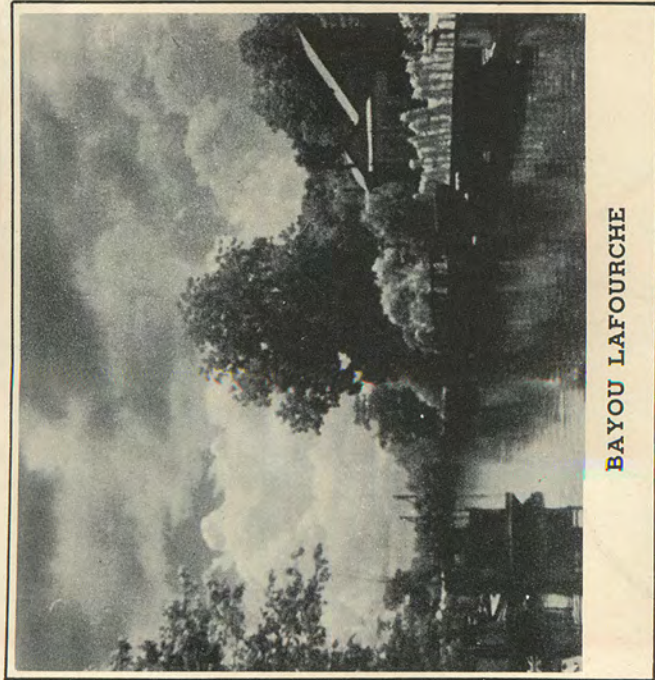
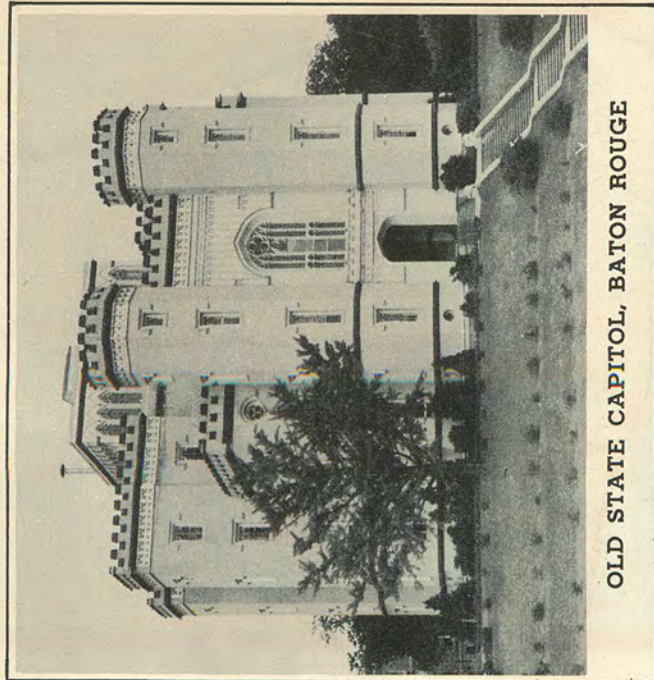




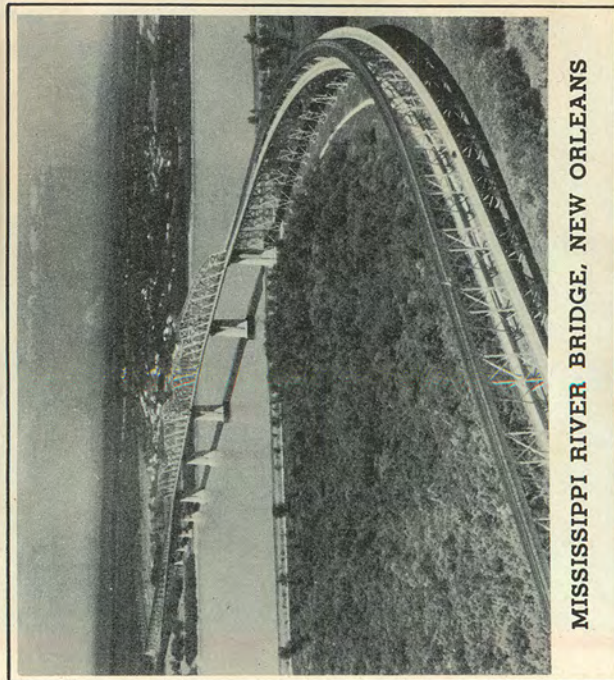
EVANGELINE OAK, ST. MARTINVILLE



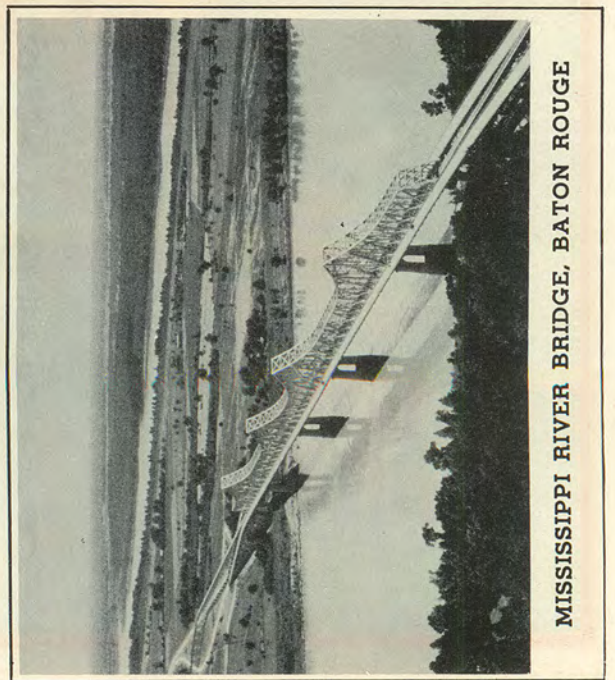
BAYOU LAFOURCHE



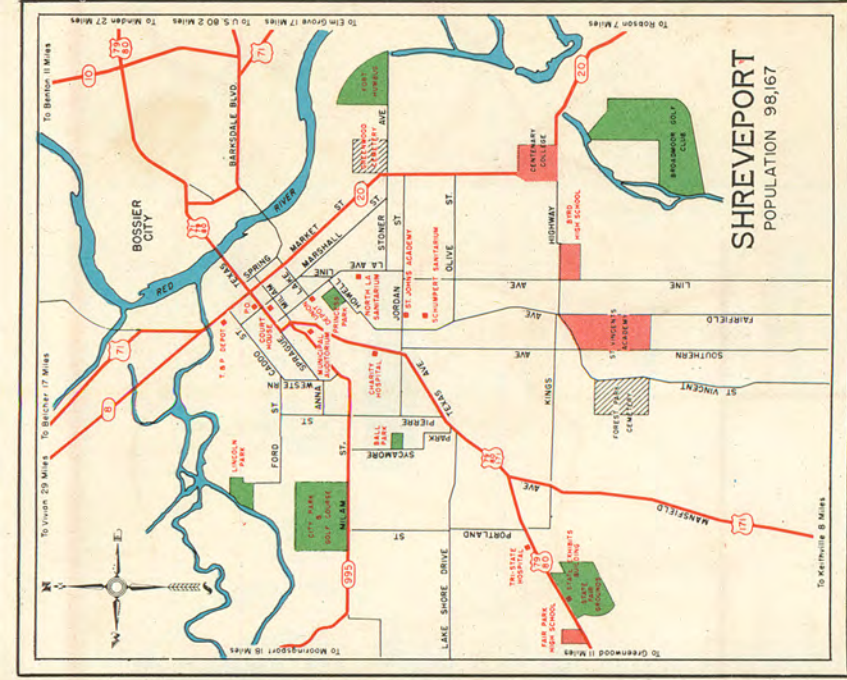
OLD STATE CAPITOL, BATON ROUGE



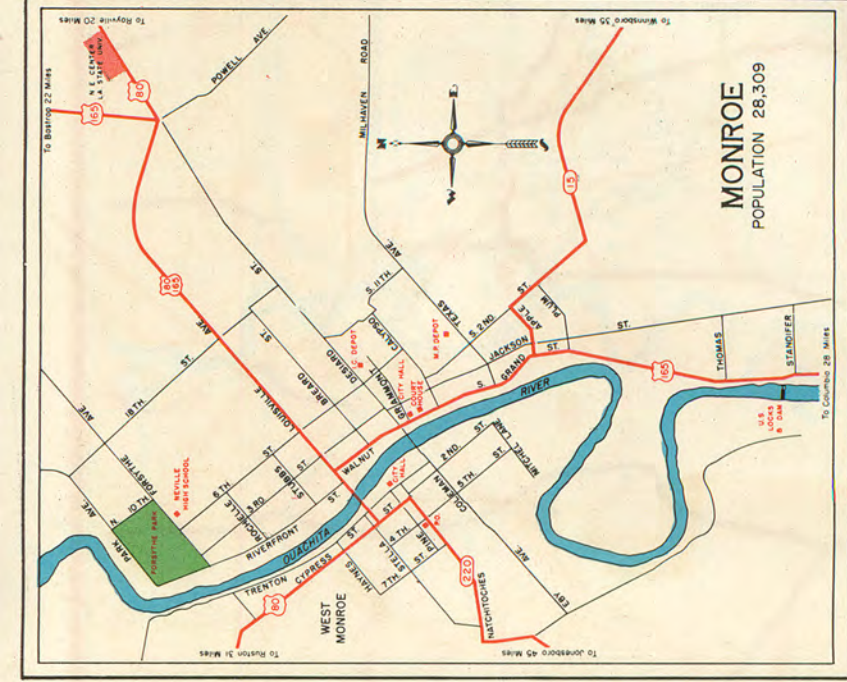
MISSISSIPPI RIVER BRIDGE, NEW ORLEANS



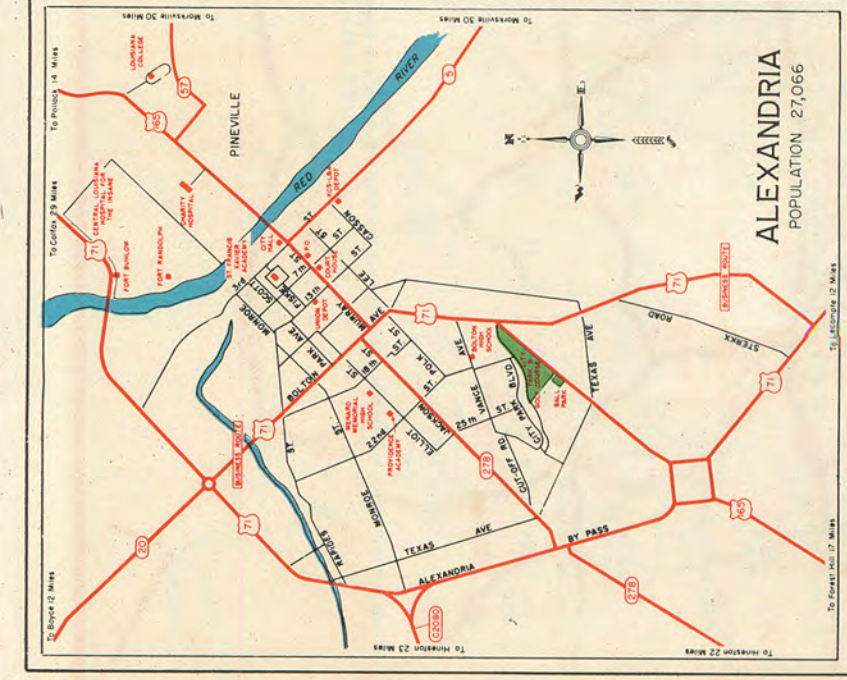
MISSISSIPPI RIVER BRIDGE, BATON ROUGE



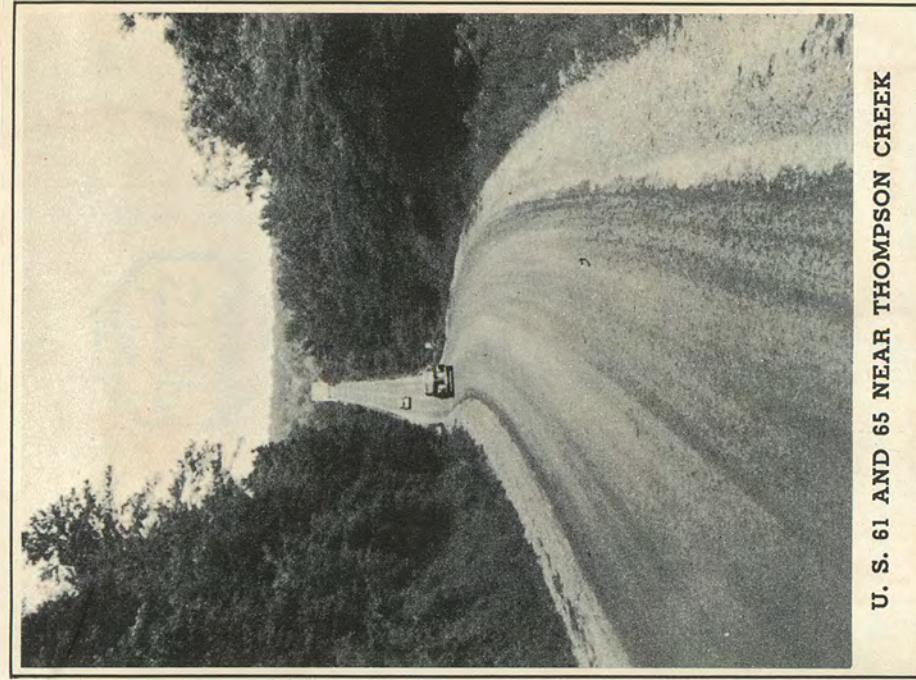
SHREVEPORT . . . the state's second city and natural distribution center of the rich and rapidly growing Ark-La-Tex market . . . Pivot City of the Central South, in the heart of vast oil and gas fields and varied resources, offers outstanding industrial, commercial and agricultural advantages . . . home of Barksdale Field, the world's largest airport.



MONROE . . . in the heart of the world's largest gas fields . . . leading trade center of Northeast Louisiana . . . Monroe also boasts of Louisiana State University's "Northwest Center," a large paper mill and bag factory, and carbon-black plants as well as other industries.

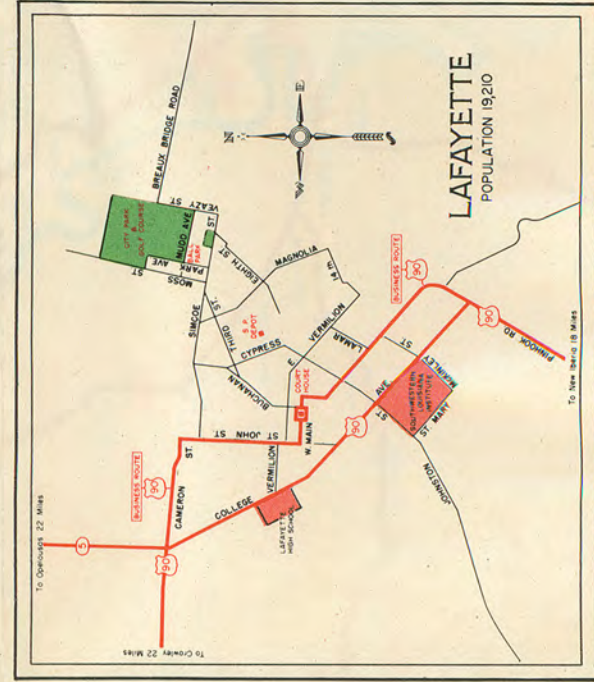


ALEXANDRIA . . . in the geographical center of the state . . . one of Louisiana's most important cities, is the focal point of the State Highway System, and is served by five trunk line railroads as well as one commercial air-line. It has many industries and is the trade center of the surrounding area of a fifty-mile radius.



U. S. 61 AND 65 NEAR THOMPSON CREEK

NEW ORLEANS . . . where the tourist will see life as it was in the colorful days of two centuries ago . . . however, you will also find modern monuments to progress, symbolical of the "Greatest City South" . . . a city that is modern in every detail. New Orleans boasts one of the finest airports in the United States . . . port and harbor improvements second to none, and a Charity Hospital that is the envy of the nation . . . Mardi Gras (Fat Tuesday) the annual frolic of fun has international fame and the Sugar Bowl Football Game on New Year's Day is now a national institution.

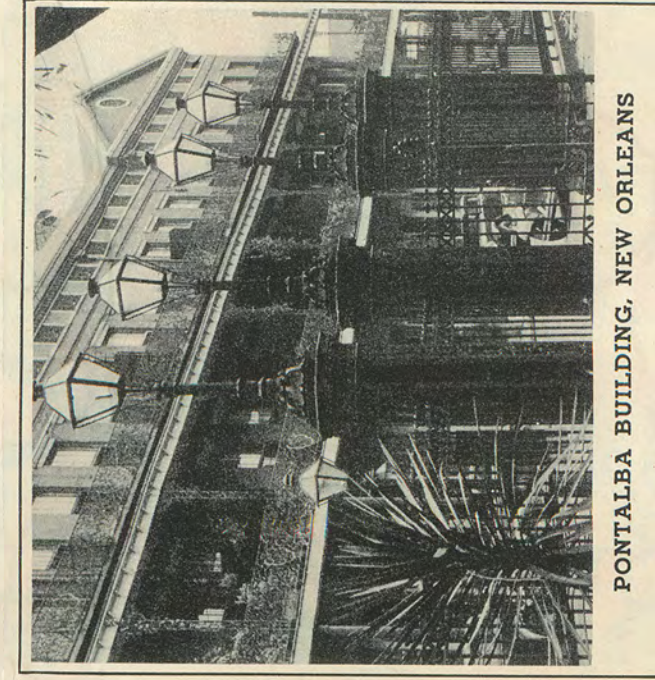
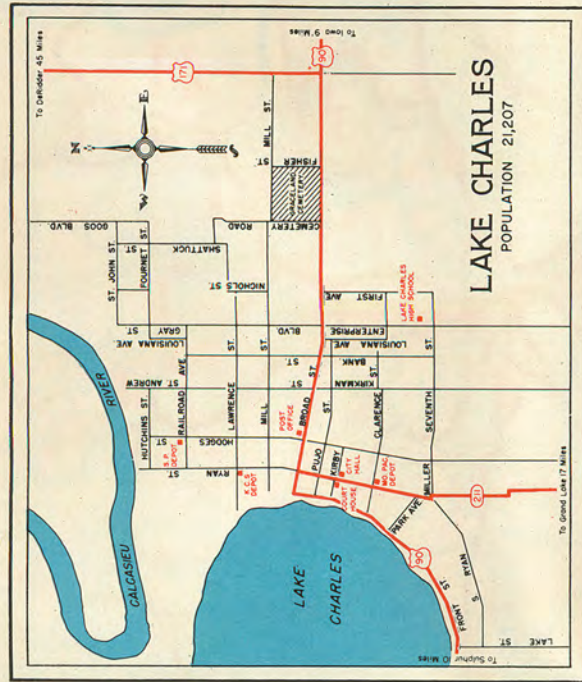


LAFAYETTE . . . in the center of the most densely populated and diversified agricultural area of South Louisiana. It is one of the most modern and up-to-date cities in the state and home of Southwestern Louisiana Institute . . . the annual Azalea Trail in March attracts thousands of visitors . . . leading industries are food processing and dehydration.

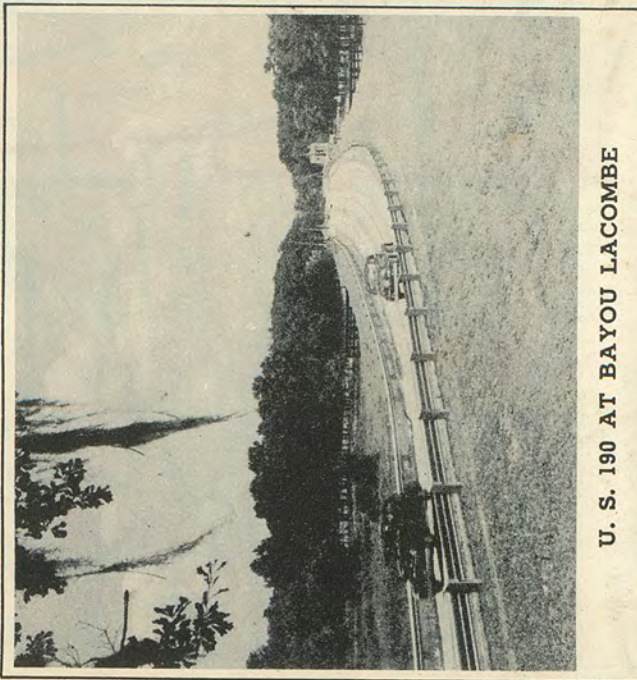


ROUTE 35, WASHINGTON PARISH

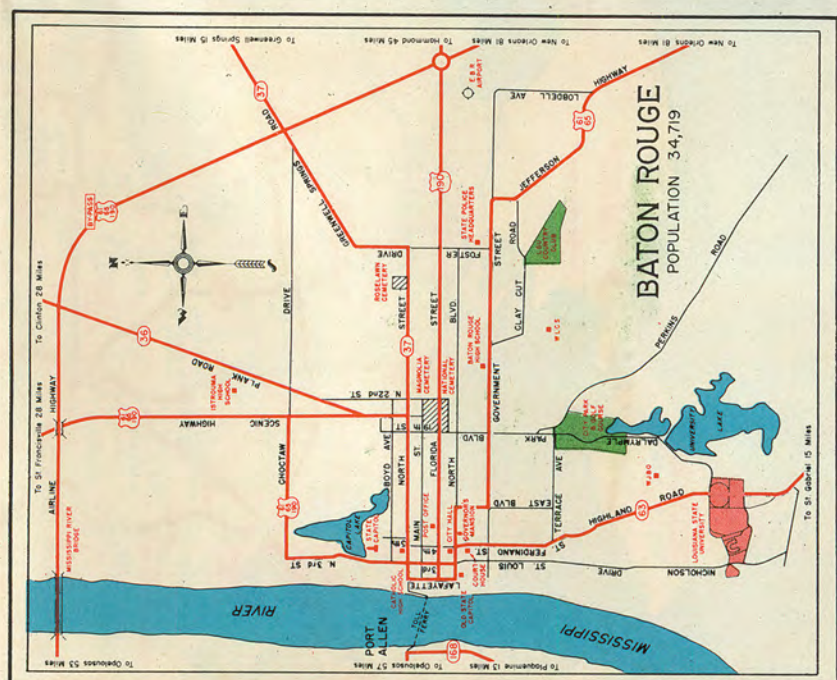
LAKE CHARLES . . . the commercial center of Southwest Louisiana, a city with all types of transportation and numerous industries, including oil refineries, rice mills, chemical plants, fertilizer, lumber, brick, concrete products and meat packing plants. The Calcasieu Ship Channel, 33 miles in length, connects Lake Charles with world wide trade.



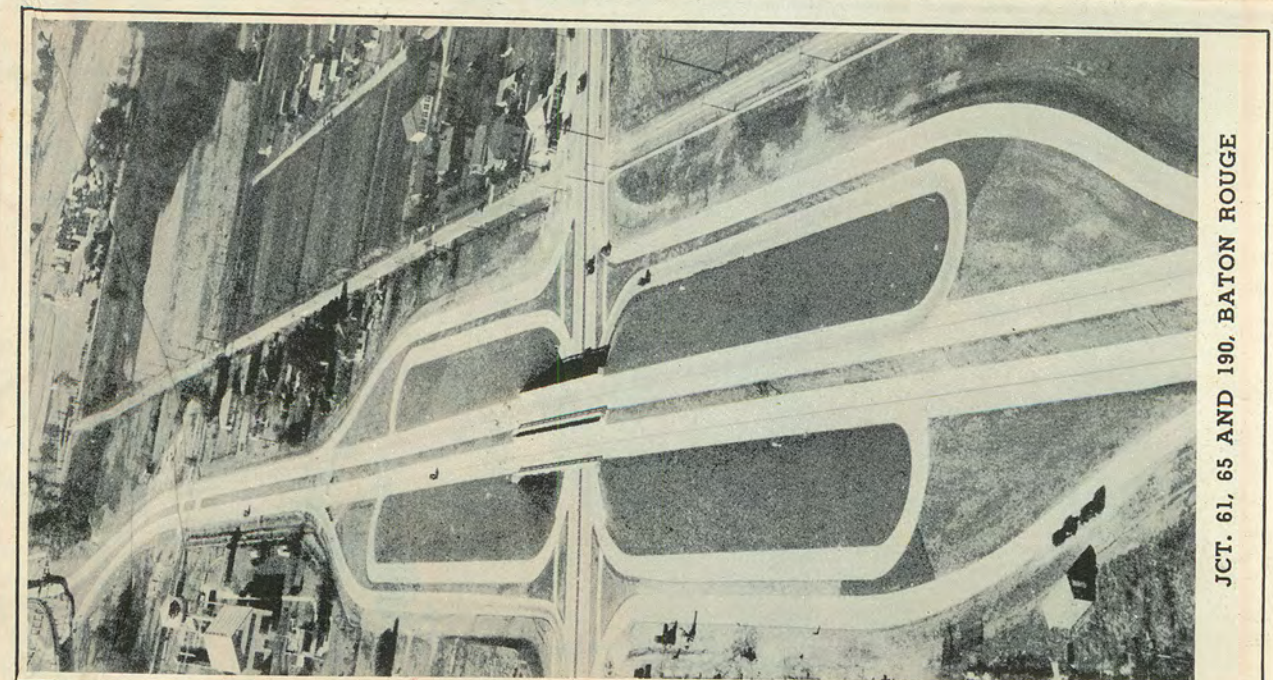
PONTALBA BUILDING, NEW ORLEANS



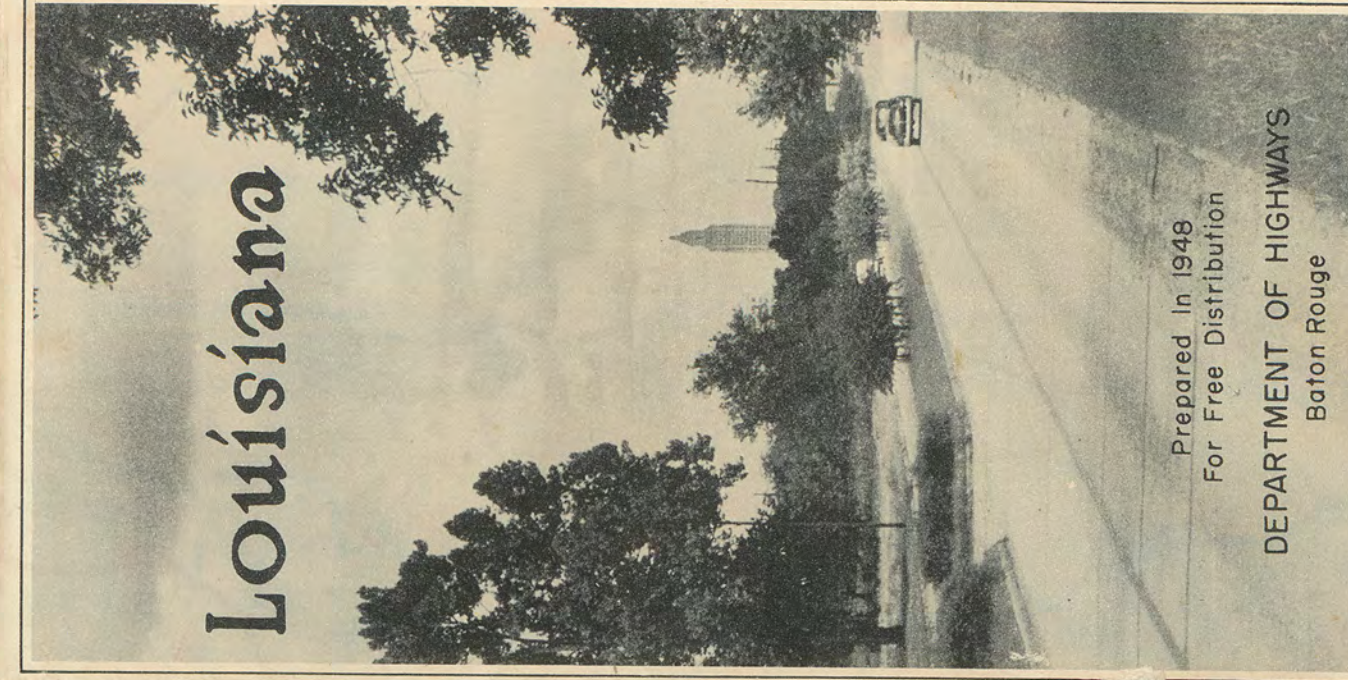
U. S. 190 AT BAYOU LACOMBE



BATON ROUGE . . . situated on the first high lands above the mouth of the Mississippi River . . . the State's third city and its capital. Baton Rouge is the site of many of the State's major industries and developments during the past ten years have been unparalleled. The 33-story State Capitol building is the tallest building in the South, and Louisiana State University with its new and magnificent buildings and enrollment of 9,000 students is the State's leading educational institution.



NEW STATE CAPITOL, BATON ROUGE



Louisiana

Prepared in 1948
For Free Distribution
DEPARTMENT OF HIGHWAYS
Baton Rouge

FOR SAFETY'S SAKE PLEASE OBSERVE THESE HIGHWAY LAWS

Do not drive at a speed greater than is reasonable and prudent with regard for existing road conditions. Do not drive while under influence of intoxicants or narcotics. Do not pass school bus while taking on or discharging passengers. Do not pass school bus while taking on or discharging passengers. Do not exceed a speed of 40 miles per hour while driving a truck. Do not drive unless you have a driver's license (except residents of states not requiring a license).

THESE SAFETY SUGGESTIONS

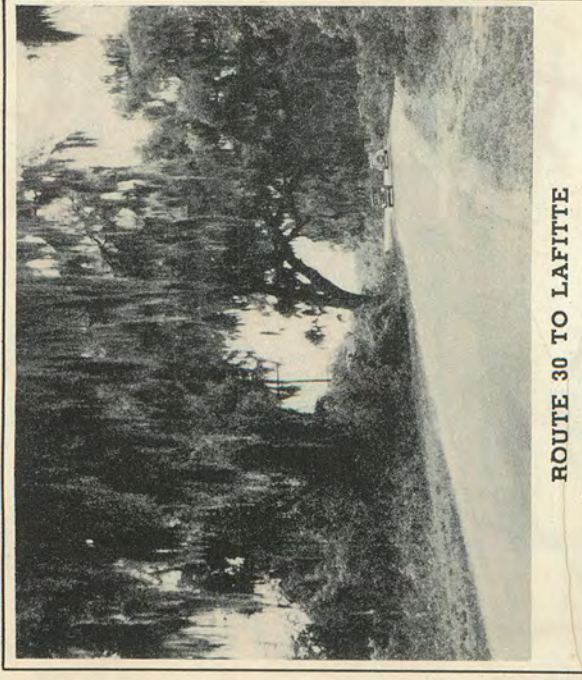
Keep to the right of the center line, except while passing. Don't overdrive the reach of your headlights at night. Let the other fellow know what you are going to do—SIGNAL. Dim your headlights when meeting another vehicle. Obey all traffic warning and stop signals. Watch out for pedestrians at all times. Apply the Golden Rule to your driving.

REPORT OF ACCIDENTS

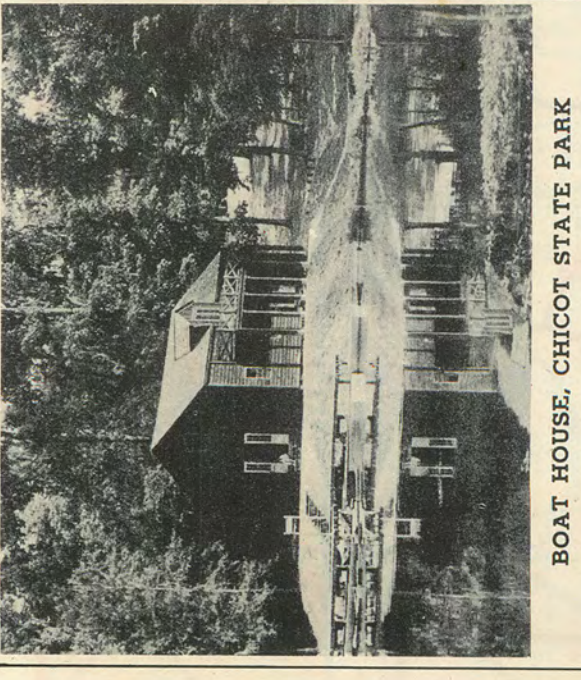
The law requires that the driver of any motor vehicle involved in an accident resulting in the death of a person or in the apparent estimate of \$25.00 or more shall within 24 hours make a report of such accident to the State Police, or if the accident happens in a city, to the police department of that city.

Listed below are the location and telephone number of State Police Stations:

Location	Tel. No.	Location	Tel. No.
Alexandria	9933	Hammond	438-J
Archie	5322	Lake Charles	9512
Baton Rouge	6141	Leesville	3414
Bogalusa	188-W	Monroe	1866
Covington	822-W	New Orleans	TEMPLE 1988
Donaldsonville	201	Opelousas	2105 & 2638
Franklin	470	Shreveport	33597
Franklinton	261	Slatkoff	392



ROUTE 106 TO LAFAYETTE



BOAT HOUSE, CHICOT STATE PARK