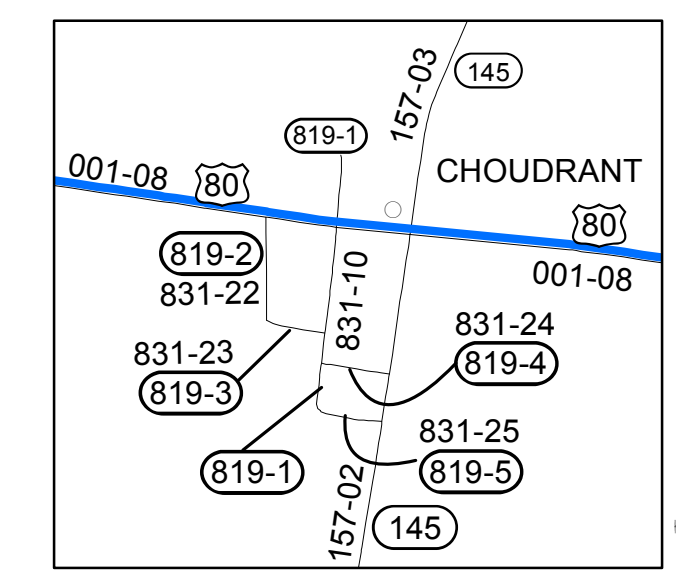
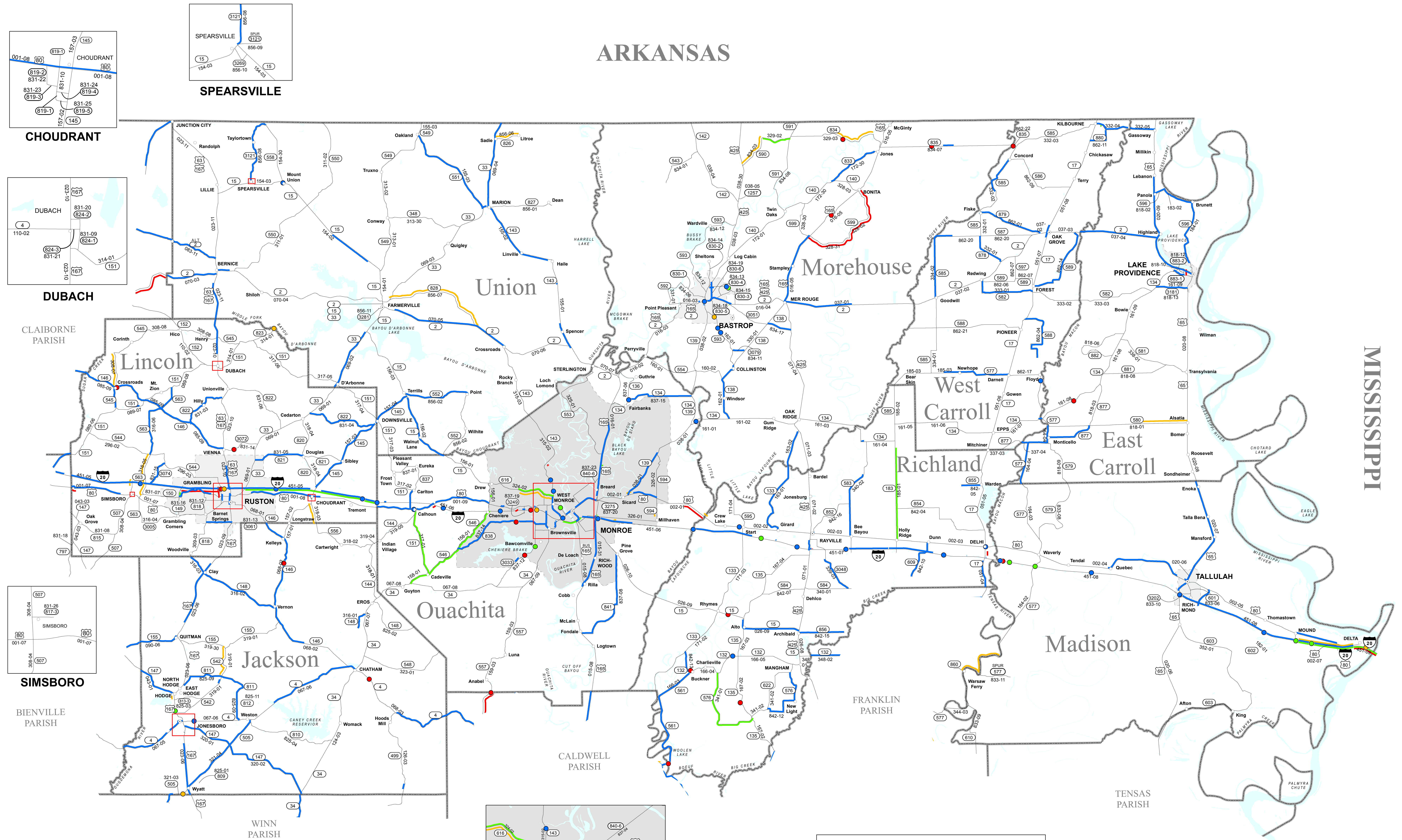
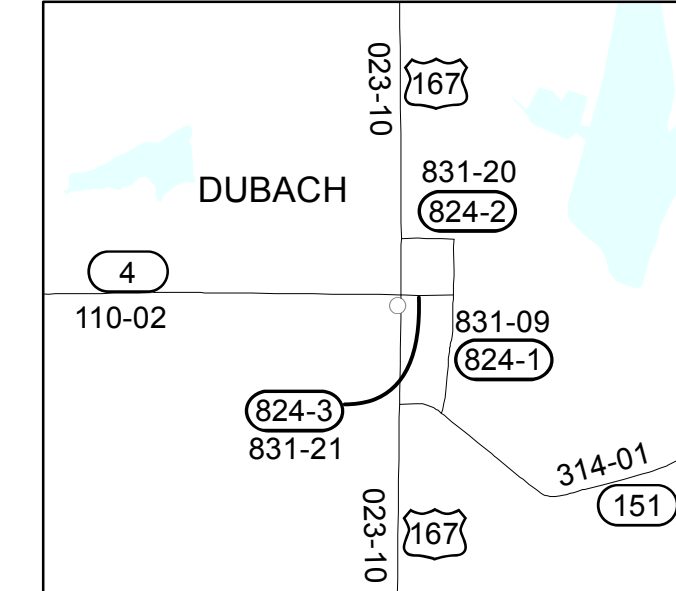


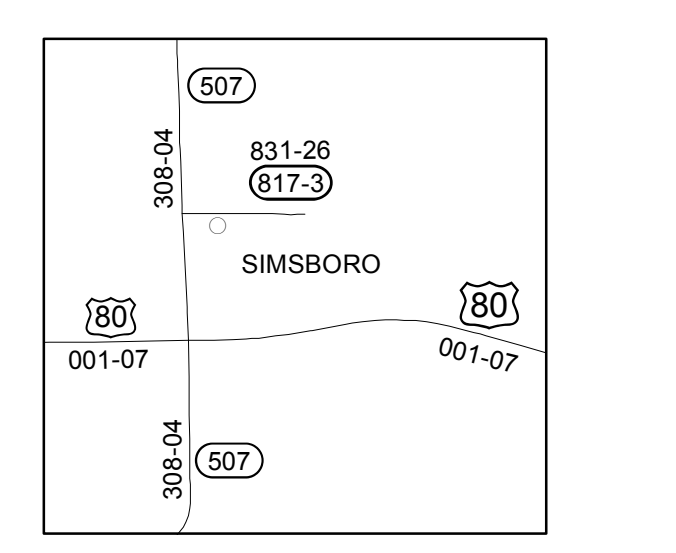
# ARKANSAS



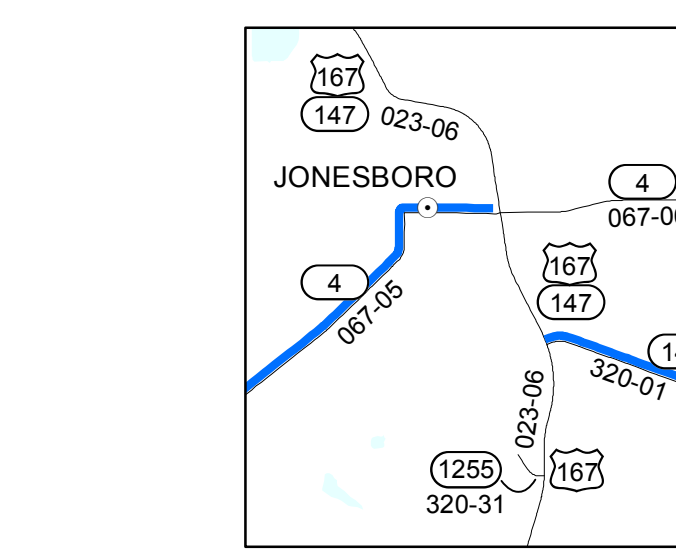
**SPEARSVILLE**



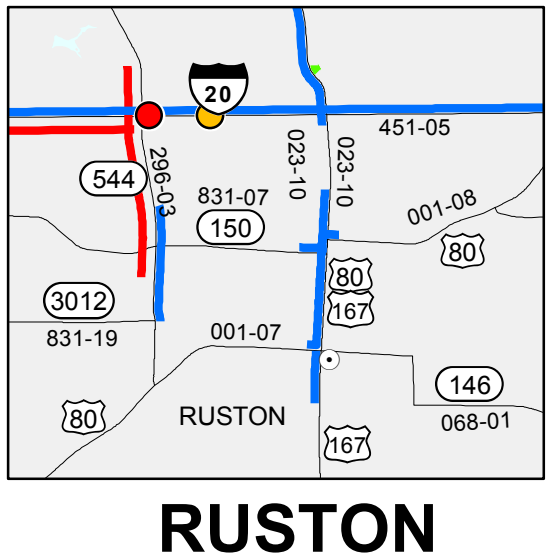
**DUBACH**



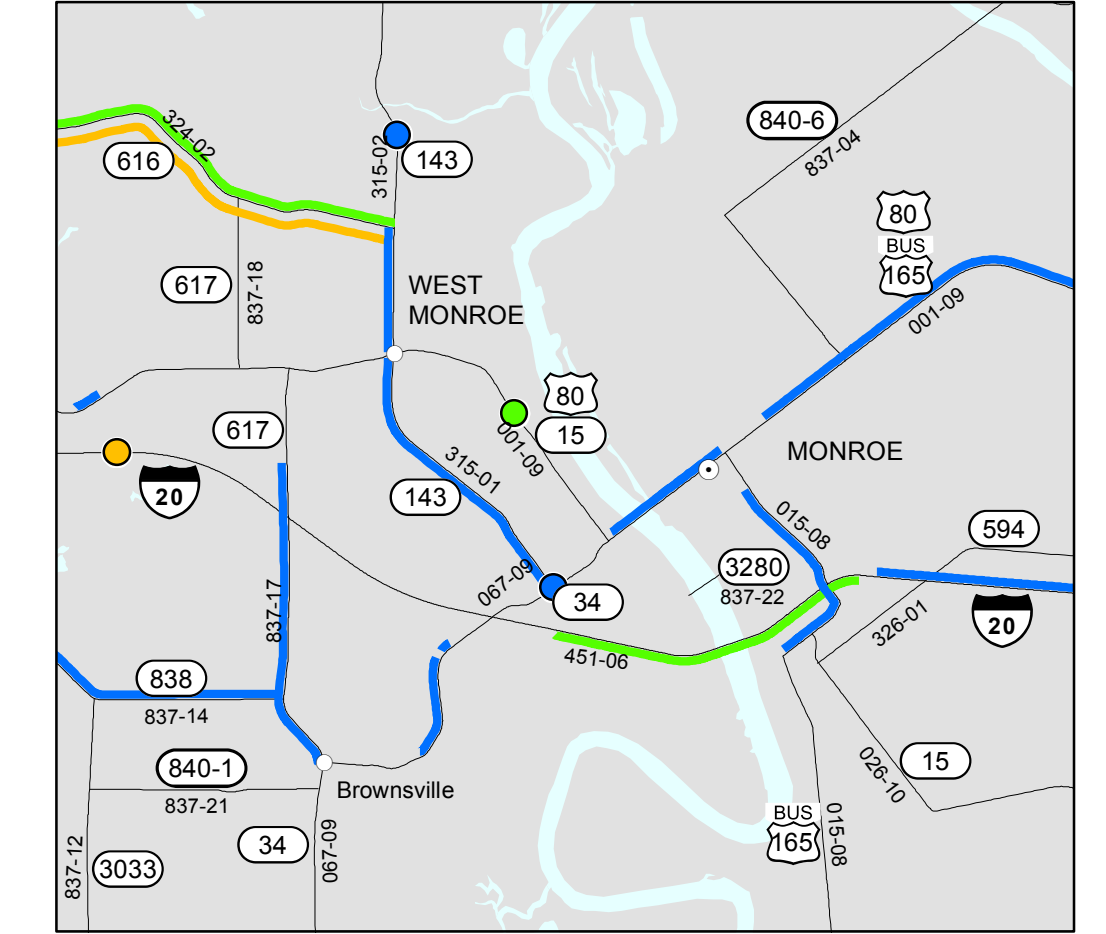
**SIMSBORO**



**JONESBORO**

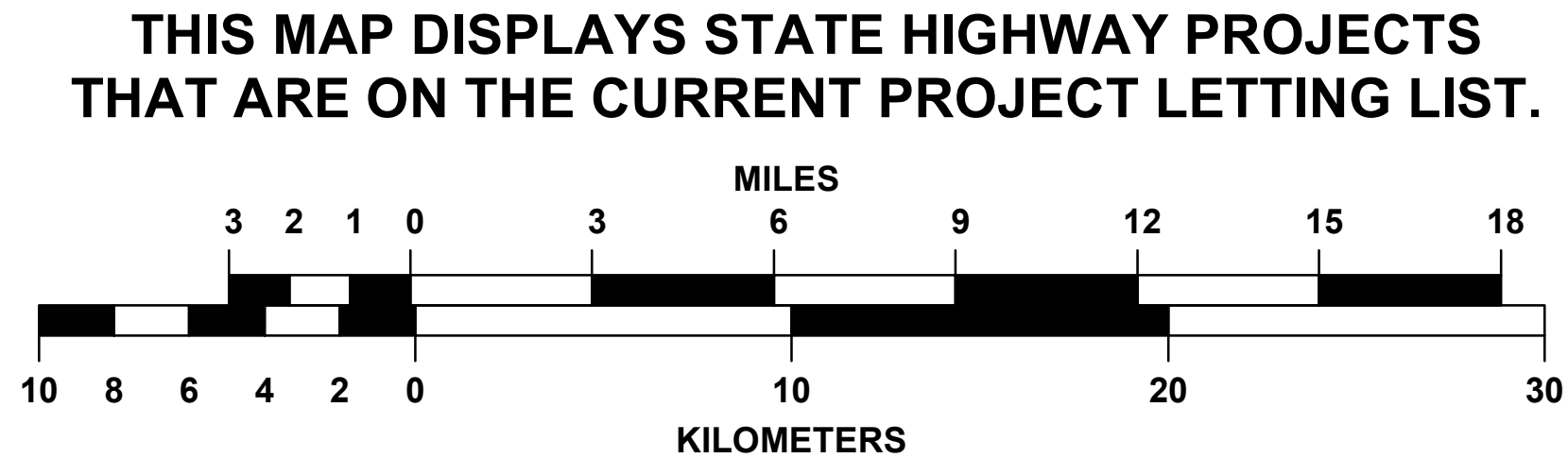
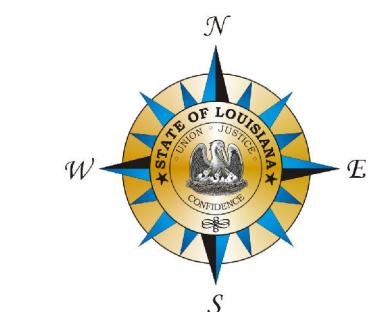


**RUSTON**



**MONROE**

- PARISH SEATS
- CITIES, TOWNS, AND COMMUNITIES
- STATE ROUTES
- PROJECTS LET BETWEEN JULY 2008 AND OCTOBER 2013
- PROJECTS LET BETWEEN NOVEMBER 2013 AND JUNE 2014
- PROJECTS SCHEDULED TO BE LET IN FY 14-15 (Next Fiscal Year)
- OTHER PROJECTS BEING DEVELOPED
- ▭ PARISH LINES
- ▭ WATER
- ▭ URBAN AREAS
- ▭ URBAN AREAS



MAP UPDATED OCTOBER 2013

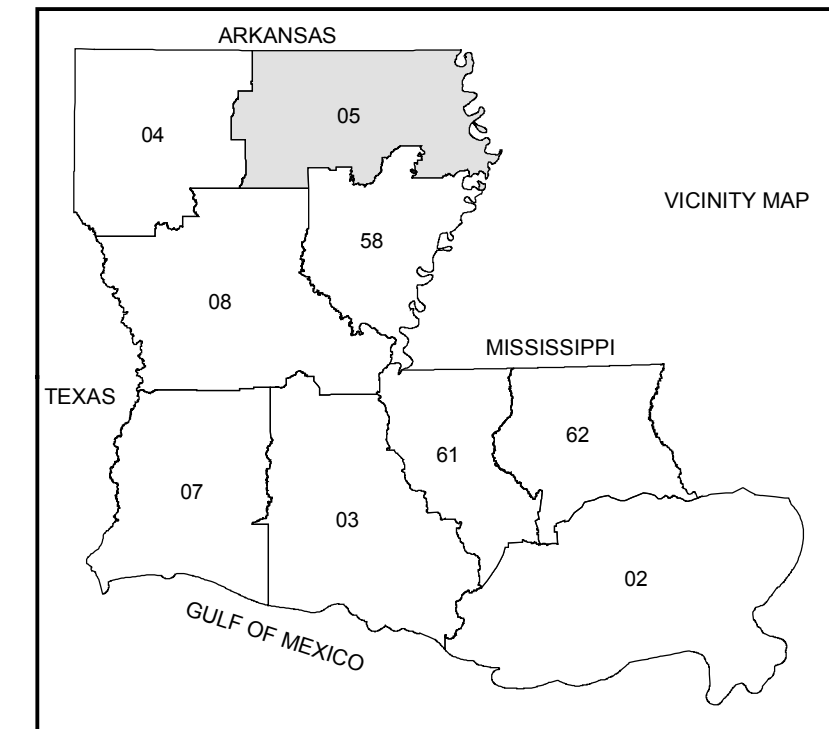
DISTRICT 05

THIS MAP HAS BEEN PREPARED BY THE LOUISIANA DEPARTMENT OF TRANSPORTATION AND DEVELOPMENT OFFICE OF MULTIMODAL PLANNING CARTOGRAPHY/ISS UNIT IN COOPERATION WITH THE U.S. DEPARTMENT OF TRANSPORTATION FEDERAL HIGHWAY ADMINISTRATION [www.dotd.louisiana.gov](http://www.dotd.louisiana.gov) - GIS/Maps Online

PRINTED COPIES OF THIS MAP ARE AVAILABLE FOR PUBLIC USE AT A NOMINAL COST. PLEASE SEE THE FOLLOWING CONTACT INFORMATION: DEPARTMENT OF TRANSPORTATION AND DEVELOPMENT GENERAL FILES - MAP SALES P.O. BOX 34245 BATON ROUGE, LA 70804-9245 (225) 378-1107

PROJECTION: NAD\_1983\_UTM\_Zone\_15N Transverse\_Mercator False\_Easting: 500000.000000 False\_Northing: 0.000000 Central\_Meridian: -93.000000 Scale\_Factor: 0.999600 Latitude\_Of\_Origin: 0.000000 HORIZONTAL DATUM: NORTH AMERICAN DATUM OF 1983

DATA ON THIS MAP IS INTENDED FOR INTERNAL PLANNING USE ONLY. ALTHOUGH THIS DATA HAS BEEN SUBJECTED TO MANY RIGOROUS TESTS - ALL WITH EXCELLENT RESULTS - NO WARRANTY, EXPRESSED OR IMPLIED, IS MADE AS TO THE ACCURACY OF THE DATA, NOR SHALL THE FACT OF DISTRIBUTION CONSTITUTE ANY SUCH WARRANTY. DOTD ASSUMES NO LIABILITY IN ANY CONNECTION THERE WITH, AND ASSUMES NO RESPONSIBILITY TO DISTRIBUTE FUTURE MODIFICATIONS OR CORRECTIONS THAT MAY BE MADE.



## SFY 2014 - 2015 HIGHWAY PRIORITY PROGRAM DISTRICT 05



THIS MAP DISPLAYS STATE HIGHWAY PROJECTS THAT ARE ON THE CURRENT PROJECT LETTING LIST.