

Louisiana Statewide Transportation Plan Update



Visioning Workshop

Baton Rouge, LA

November 14, 2012

**CDM
Smith**

Agenda

- Plan introduction
 - About the Plan
 - About initial interview, questionnaire, and survey results
- Exercise set up
- Break out sessions
- Working lunch
- More exercises
- Closing remarks

What we hope to accomplish

- Identify what growth and development makes sense for Louisiana
- Identify supporting transportation directions
- Identify goals and objectives most important to achieving the vision

What the Plan is about

- Goals/Vision
- Needs/finances/gap
- Investment scenarios
- Mega-projects
- Corridors
- Performance-based outcomes
- Analysis tools

Decision-making structure for the Plan

Policy Committee



Executive Advisory Council

- DOTD Executives
- Advisory Council Chairs



Advisory Councils

- Aviation
- Freight Rail
- Intermodal
- State Highway Operations & Maintenance
- Ports & Waterways
- Regional Planning Officials
- Community Development & Enhancement
- Trucking

Louisiana State Highway System

- 16,687 State centerline miles – 27% of all roads in Louisiana
- 11th largest state system
- ~80% rural
- ~2/3 on low volume roads
- 7,963 State bridges – 60% of all bridges

State interest – other modes (roles)

- Surface passenger
 - Urban transit
 - Rural transit
 - Passenger rail
 - Bicycle/pedestrian
- Freight rail
- Aviation
- Water ports/waterways

DOTD interviews – *issues identified*

- Heavier trucks, more traffic
- DOTD focus on preservation
- Public expectations are high, public support for more funding is low
- “Soft” issues becoming important (quality of life, access to education)
- Aging population
- Economic development focus
- Impact of hurricanes

DOTD interviews - *what must change?*

- Add capacity to key facilities
- Modal shift expectations
- Emphasize growth management
- Connections
- Intergovernmental cooperation
- New funding sources

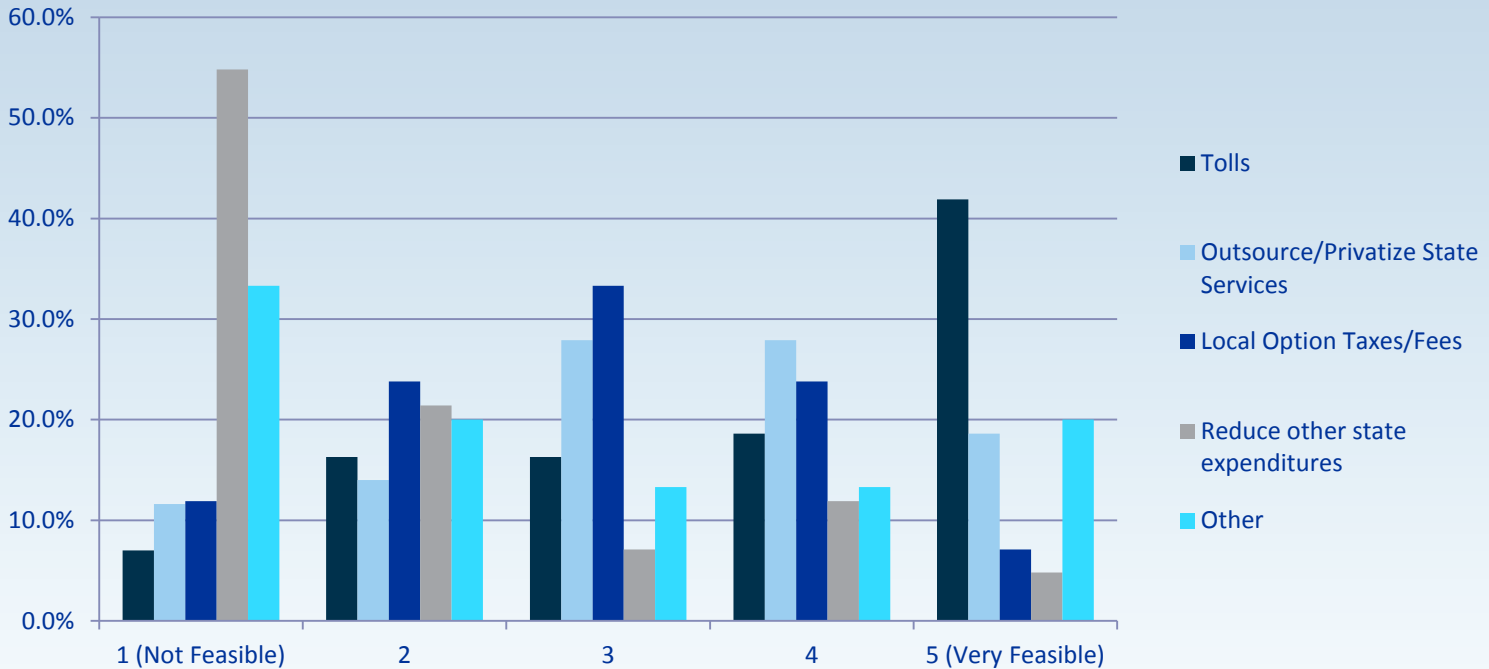
DOTD interviews - *Top transportation priorities?*

- Bridge condition
- Bottlenecks
- Transportation and the economy
- DOTD strategic goals
- Other modes – transit, rail
- Achievable projects
- Asset management
- Corridor focus

Legislative Questionnaire

- Web-based survey
- Respondents - 48
- Questions – 10 (choice and free)
- Quotable remark – *“Making all of this work together. Everyone needs infrastructure. No one place can do it alone nor can the state only serve one area at a time. This is the only way we tie our areas together. It is our responsibility to make legislators, DOTD, and citizens care!!!!!!!!!!”*

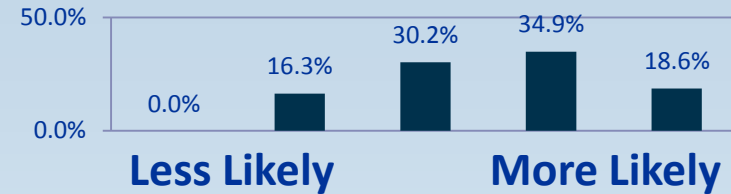
Legislative Questionnaire – *What's feasible to increase funding ?*



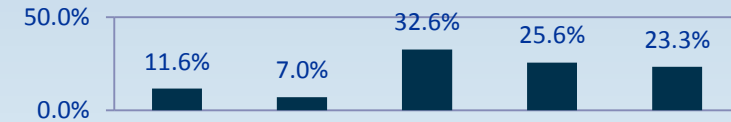
Majority of Legislators think tolls approved by local voters are *Very Feasible* and reducing other state expenditures is *Not Feasible*.

Questionnaire – *What's the likelihood of...*

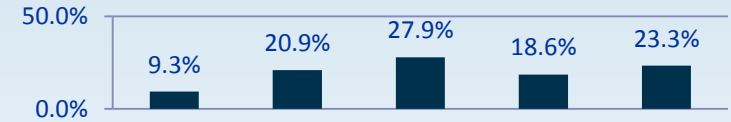
Continued suburban development



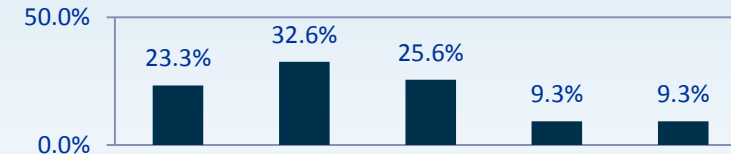
Reduction in federal transportation funds.



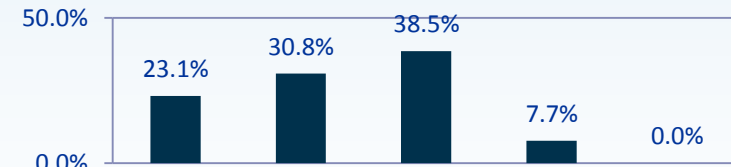
Reduced state fuel tax revenues due to increased gas prices, increased fuel efficiency, alternative fuels.



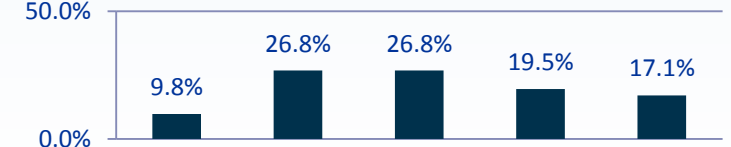
Reduced travel demand due to telecommuting, compressed work weeks, internet shopping, etc.



Rural population shift to urban/suburban areas

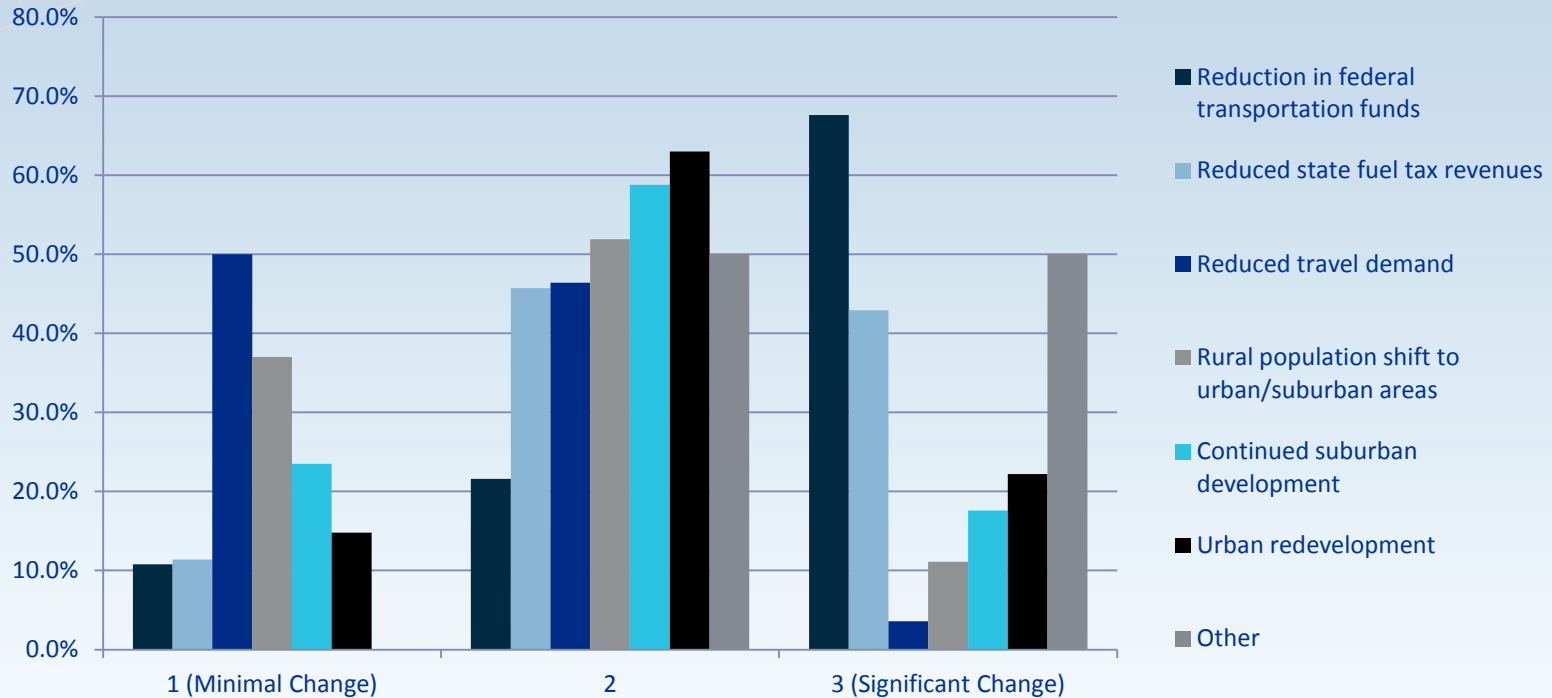


Urban redevelopment



Questionnaire –

What will affect needs/investments?



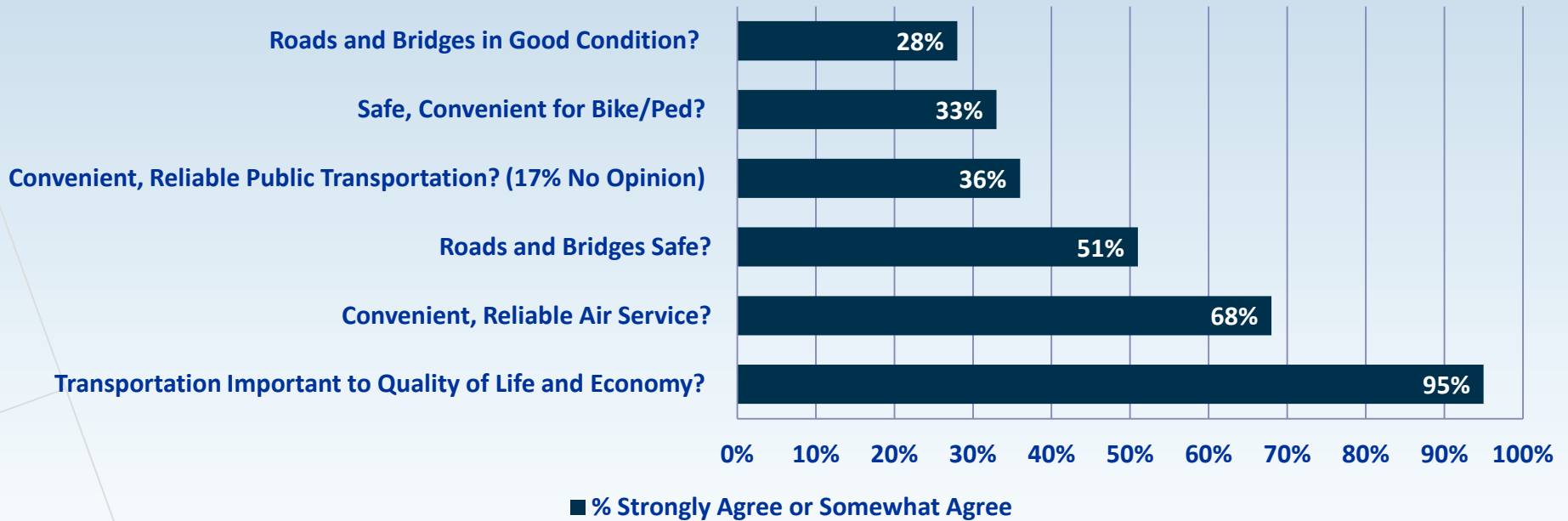
Majority of Legislators believe a reduction in federal transportation funds will *Significantly Change* transportation needs/investments.

Majority of Legislators believe reduced travel demand will have a *Minimal Change* on transportation needs/investments.

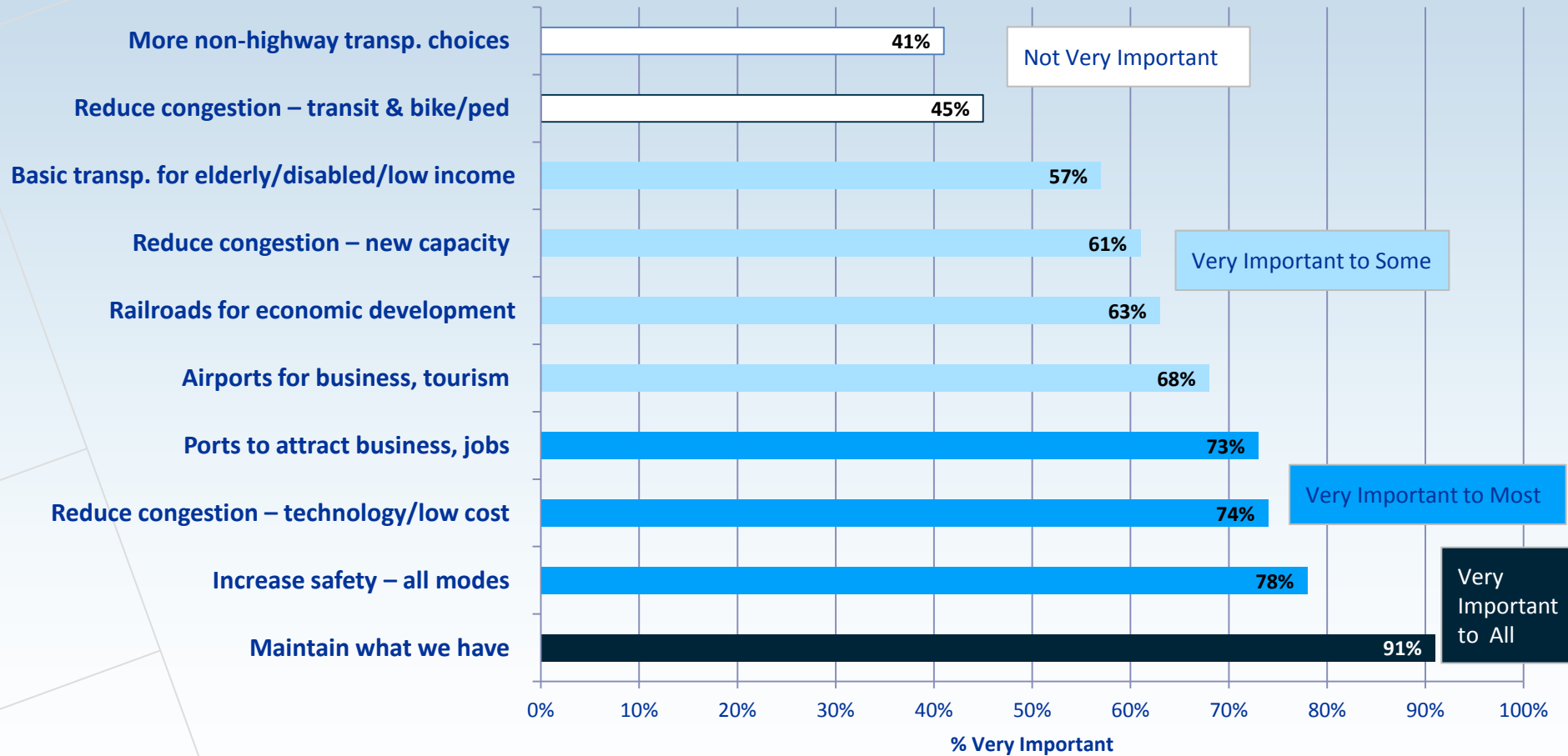
Public Survey:

- Random telephone survey
- Respondents – 1,013
- Questions – 30 (mostly choice but some free) (also questions about respondents)
- Geography
 - North Louisiana - Metro Parishes 16%
 - North Louisiana - Non-Metro Parishes 11%
 - South Louisiana - Metro Parishes 58%
 - South Louisiana - Non-Metro Parishes 15%

Public Survey – *Broad impressions (Questions 1-7)*

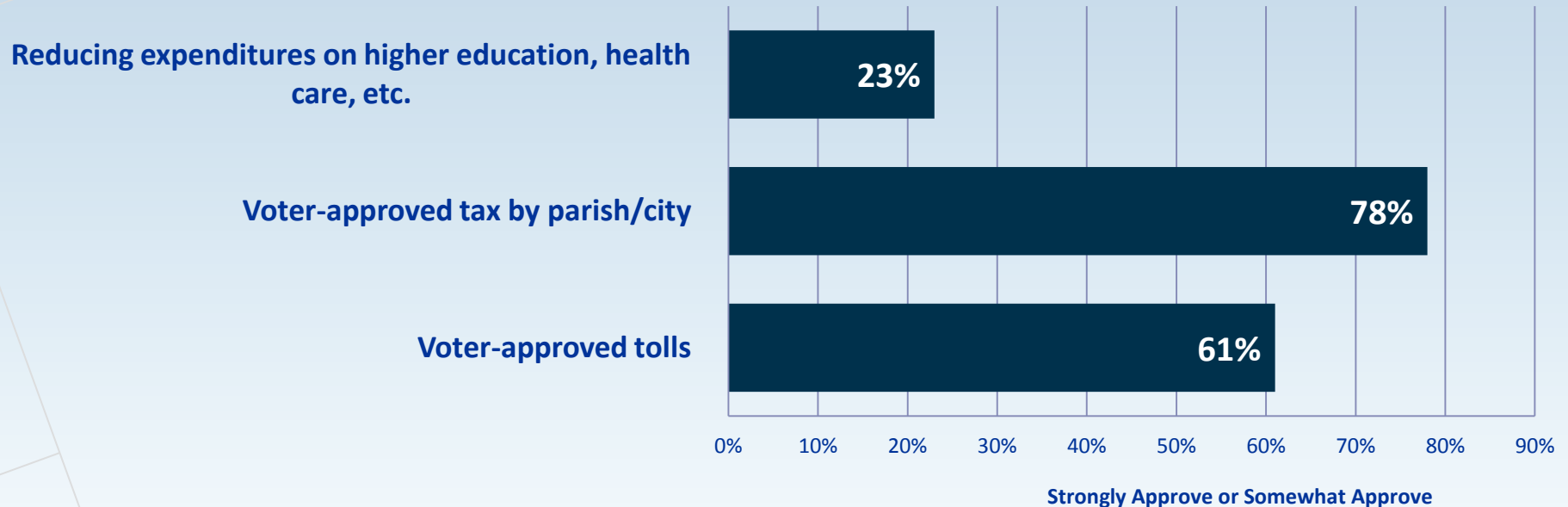


Public Survey – *Where to spend tax \$ (Questions 8-17)*



Public Survey –

If tax revenues aren't sufficient (Questions 18-21)

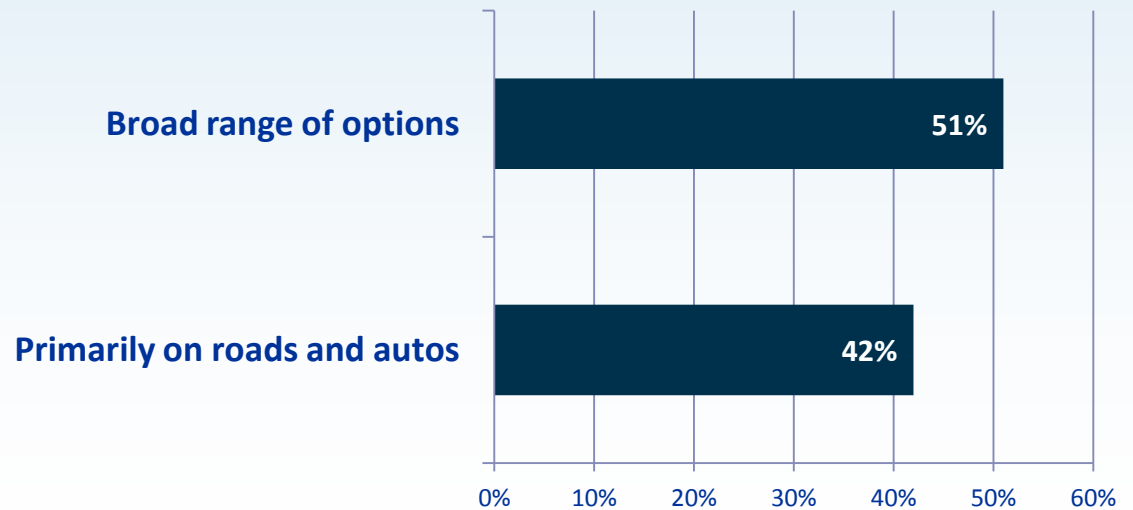
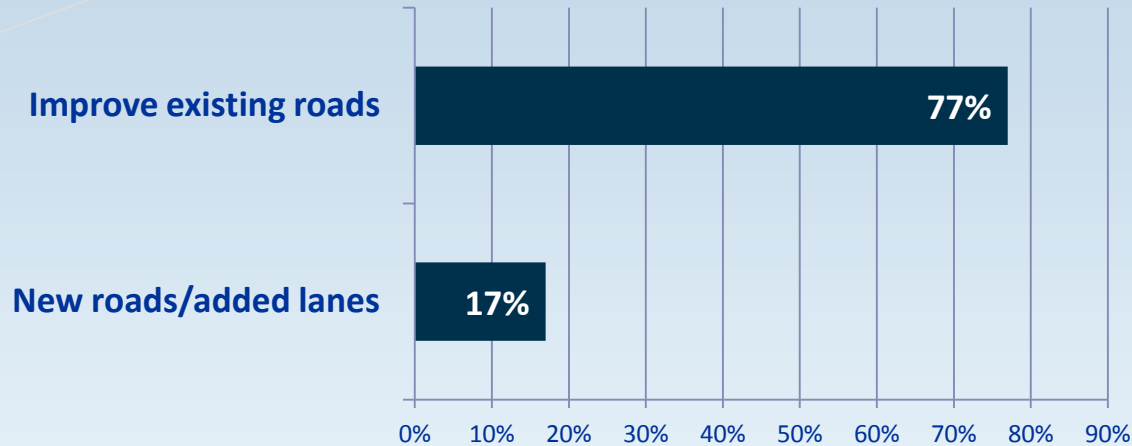


Opened ended question on how to pay for projects:

- #1 response – no opinion (51%)
- #2 response – more effective spending (18%)
- #3 response – some sort of taxes/fees (14%)

Public Survey –

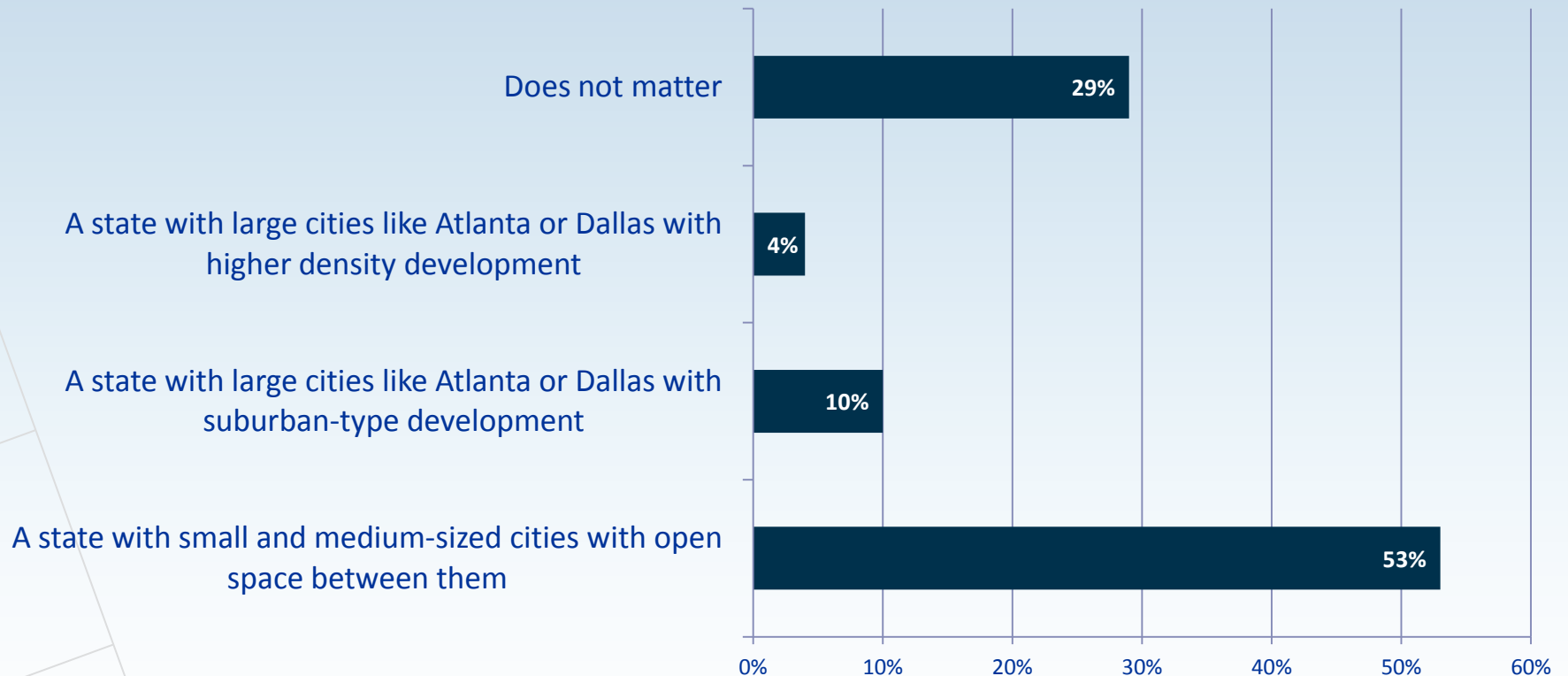
What should be the priority (Questions 22-23)



Public Survey – *Views on airports (Questions 24-28)*



Public Survey – *Preference for Future (Question 29)*



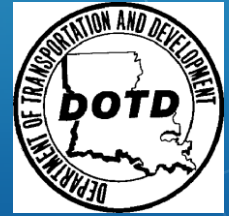
Today's Workshop

- **Purpose:** set the direction of the Plan by identifying where Louisiana wants to be in the future with regard to transportation
- **Plan elements shaped by workshop input:**
 - Vision
 - Policies, goals and objectives

Thank You!

**Any questions before
we set up Exercise 1**

Louisiana Statewide Transportation Plan Update



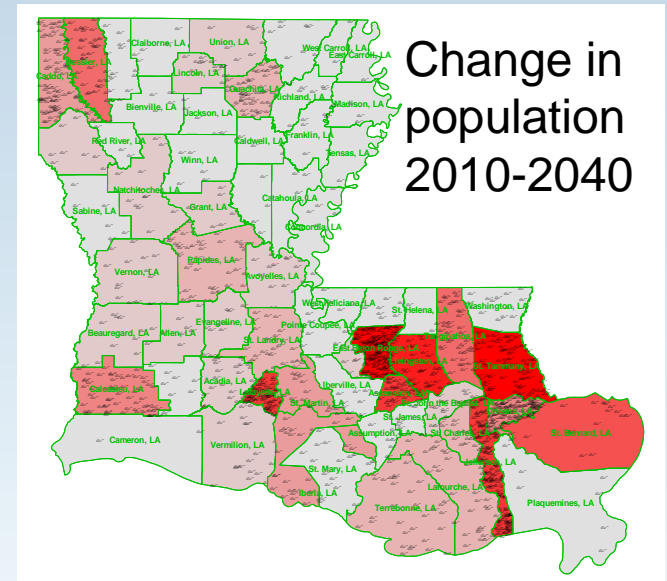
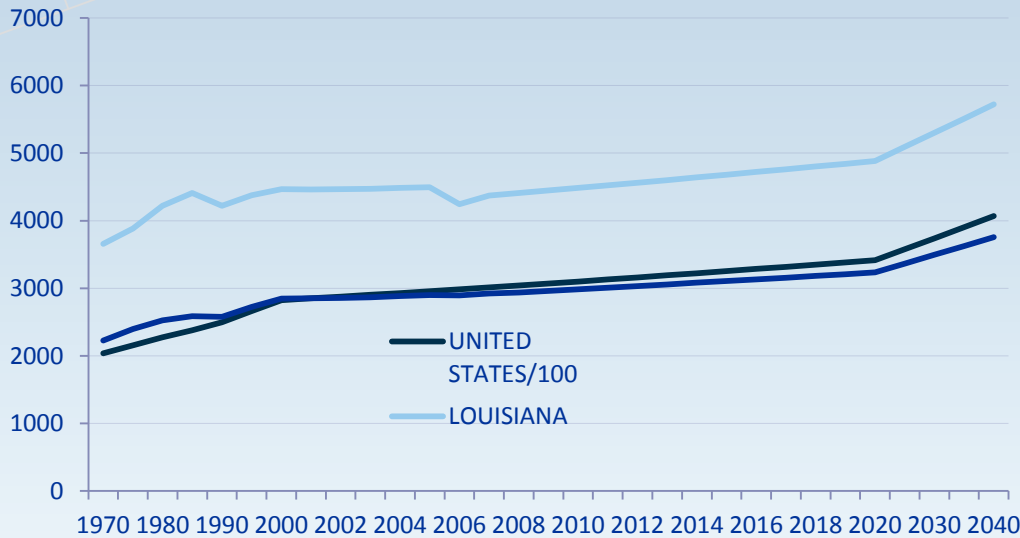
Land Use Scenarios

Baton Rouge, LA

November 14, 2012

**CDM
Smith**

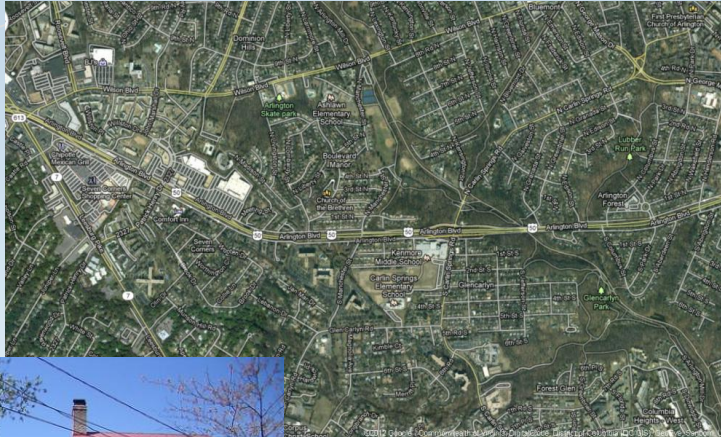
Exercise 1- Background



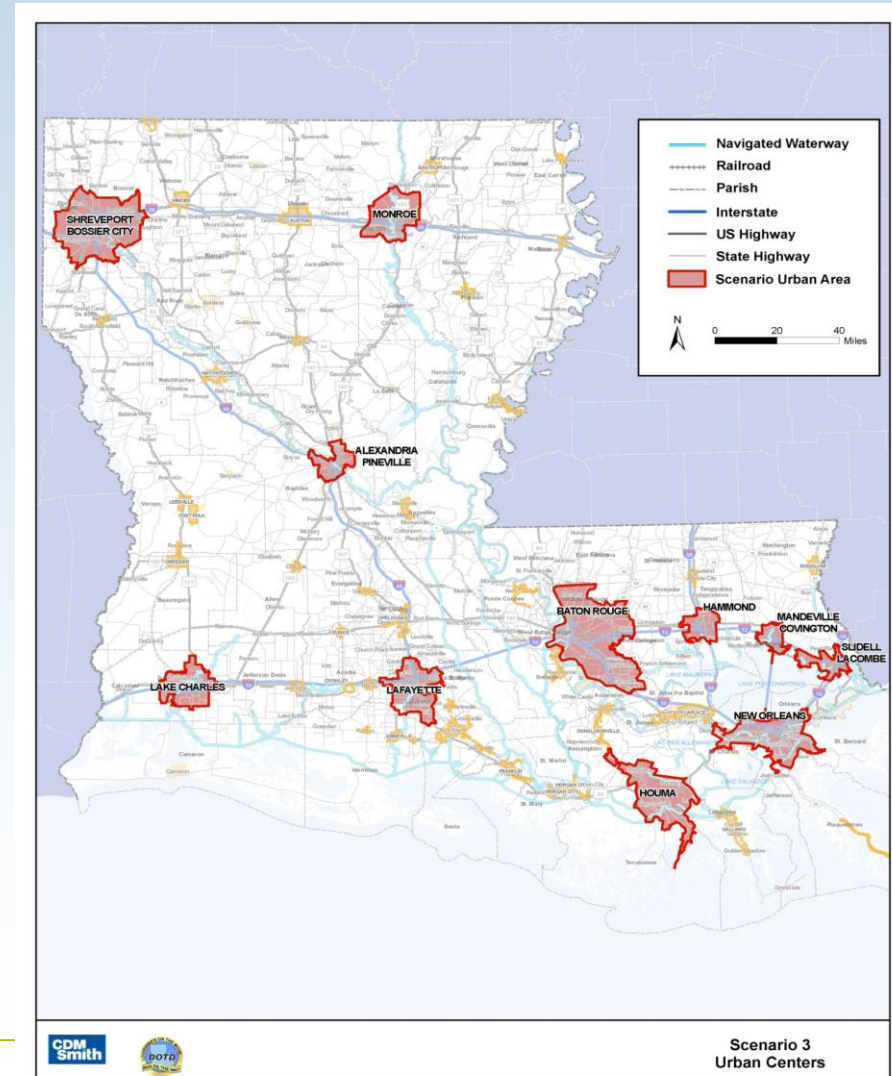
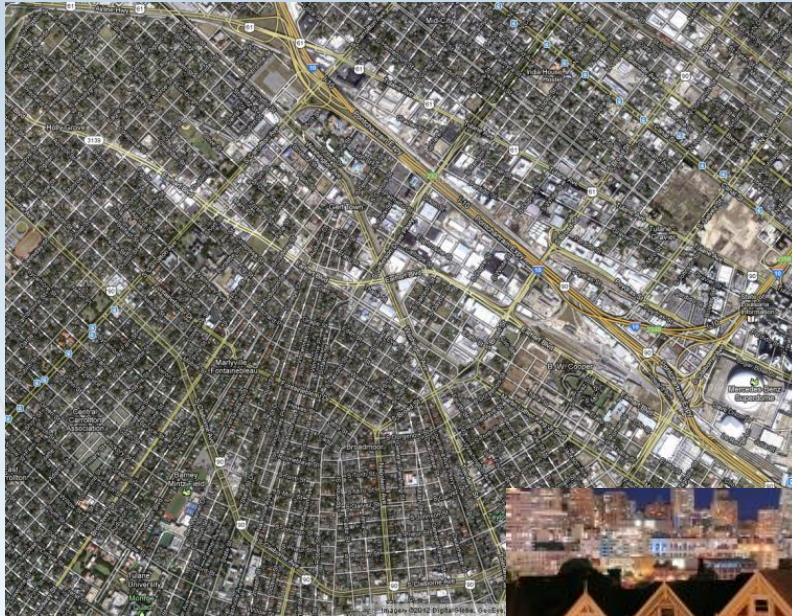
(Darker color and more dots = more people)

- Demographic forecast estimates growth from 4.5M to 5.7M persons between 2010 and 2040
- How might will Louisiana grow?

Town Centers- Development focused in centers of urban areas (10k +)

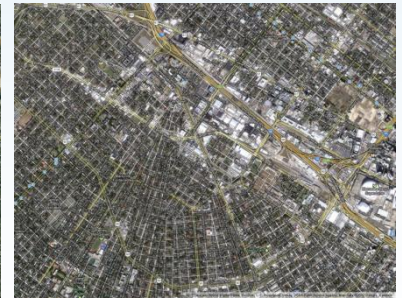
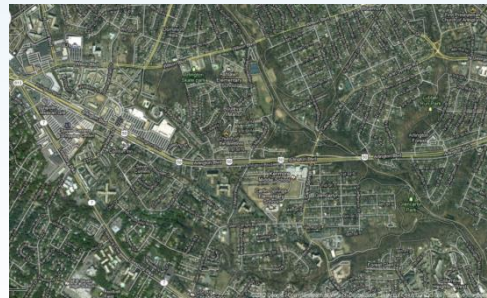
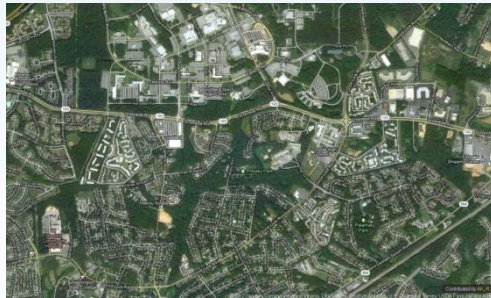


Urban Centers- Development focused in centers of urbanized areas (50k +)

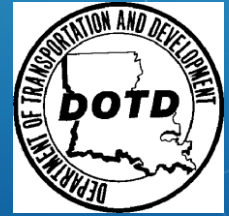


Scenario Summary

	1- Status Quo	2- Town Centers	3- Urban Centers
Development Type	More suburban development in many areas	More development within centers of areas (10K +)	Most development within largest urbanized areas (50K+)
Urban Boundary	Expands outward	Stays the same	Could decrease
Population Density	Lower density, overall	Increases slightly, overall	Increases more



Louisiana Statewide Transportation Plan Update



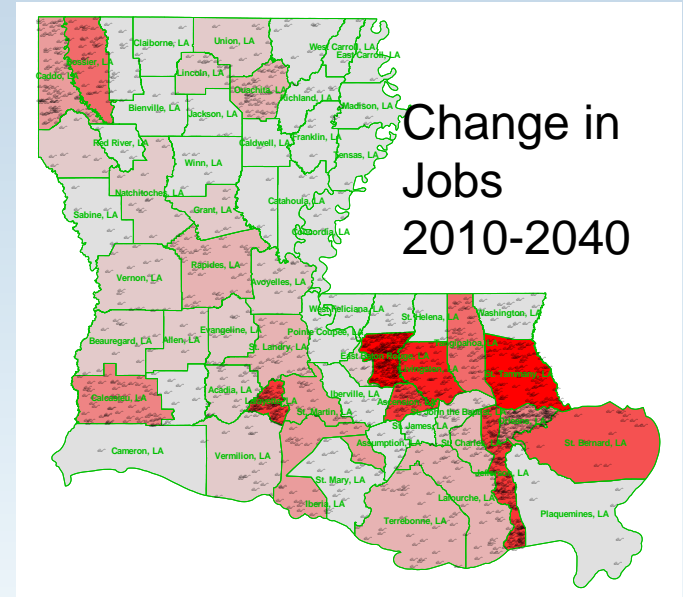
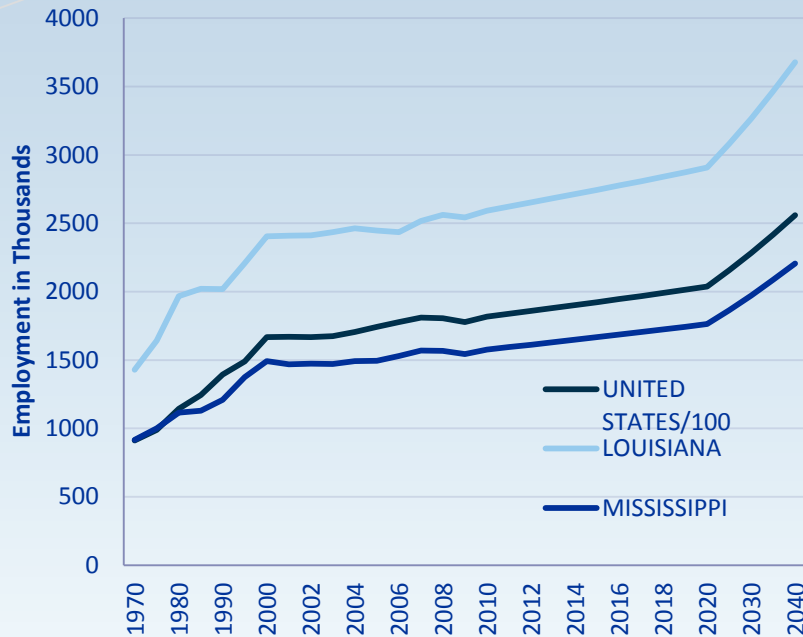
Economic Development Scenarios

Baton Rouge, LA

November 14, 2012

**CDM
Smith**

Exercise 1- Background

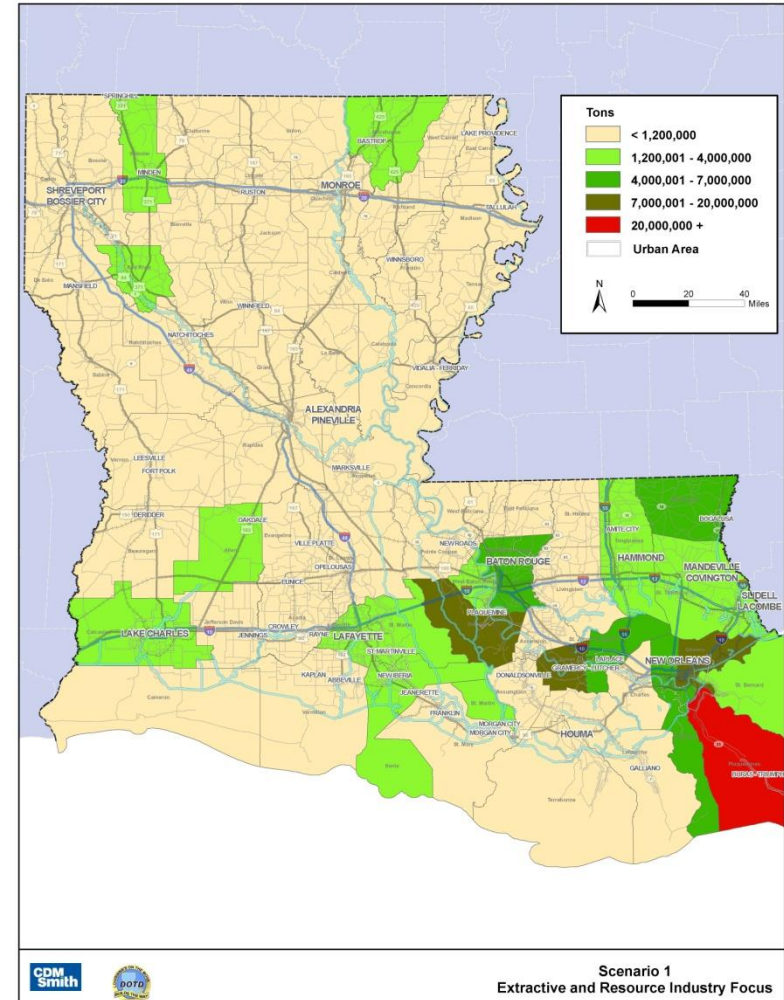


(Darker color and more dots = more jobs)

- Economic forecast estimates growth from 2.6M to 3.7M jobs between 2010 and 2040
- How might Louisiana grow?

Extractive and Resource Industry Focus

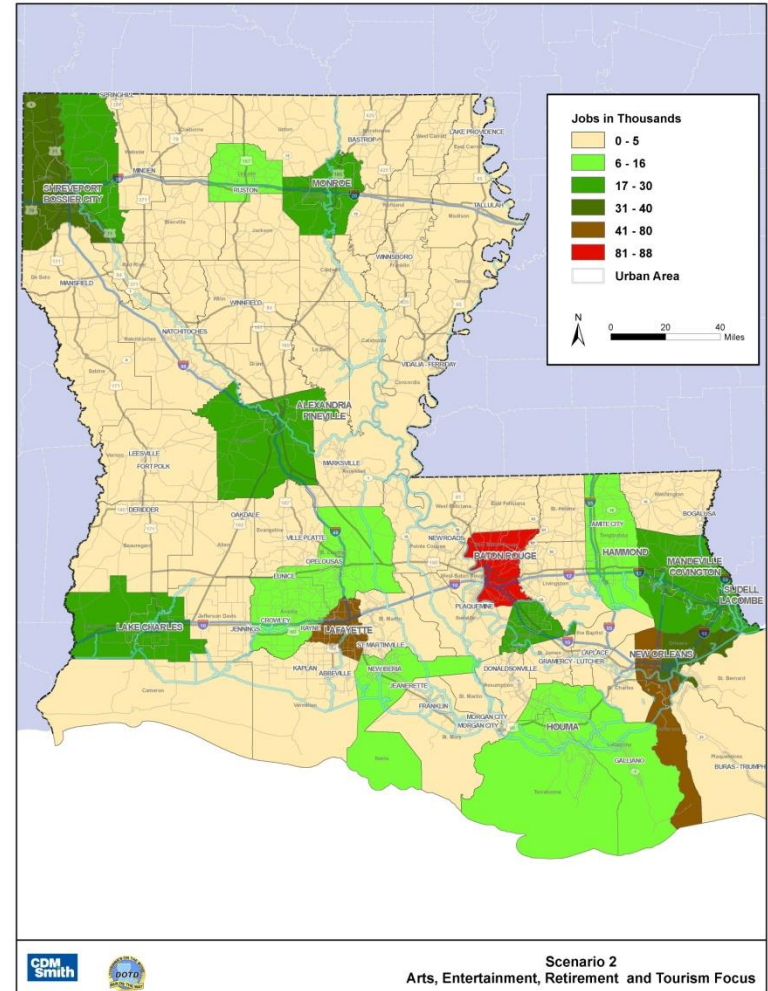
Commodity Shipments, Oil, Agriculture, Mining, etc. 2040



Arts, Entertainment, Retirement, and Tourism Focus

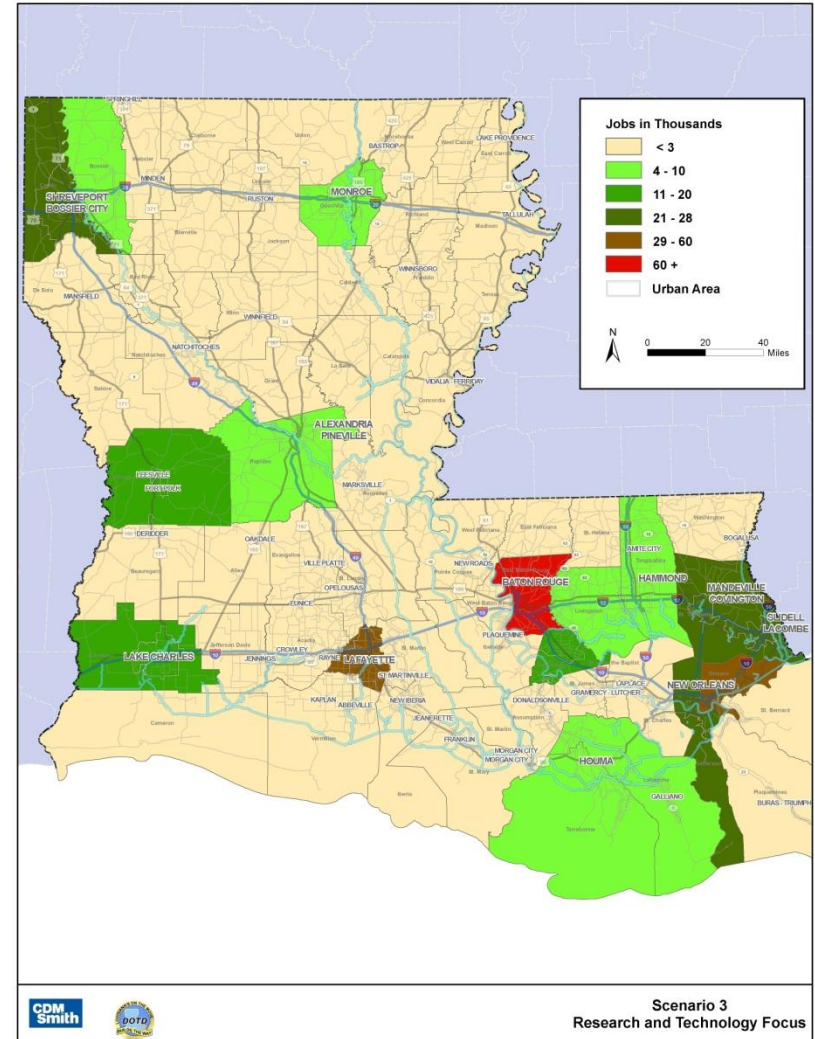


Arts, Entertainment, Health Jobs 2040



Research and Technology Focus

Tech Jobs 2040



Scenario Summary

	1- Extractive and Resource Industry Focus	2- Arts, Entertainment, Retirement and Tourism Focus	3- Research and Technology Focus
Description	Oil, gas, agriculture development	Festivals, amenities for seniors, new tourism attractions	University-research, hi-tech, coastal management
Relationship to Population Centers	Mostly separated	Mostly integrated	Mix of integrated and separated
Employment Density	Lower density, overall	Increases slightly, overall	Increases more

