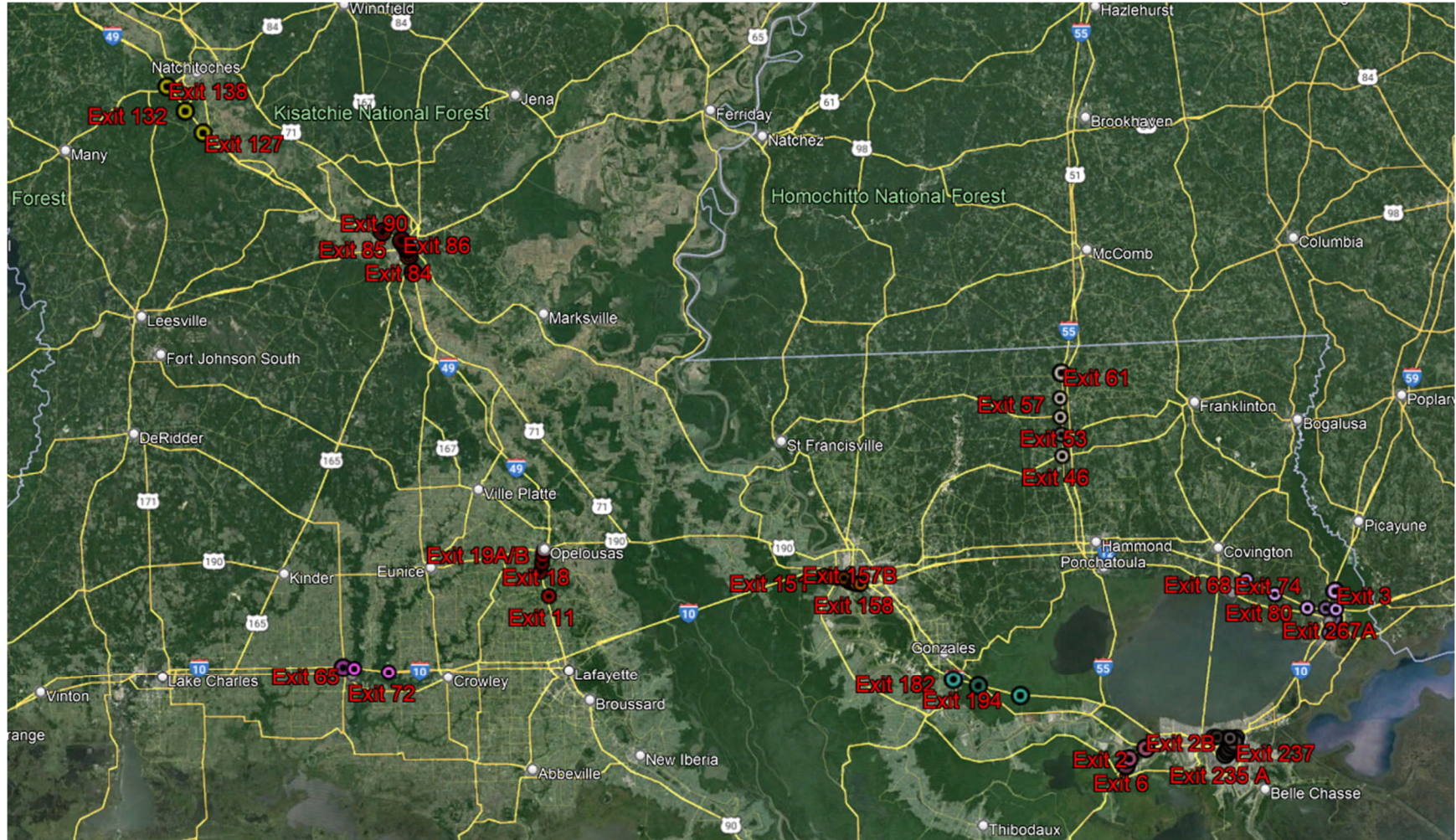


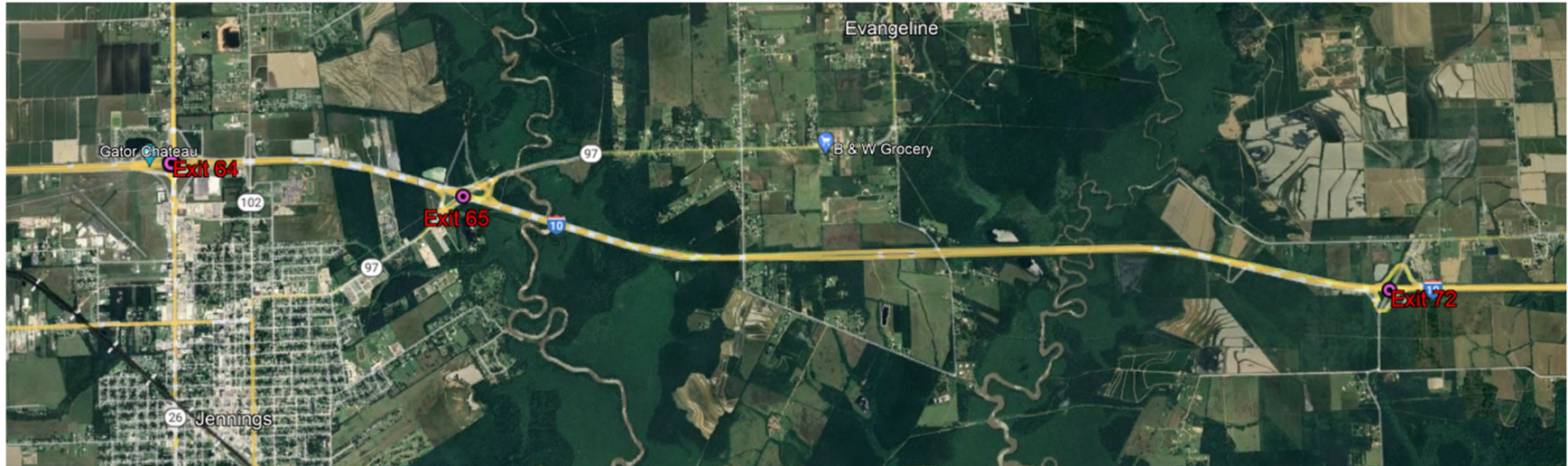
Attachment 2 – Louisiana NEVI Interchange Corridor Groups – Round 1

(Corridor groups were derived for maximum efficiency, to maintain proper spacing, in order to achieve fully built-out status within 2 rounds)



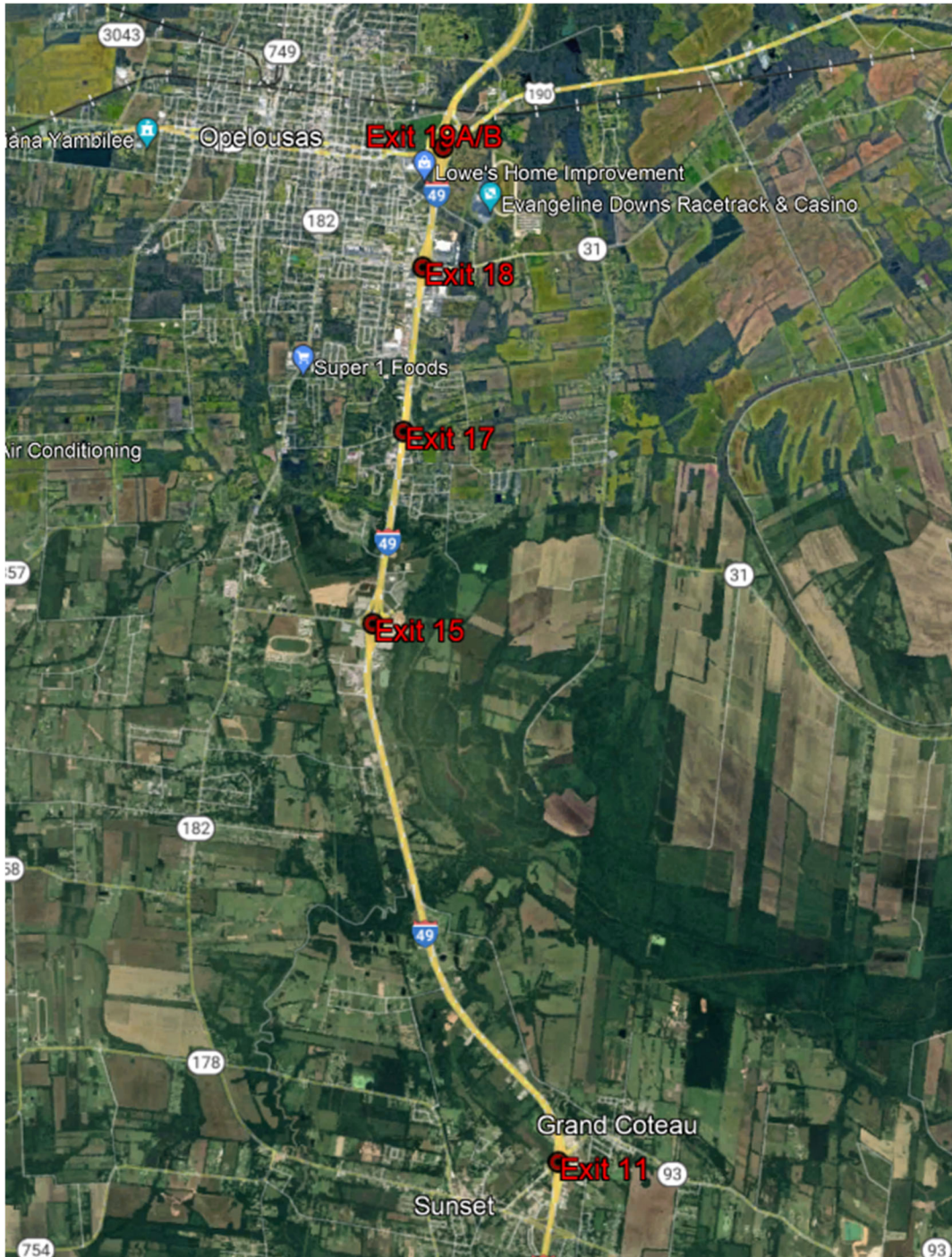
Group H – I-10

- Exit 64 – LA 26
- Exit 65 – LA 97
- Exit 72 – Trumps Rd.



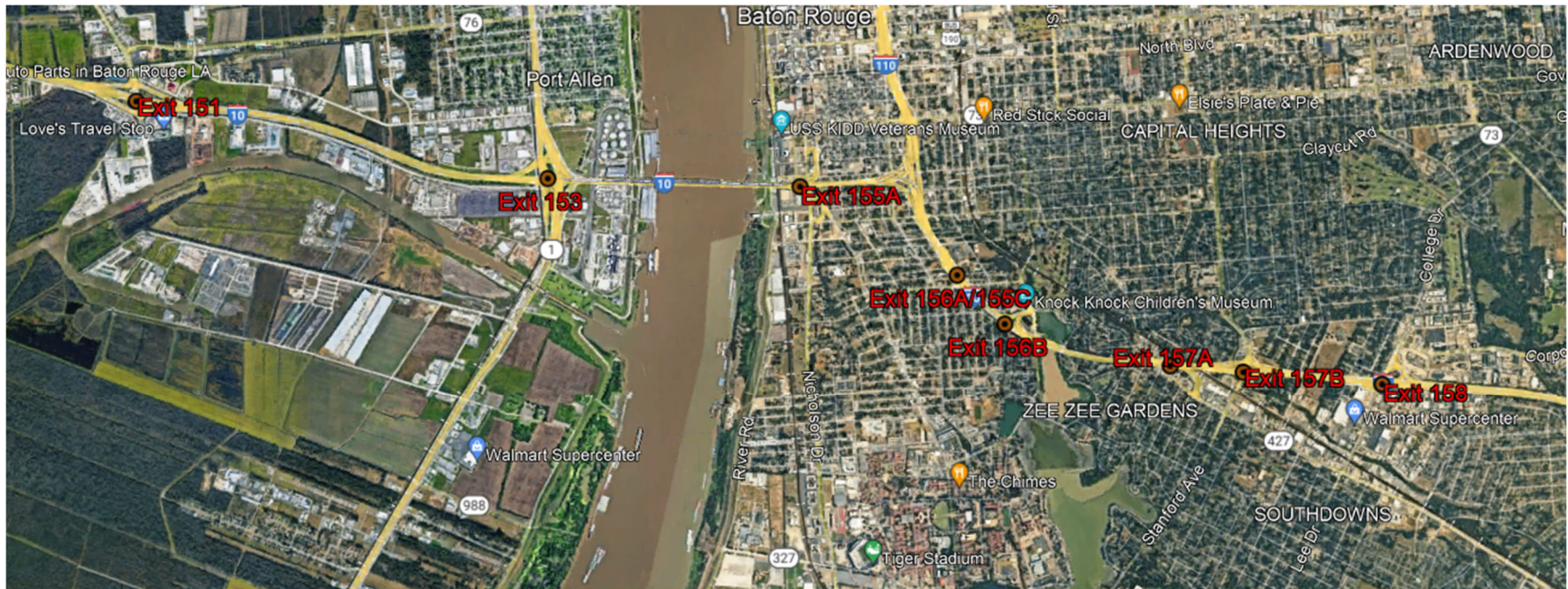
Group I – I-49

- Exit 11 – LA 93
- Exit 15 – LA 3233
- Exit 17 – Judson Walsh
- Exit 18 – LA 31
- Exit 19 A/B – US 190



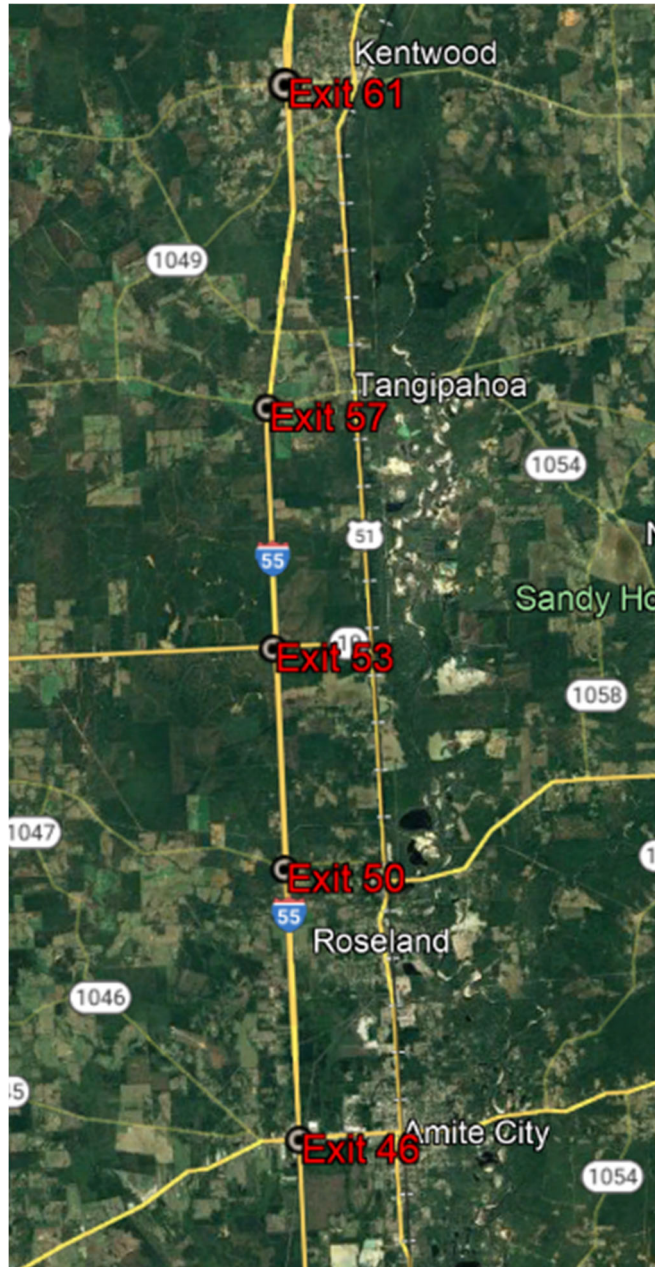
Group K – I-10

- Exit 151 – LA 415
- Exit 153 – LA 1
- Exit 155A – Nicholson Dr.
- Exit 156A/155C – Lorri Burgess Ave.
- Exit 156B – Dalrymple Dr.
- Exit 157A – S. Acadian Thruway
- Exit 158 – College Drive



Group L – I-55

- Exit 46 – LA 16
- Exit 50 – LA 1048
- Exit 53 – 10
- Exit 57 – LA 440
- Exit 61 – LA 38



Group M

I-10

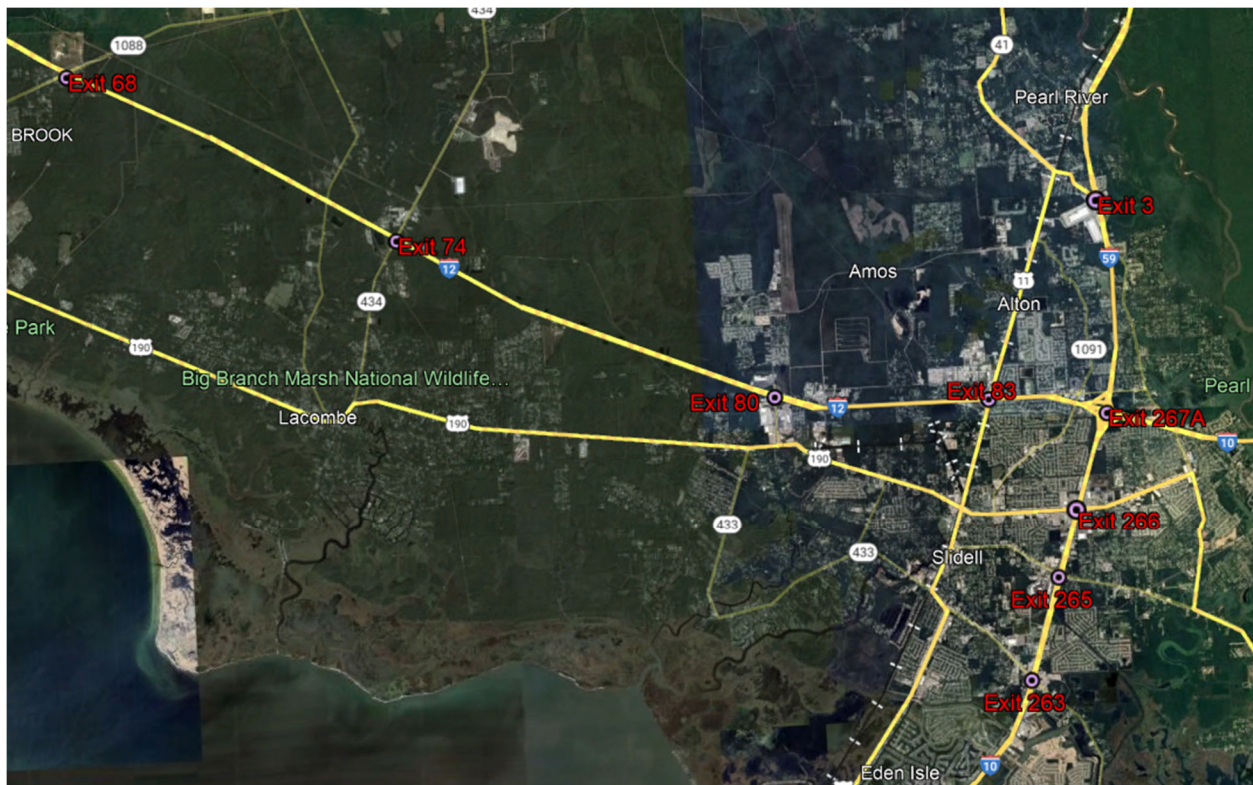
- Exit 267A – I-12
- Exit 266 – US 190
- Exit 265 – US 190 Bus.
- Exit 263 – LA 433

I-12

- Exit 68 – LA 1088
- Exit 74 – LA 434
- Exit 80 – Northshore Blvd.
- Exit 83 – US 11

I-59

- Exit 3 – LA 1090



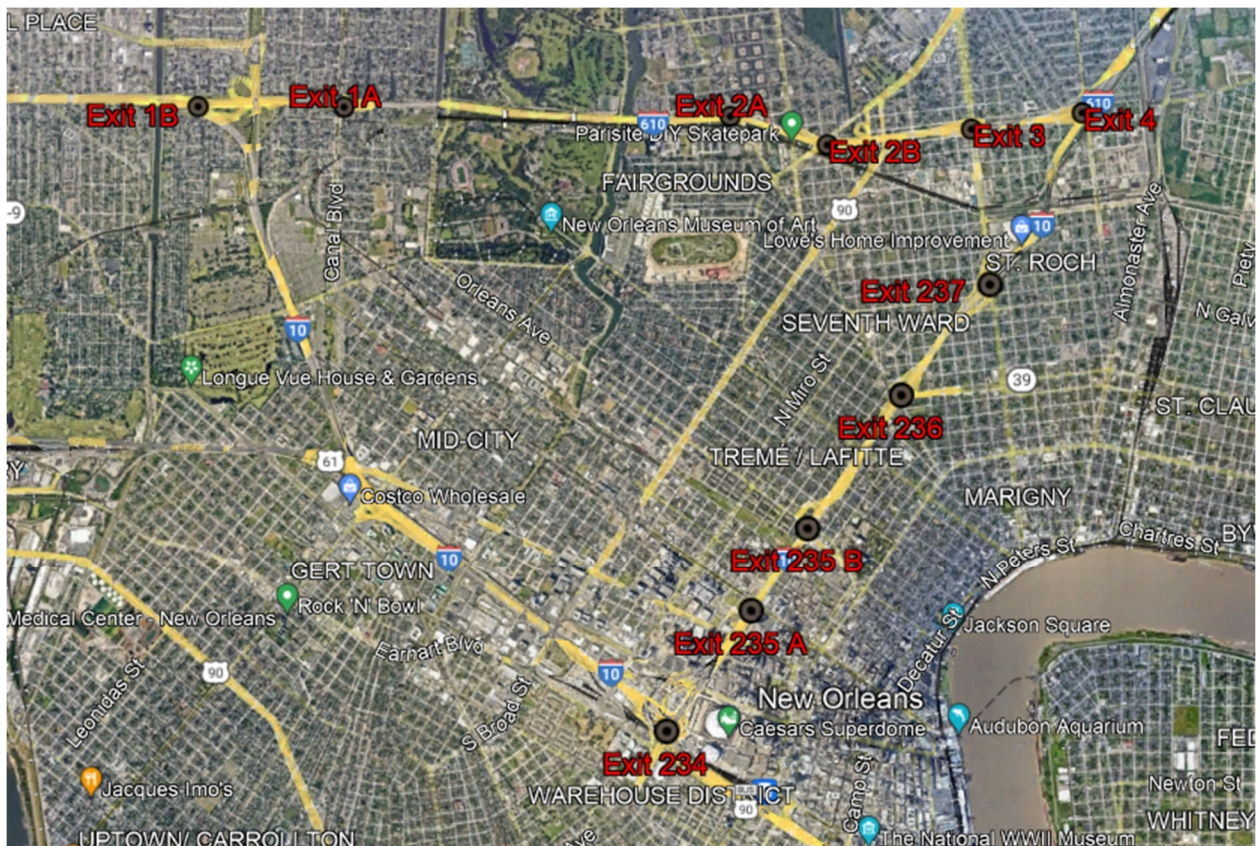
Group N

I-10

- Exit 234 – US 90 Bus.
- Exit 235A – Canal St.
- Exit 235B – Orleans Ave.
- Exit 236 – St. Bernard Ave.
- Exit 237 – Elysian Fields Ave.

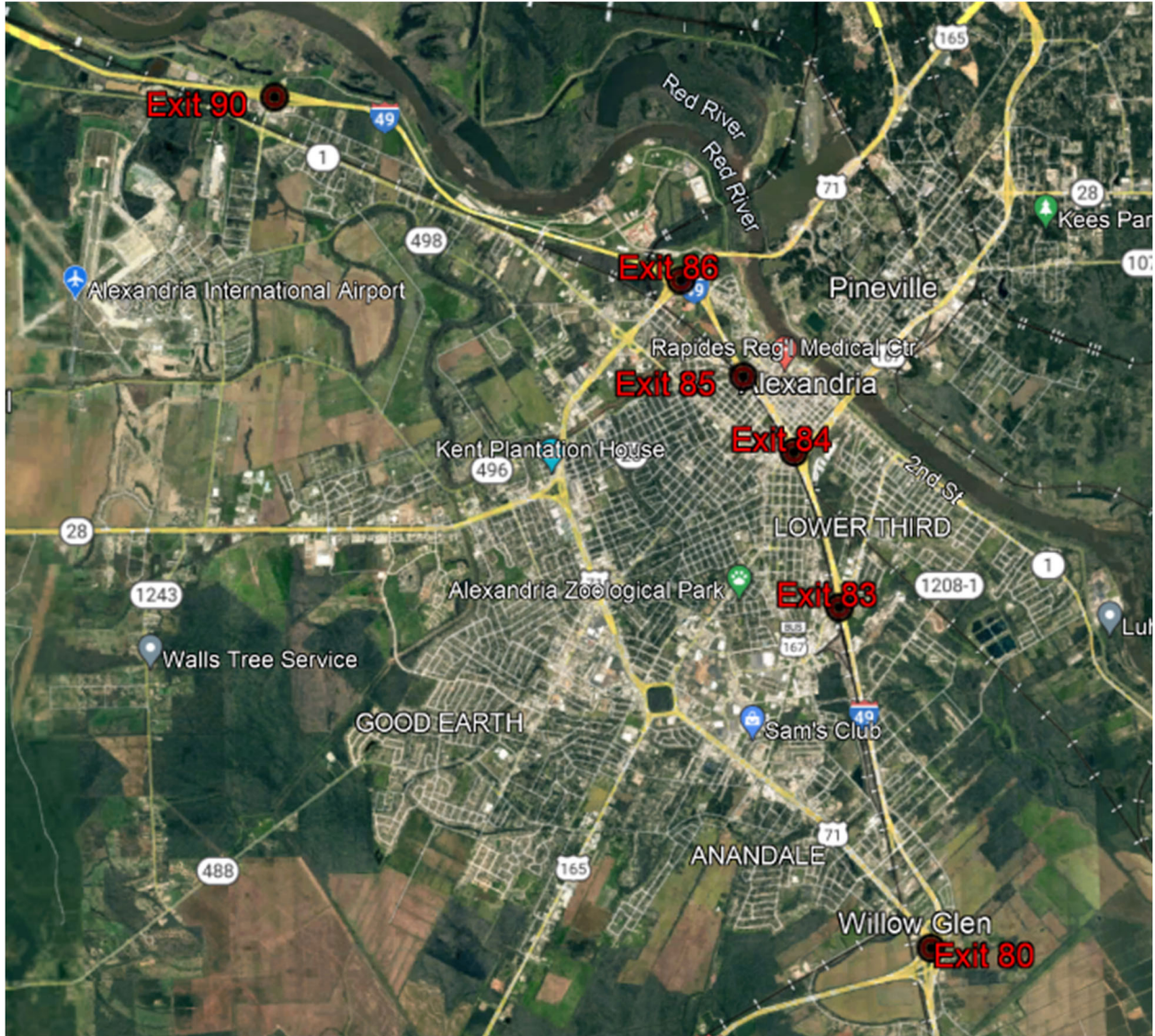
I-610

- Exit 1A – I-10 (West)
- Exit 1B – Canal Blvd
- Exit 2A – St. Bernard Ave.
- Exit 2B – US 90
- Exit 3 – Elysian Fields Ave
- Exit 4 – I-10 (East)



Group Q – I-49

- Exit 80 – US 71(South)
- Exit 83 – Broadway Ave.
- Exit 84 – US 167
- Exit 85 – Rapides Ave.
- Exit 86 – US 71(North)
- Exit 90 – LA 498



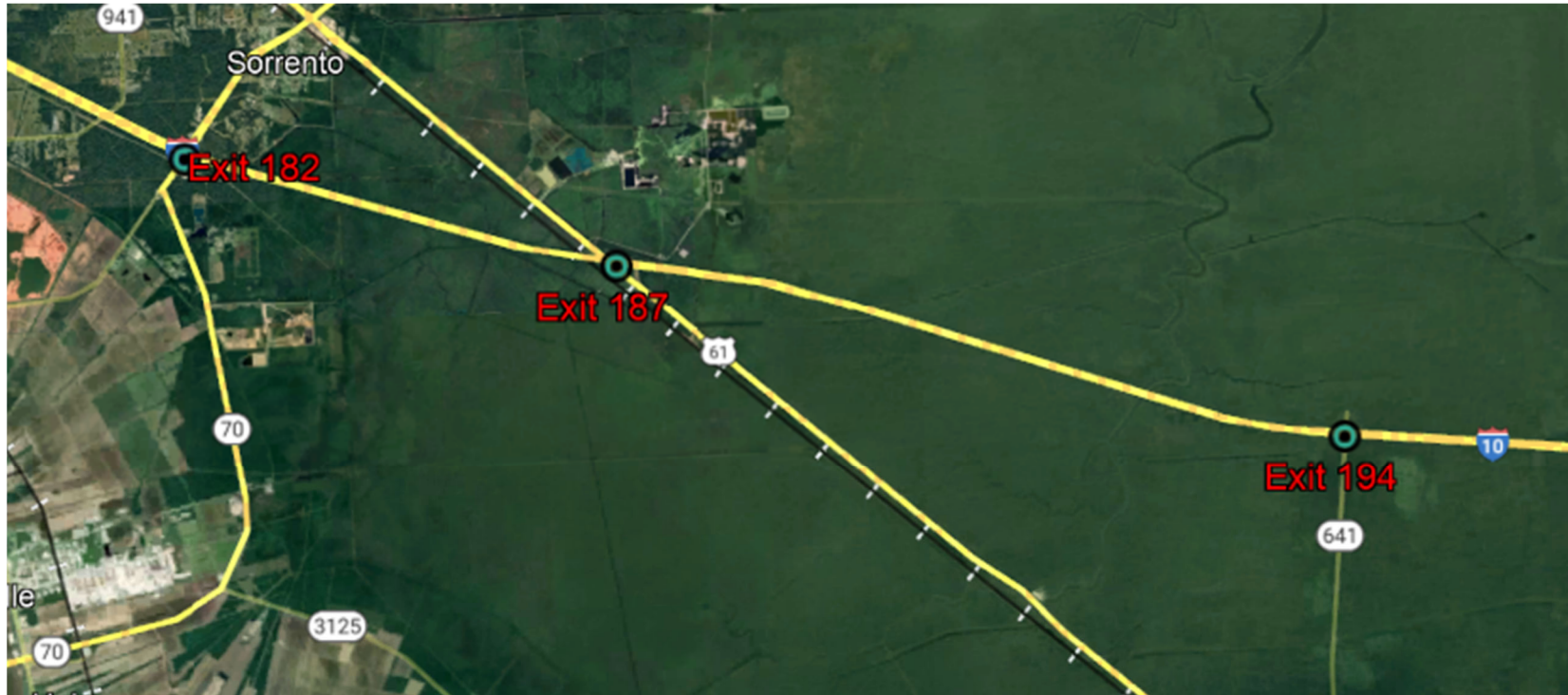
Group R – I-49

- Exit 127 – LA 120
- Exit 132 – LA 478
- Exit 138 – LA 6



Group T – I-10

- Exit 182 – LA 70
- Exit 187 – US 61
- Exit 194 – LA 641



Group U – I-310

- Exit 2 – US 61
- Exit 6 – LA 48
- Exit 7 – LA 18

